

Historic Architectural Review Commission

Staff Report Item 4

Meeting Date:	June 24, 2014
Applicant:	One Call Construction, Agent
Application Number:	H14-01-0779
Address:	#313 Duval Street
Description of Work:	Installation of three poles 11 feet tall for light strings and fans.
Building/Site Facts:	The main house on the site is listed as a contributing resource. The two and a half stories Queen Ann revival was built circa 1890. Known as Robert Curry and the Elks Club the house has been used in the last decade as a restaurant. The house is one of its kind.
Guidelines Cited in Review:	Exterior lighting (page 50), specifically guidelines for new construction 21 and 22.

Staff Analysis

On May 27, 2014 the Commission motioned to postpone the item. After a meeting with staff the management of Hard Rock Café wants to withdraw the proposed string lights from the Certificate of Appropriateness and want to be approve just for the three poles and double fan for misters. The fans will be supported by three 6" by 6" aluminum powder coated posts that will be 11' tall. One of the posts, which will be closer to the corner, will have two mister fans, 18" in diameter. The applicant has expressed that the posts and fans will be painted brown color.

Consistency with Guidelines

1. The proposed metal poles and fans painted in brown may help blending the elements with existing landscape. The original proposal was having them painted white.

It is staff opinion that the change of colors in the posts and fans may be a more appropriate solution that the original white elements.

DROPSHIPPING

AFFILIATE PROGRAM

WHOLESALERS (<http://www.wmart.com/wholesale.html>)

(<http://www.wmart.com/wholesale.html>)

Tmart

(<http://www.tmart.com>)

WORLDWIDE FREE SHIPPING Do you like New Tmart? **Yes** **No**

Search

Hello, Sign In

Track Orders

(http://www.tmart.com/user/track_order.html)

Need

ALL CATEGORIES

Tmart Deals (<http://www.tmart.com/ShopWays/Daily-Deals.html>)

0 item(s): \$0

Top Selling (<http://www.tmart.com/ShopWays/Top-Sellers.html>)

(<http://www.tmart.com/>)

Under \$1.99 (<http://www.tmart.com/ShopWays/1.99.html>)

New Arrivals (<http://www.tmart.com/ShopWays/New-Arrivals.html>)

Free Gifts (<http://www.tmart.com/ShopWays/Free-Gifts.html>) **More**

(http://www.tmart.com/users/account_wishlist.html)

Tmart.com (<http://www.tmart.com>) > Flashlights & Lamps (<http://www.tmart.com/Flashlight-Lamp/>) > LED Light Bulbs (<http://www.tmart.com/LED-Light-Bulbs/>) > Ball Bulbs (<http://www.tmart.com/>)
E27 5W 500LM 40 LED SMD3014 3000K Warm White Edison Bulb Silver (85-265V) (http://www.tmart.com/E27-5W-500LM-40-LED-SMD3014-3000K-Warm-White-Edison-Bulb-Silver-85-265V_p157626.html)



E27 5W 500LM 40 LED SMD3014 3000K Warm White Edison Bulb Silver (85-265V)

SKU: 88010116

\$15.78

Shipping: Worldwide Free Shipping—\$0.00

Ships In: **Ships in 24 Hours**



Earn 10 Points for every \$10



- 1 + Subtotal: \$

Get free gift for order over
Earn 15 Tmart Points

Sold Out

Lowest Price Guarantee
Safe Shopping Guarantee
90 Day Money Back
180 Day Free Warranty

Add to Wish List

Wholesale Inquiry

(<http://www.wmart.com/wholesale/buy.html?pname=E27+5W+500LM+40+265V&psku=88010116&price=>

Add to Drop Shipping Cart
(http://www.tmart.com/users/cart?action=add_ds_cart&products

Get Affiliate Promotion Code

Share

Tweet

Customers Also Viewed

(<http://www.tmart.com/>)

5W-12V-5-LED-High-Power-V Light-Bulb_p111174.html)

E27 5W 5 LED 450 Lumen 6000K High Power White
\$5.92 ~~\$4.99~~

(<http://www.tmart.com/>)

3W-12V-High-Power-White-LE Bulb_p111177.html)

E27 3W 270 Lumen High Power White LED Light Bulb
\$4.02 ~~\$8.99~~



(http://www.tmart.com/pgallery/E27-5W-500LM-40-LED-SMD3014-3000K-Warm-White-Edison-Bulb-Silver-85-265V_p157626.html)
Roll over image to zoom in

See all 13 images (http://www.tmart.com/pgallery/E27-5W-500LM-40-LED-SMD3014-3000K-Warm-White-Edison-Bulb-Silver-85-265V_p157626.html?puId=E27-5W-500LM-40-LED-SMD3014-3000K-Warm-White-Edison-Bulb-Silver-85-265V)

Write a review to get 5/10 Tmart Points.
(http://www.tmart.com/product_reviews_write.html?products_id=157626)

Add a photo to get 10/20 Tmart Points.
(http://www.tmart.com/ugc/uploadimage.html?products_id=157626)

Upload your Youtube videos to get 20/40 Tmart Points.
(http://www.tmart.com/ugc/uploadvideo.html?products_id=157626)

DESCRIPTION	DETAILS	SHIPPING & PAYMENTS																												
<p>The durable LED light bulb is safe, effective and simple. The 5W LED light bulbs has long service life, and will result in money saved by lowered utility costs. With high quality, energy saving, high efficiency, long service life, the durable LED light bulbs is your best choice. The durable LED light bulb is great for landscape scene, spot lighting, architectural lighting, display scene, artwork lighting, mood lighting and so on. Order one for you now!</p> <p>Features Ultra energy efficient replacement of standard lamp LED light bulb features low power consumption No mercury, No UV, Infrared or other deleterious radiation The Light Bulb provide bright and soft light This 5W LED light bulb is brighter than normal bulbs Features up to 30000-50000 hours service time design, which enough to your daily use Widely used as down lighting or accent lighting in shops, offices and home You can install this LED light bulb within minutes</p> <p>Specifications</p> <table border="1"> <tr> <td>Key Features</td> <td>LED Bulb</td> </tr> <tr> <td>Light Source</td> <td>40 LED</td> </tr> <tr> <td>LED Size</td> <td>SMD3014</td> </tr> <tr> <td>Connector Type</td> <td>E27</td> </tr> <tr> <td>Luminous Flux</td> <td>500LM</td> </tr> <tr> <td>Output Power</td> <td>5W</td> </tr> <tr> <td>Input Voltage</td> <td>85 - 265V</td> </tr> <tr> <td>Light Color</td> <td>Warm White</td> </tr> <tr> <td>Color Temperature</td> <td>3000K</td> </tr> <tr> <td>Lifespan</td> <td>30000 - 50000hours</td> </tr> <tr> <td>Material</td> <td>Glass</td> </tr> <tr> <td>Dimensions</td> <td>1.4 x 6 cm / 4.93" x 2.36" (H x Dia)</td> </tr> <tr> <td>Weight</td> <td>4.27oz / 121g</td> </tr> <tr> <td>Color</td> <td>Silver</td> </tr> </table> <p>Package Includes 1 x E27 5W 500LM 40 LED SMD3014 3000K Warm White Edison Bulb Silver (85-265V)</p>			Key Features	LED Bulb	Light Source	40 LED	LED Size	SMD3014	Connector Type	E27	Luminous Flux	500LM	Output Power	5W	Input Voltage	85 - 265V	Light Color	Warm White	Color Temperature	3000K	Lifespan	30000 - 50000hours	Material	Glass	Dimensions	1.4 x 6 cm / 4.93" x 2.36" (H x Dia)	Weight	4.27oz / 121g	Color	Silver
Key Features	LED Bulb																													
Light Source	40 LED																													
LED Size	SMD3014																													
Connector Type	E27																													
Luminous Flux	500LM																													
Output Power	5W																													
Input Voltage	85 - 265V																													
Light Color	Warm White																													
Color Temperature	3000K																													
Lifespan	30000 - 50000hours																													
Material	Glass																													
Dimensions	1.4 x 6 cm / 4.93" x 2.36" (H x Dia)																													
Weight	4.27oz / 121g																													
Color	Silver																													

cannot be considered miniature light fixtures. More than 2" tall!

PRODUCT REVIEWS (0) [Write a review to get 5 / 10 Tmart Points \(http://www.tmart.com/product_reviews_write.html?products_id=157626\)](#)

Summary of Customer Ratings & Reviews

(0) (http://www.tmart.com/previews/E27-5W-500LM-40-LED-SMD3014-3000K-Warm-White-Edison-Bulb-Silver-85-265V_p157626.html)

out of 5 stars

5 star	0
4 star	0
3 star	0
2 star	0
1 star	0

[Write a review \(http://www.tmart.com/product_reviews_write.html?products_id=157626\)](#) to get 5/10 Tmart Points

CUSTOMER PICTURES [Upload images to get 10 / 20 Tmart Points \(http://www.tmart.com/ugc/uploadimage.html?products_id=157626\)](#)

[Upload Images \(http://www.tmart.com/ugc/uploadimage.html?products_id=157626\)](#)

CUSTOMER VIDEOS [Upload Youtube videos to get 20 / 40 Tmart Points \(http://www.tmart.com/ugc/uploadvideo.html?products_id=157626\)](#)

[Upload Video \(http://www.tmart.com/ugc/uploadvideo.html?products_id=157626\)](#)

- 

(<http://www.tmart.com>)
 9W-12V-60-LED-White-LED-L Bulb_p111182.html
 E27 9W 12V 60 LED White LED Light Bulb
\$22.92
- 

(<http://www.tmart.com>)
 4W-12V-36-LED-White-LED-L Bulb_p111183.html
 E27 5.4W 36 LED White LED Light Bulb (12V)
\$9.06 \$16.08
- 

(<http://www.tmart.com>)
 8W-12V-36-LED-White-LED-L Bulb_p111187.html
 E27 1.8W 36 LED 160 Lumen 6000K White LED
\$4.29 \$8.87
- 

(<http://www.tmart.com>)
 4W-220V-60-LED-Energy-Sav LED-Bulb-White_p112713.html
 E27 3W 60 LED Energy Saving Warm LED Bulb
\$7.13 \$10.59
- 

(<http://www.tmart.com>)
 3W-3-LED-140-Lumen-Warm-Mini-Spotlight-Bulb-85-265V-_p119252.html
 E14 3W 3LED 140Lumen Warm White Light Mini
\$5.20 \$8.89
- 

(<http://www.tmart.com>)
 3W-60-LED-White-Light-LED-110V-_p120361.html
 E27 3W 60 LED White Light LED Bulb Lamp (110V)
\$6.36 \$9.98
- 

(<http://www.tmart.com>)
 2W-38-LED-Small-Warm-Whit LED-Bulb-Lamp-110V-_p120371.html
 E27 2W 38 LED Small Warm White Light LED Bulb Lamp
\$6.17 \$9.99
- 

(<http://www.tmart.com>)
 6W-120-LED-Warm-White-Lig Bulb-Lamp-110V-_p120371.html
 E27 6W 120 LED Warm White Light LED Bulb Lamp
\$9.72 \$20.99

People Also Bought

Application

AK 1004472



CITY OF KEY WEST
BUILDING DEPARTMENT
CERTIFICATE OF APPROPRIATENESS 1-2014 010779
APPLICATION # _____

OWNER'S NAME: **Conch Shell Properties Inc** DATE: **5/1/2014**

OWNER'S ADDRESS: **905 Vonphister St Key West FL 33040** PHONE #: _____

APPLICANT'S NAME: **One Call Construction, inc** PHONE #: **305-294-0945**

APPLICANT'S ADDRESS: **1901 Flagler Ave, Key West FI 33040**

ADDRESS OF CONSTRUCTION: **313 Duval Street Key West FL 33040** # OF UNITS: _____

THERE WILL BE A FINAL INSPECTION REQUIRED UNDER THIS PERMIT

DETAILED DESCRIPTION OF WORK:
~~Installation of approximately 100 LF of festoon lighting with period replica edison style bulbs~~
 Installation of mister fans, LED gable lighting.

Chapter 837.06 F.S.-False Official Statements – Whoever knowingly makes a false statement in writing with the intent to mislead a public servant in the performance of his or her official duty shall be guilty of a misdemeanor of the second degree punishable as provided for in s. 775.082 or 775.083

This application for Certificate of Appropriateness must precede applications for building permits, right of way permits, variances, and development review approvals. Applications must meet or exceed the requirements outlined by the Secretary of the Interior's Standards for Rehabilitation and Key West's Historic Architectural Guidelines.

Once completed, the application shall be reviewed by staff for completeness and either approved or scheduled for presentation to the Historic Architectural Review Commission at the next available meeting. The applicant must be present at this meeting. The filing of this application does not ensure approval as submitted.

Applications that do not possess the required Submittals will be considered incomplete and will not be reviewed for approval.

Date: 5/1/14
Applicant's Signature: _____

Required Submittals

TWO SETS OF SCALED DRAWINGS OF FLOOR PLAN, SITE PLAN AND EXTERIOR ELEVATIONS (for new buildings and additions)
TREE REMOVAL PERMIT (if applicable)
PHOTOGRAPHS OF EXISTING BUILDING (repairs, rehabs, or expansions)
PHOTOGRAPHS OF ADJACENT BUILDINGS (new buildings and additions)
ILLUSTRATIONS OF MANUFACTURED PRODUCTS TO BE USED SUCH AS SHUTTERS, DOORS, WINDOWS, PAINT COLOR CHIPS, AND AWNING FABRIC SAMPLES

REVENUE
 Date: 5/1/14 Time: 11:41:00
 PT 1004472
 * BUILDING PERMITS-NEW
 Date: 5/1/14 \$100.00
 Trans number: 3003166
 WI VISA/MASTERC
 Staff Approval: \$100.00
 Trans date: 5/09/14 Time: 11:41:00
 Fee Due: \$ _____

HISTORIC ARCHITECTURAL REVIEW APPLICATION

HISTORIC ARCHITECTURAL REVIEW COMMISSION USE ONLY

Approved _____

Denied _____

Deferred

[Signature]
5/27/14

Reason for Deferral or Denial:

HARC Comments:

*House is listed as a contributing resource. structure
was built ca. 1890. style Queen Ann Revival
Guidelines for exterior lighting.*

Limit of Work Approved, Conditions of Approval and/or Suggested
Changes:

Date: _____

Signature: _____

Historic Architectural
Review Commission



THE CITY OF KEY WEST
Planning Department
Post Office Box 1409 Key West, FL 33041-1409

June 02, 2014

**One Call Construction
1901 Flagler Avenue
Key West, FL 33040**

**RE: 313 Duval Street / H14-01-0779
Installation of three poles 11 feet tall for light strings and fans.**

Dear Applicant,

This letter is to notify you that the Key West Historic Architectural Review Commission **postponed** the above mentioned project at the public hearing held on May 27, 2014.

Should you have any questions, please do not hesitate to contact me at your convenience. On behalf of the Historic Architectural Review Commission of our City, thank you for your interest in the preservation of Key West historic heritage.

PLEASE BE ADVISED THAT THIS LETTER IS NOT A RENDERING OF THE DECISION OF HARC, NOR IS IT THE ORDER FROM WHICH AN APPEAL CAN BE TAKEN. THIS IS MERELY A COURTESY SUMMARY OF THE EVENTS AT THE PERTINENT HARC MEETING.

PLEASE GOVERN YOURSELF ACCORDINGLY.

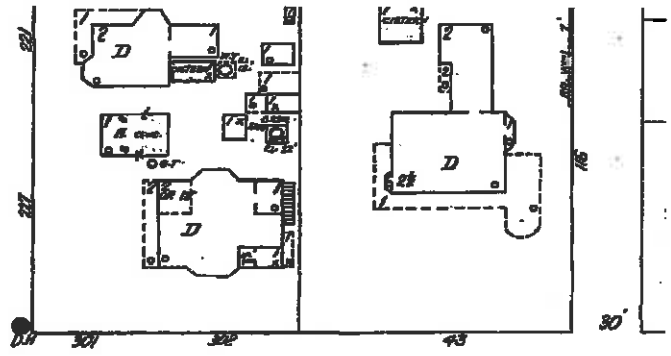
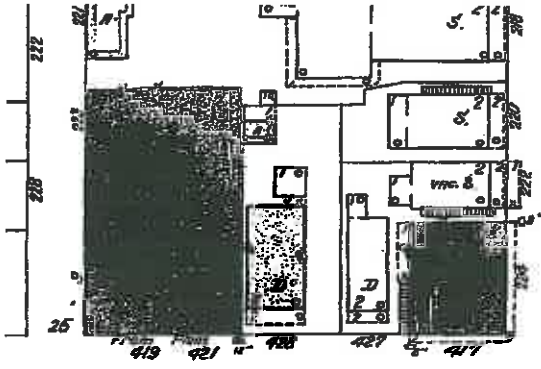
Sincerely,

A handwritten signature in blue ink, appearing to read "Kevin Bond".

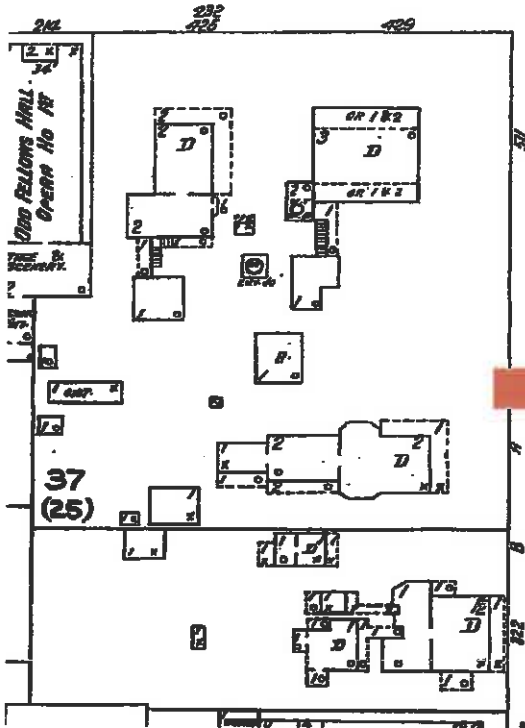
Kevin Bond, AICP
Planner II
305-809-3725

COPY

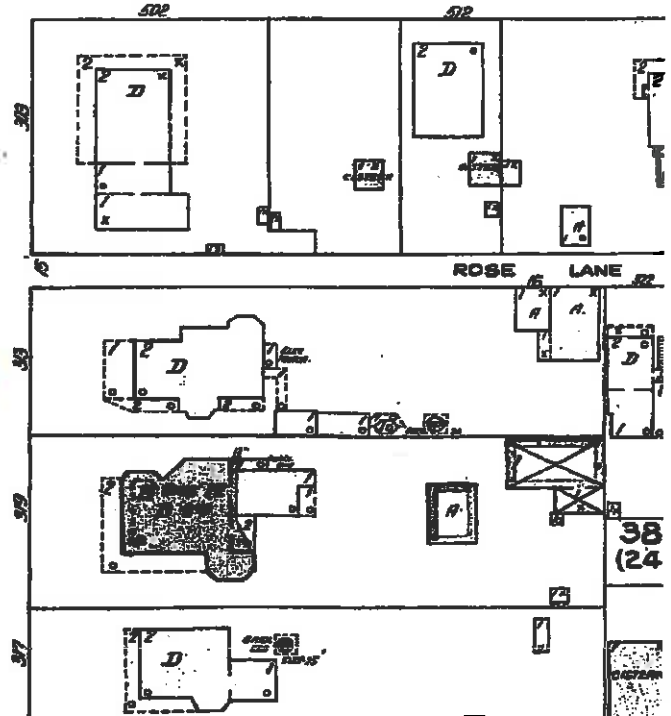
Sanborn Maps



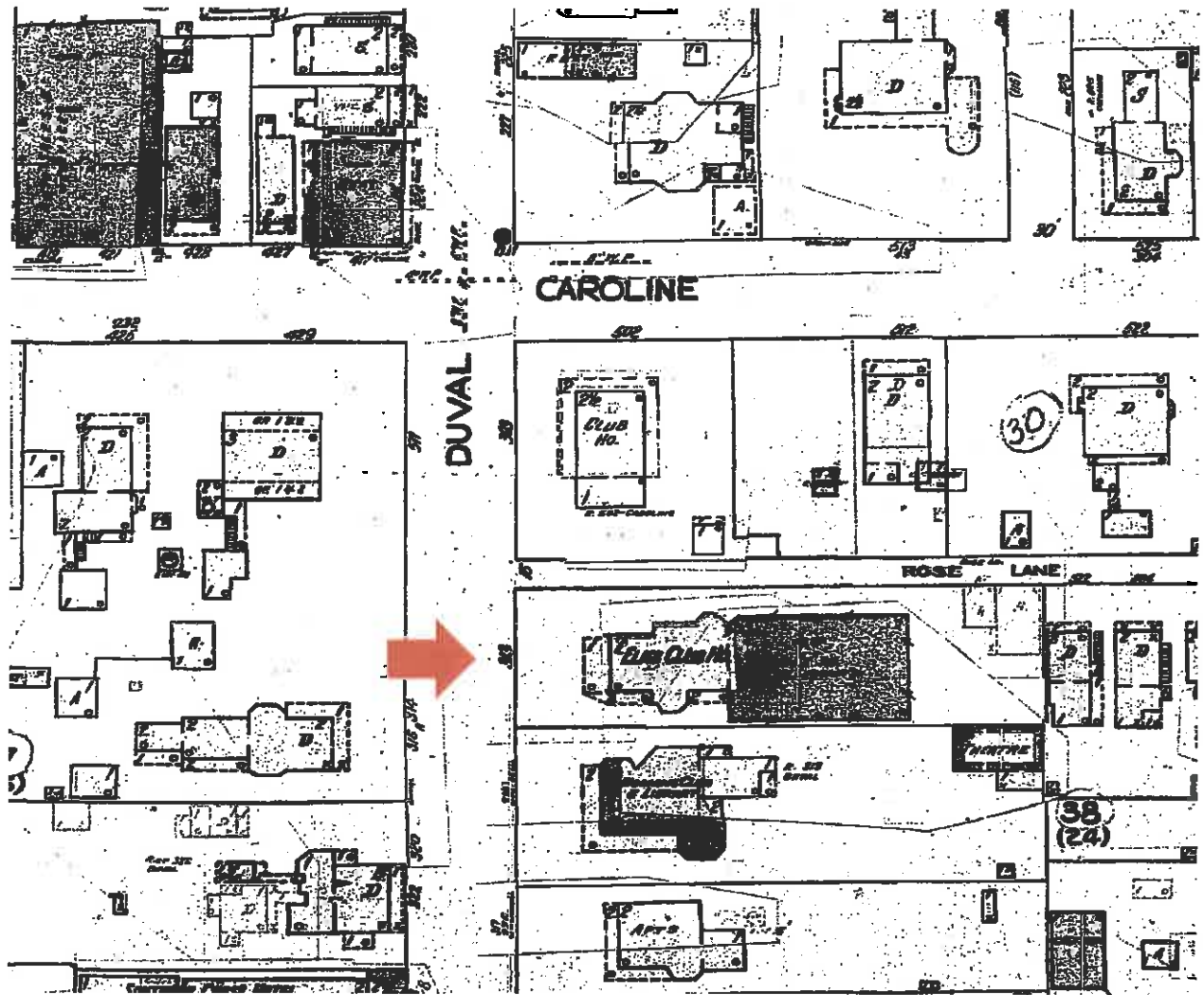
CAROLINE



DUVAL

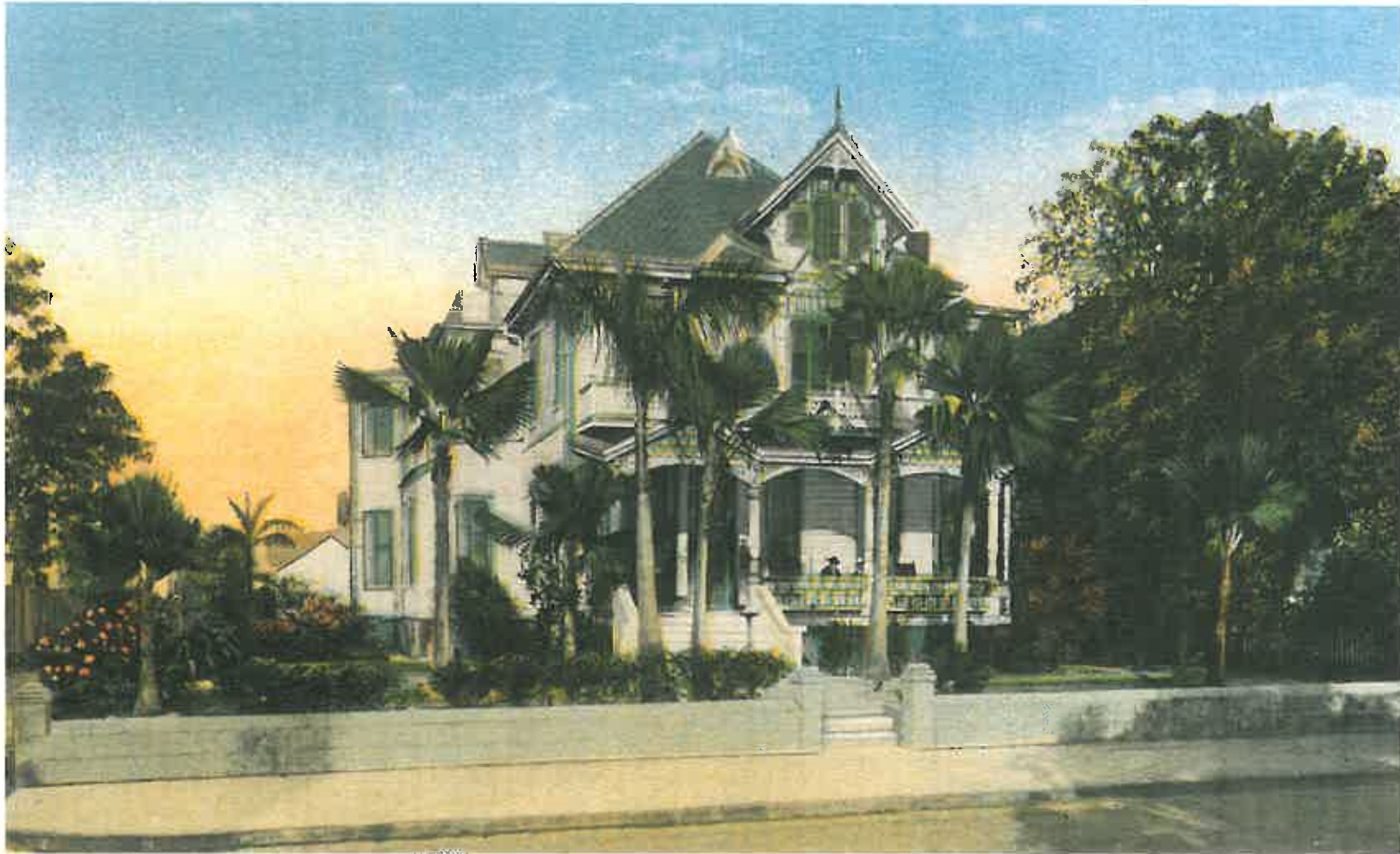


#313 Duval Street Sanborn map 1926



#313 Duval Street Sanborn map 1948

Project Photos



Color postcard of the Elks Club at #313 Duval Street. Monroe County Library.



#313 Duval Street circa 1960. Monroe County Library.



#313 Duval Street 1990. Monroe County Library.

Revised Drawings

MISTER & POST
(TO BE PAINTED
SW-6068 BREVETY BROWN)

MISTER & POST
(TO BE PAINTED
SW-6068 BREVETY BROWN)



HARD ROCK CAFE - KEY WEST, FL

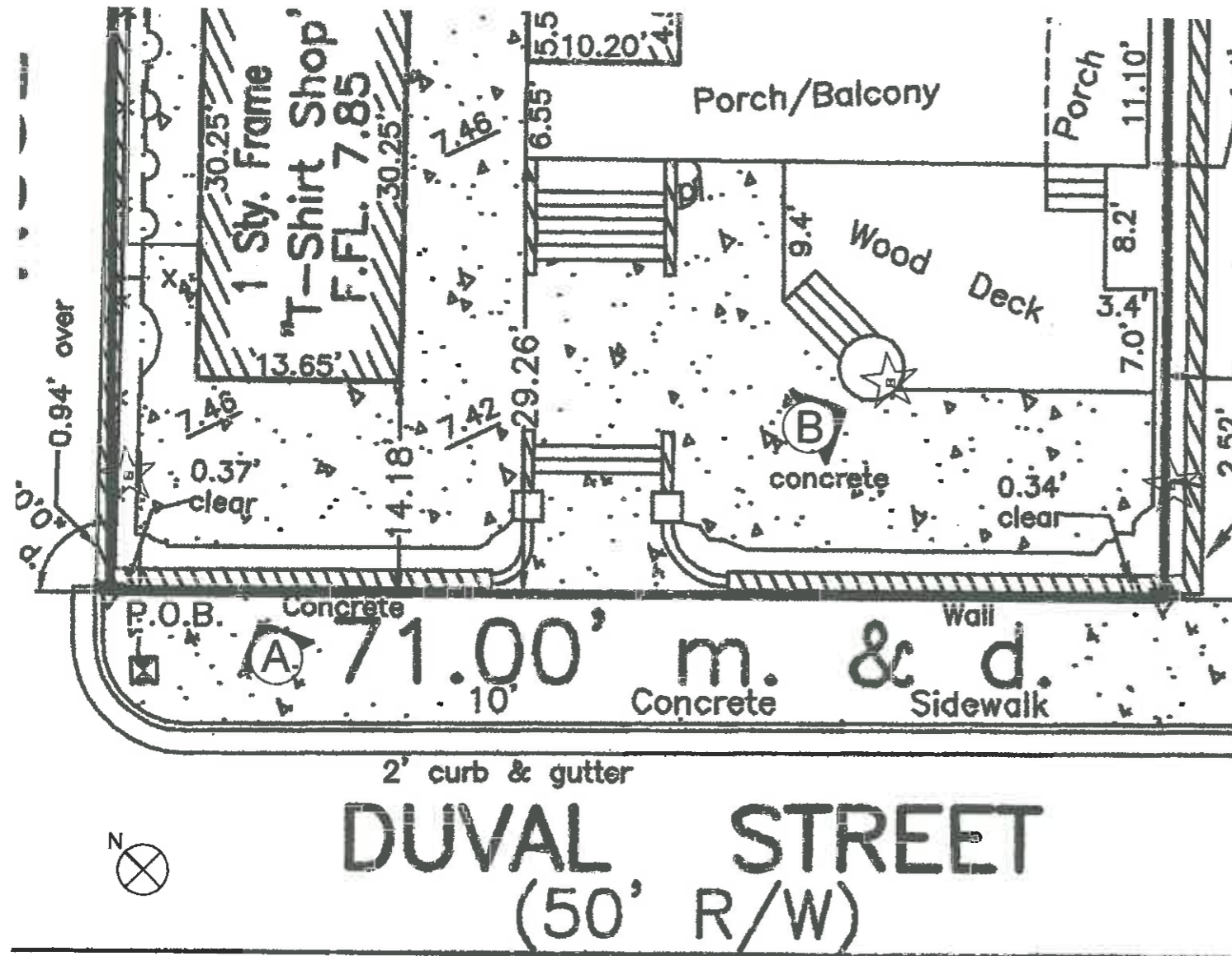
PROPOSED MISTER FANS

MISTER

MISTER



Proposed Plans



1 Partial Site Plan - Pole Locations
A-1

Scale $\frac{3}{32}'' = 1'-0''$



2 Mister Fan Pole Detail
A-1

NTS



A Pole Northwest - Pole Foundation Below Grade - Pole w/ Fans & Festoon Lights -

B Pole Center - Pole Attached to Deck Wall & Railing - Pole w/ Fans & Festoon Lights -

C Pole Southeast - Pole Foundation Below Grade - Pole w/ Festoon Lights Only -

3 Pole Locations
A-1 See A-4 for Model

NTS

ONE CALL CONSTRUCTION, INC.

Pole Locations & Details
Hardrock
313 Duval Street
Key West, FL 33040

PN: 13011625
5/12/2014

A-1

Sheet 01 of 04

"One Call Does It All"

1901 Flagler Ave - Key West, FL 33040
Tel: 305-294-0945 - Fax: 305-359-3226
E-mail: info@constructionkeywest.com

CGC1507029
CGC1327352
SL3188768



1 Gable Lighting Locations Proposed
A-3

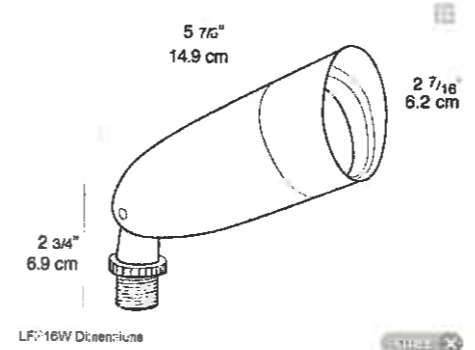
NTS



Color: White

LFP16W

- Rugged die cast aluminum housing with polyester powder coat finish
- Deep Glare Shield
- Weatherproof lens and gasket
- O-ring seal for full weather protection
- No-nut brace & stainless steel external hardware
- Rugged mounting arm has 1/2" threads and pivots 180°
- E2 Gnp sockets are color matched to fixture and can be tightened with fingers, pliers or screwdriver



Proposed Fixture

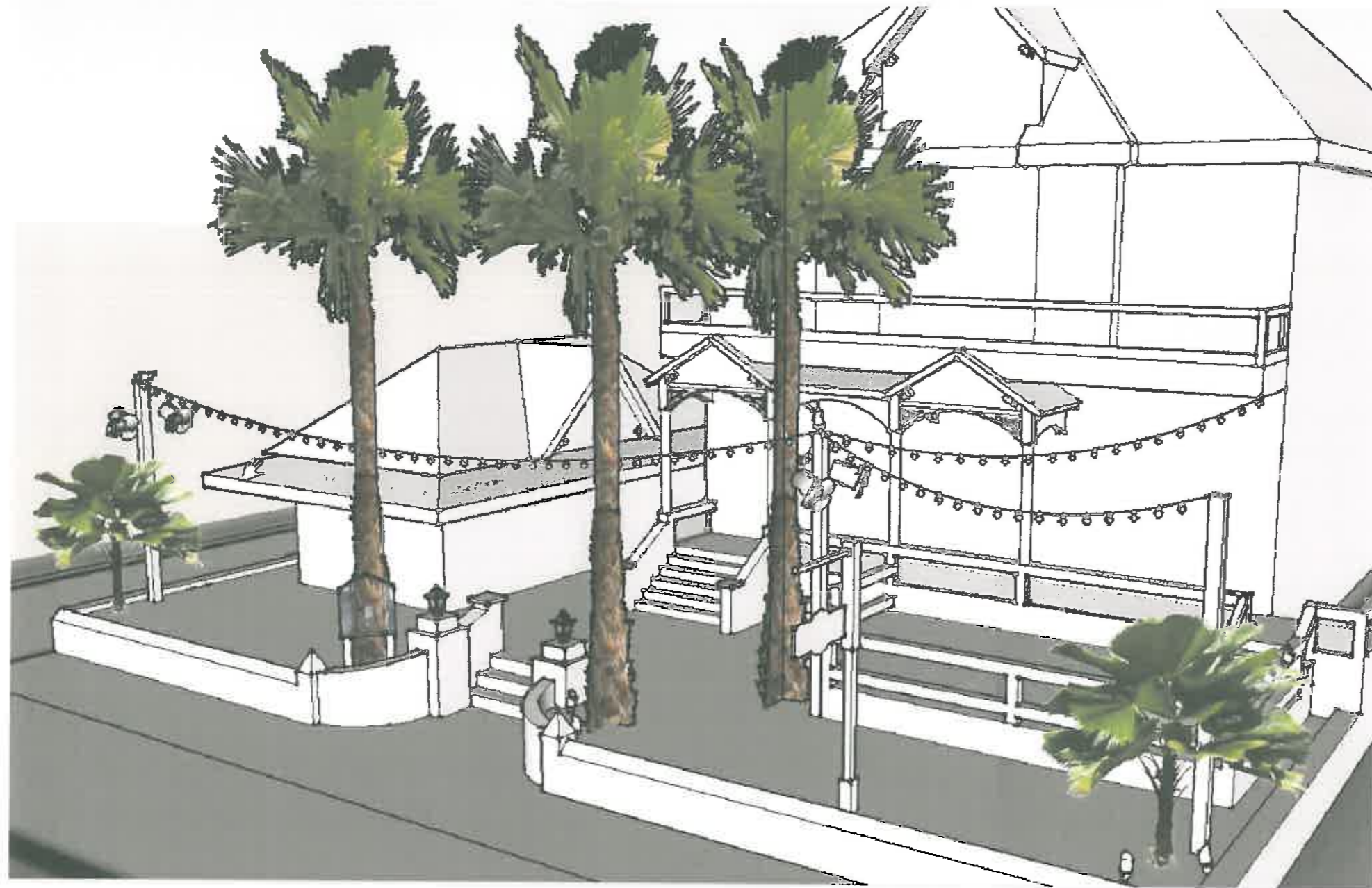
ONE CALL CONSTRUCTION, INC.

Gable Lighting Locations
Hardrock
313 Duval Street
Key West, FL 33040

PN: 13011625
5/12/2014
A-3
Sheet 03 of 04

"One Call Does It All"
1901 Flagler Ave - Key West, FL 33040
Tel: 305-294-0945 - Fax: 305-359-3226
E-mail: info@constructionkeywest.com

CGC1507029
CGC1327352
SL3188768

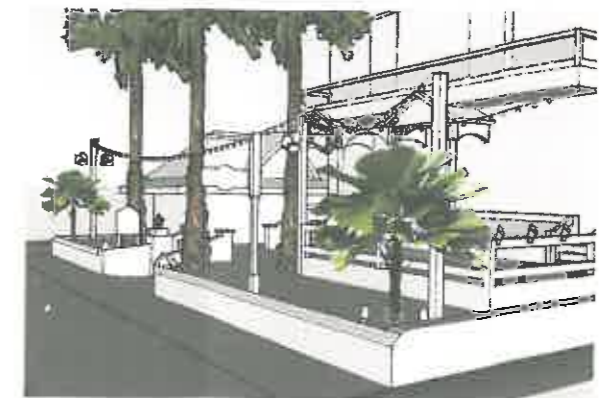


1 Pole Locations, Lighting & Fans
A-4

NTS



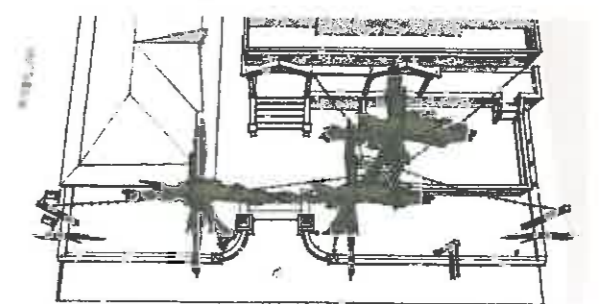
Edison LED Lamp



Looking West



Looking East



From Above

ONE CALL CONSTRUCTION, INC.

"One Call Does It All"

1901 Flagler Ave - Key West, FL 33040
Tel: 305-294-0945 - Fax: 305-359-3226
E-mail: info@constructionkeywest.com

CGC1507029
CGC1327352
SL3188768

Lighting & Fans Model
Hardrock
313 Duval Street
Key West, FL 33040

PN: 13011625
5/12/2014

A-4

Sheet 04 of 04

E27 5W 500LM 40 LED SMD3014 3000K Warm White Edison Bulb Silver (85-265V)



Spec Sheet



Color: White

LFP16W

Rugged die cast aluminum housing with polyester powder coat finish
 Deep Glare Shield
 weatherproof lens and gasket
 "O" Ring seal for full weather protection
 No-rust brass & stainless steel external hardware
 Rugged mounting arm has 1/2" threads and pivots 180
 EZ Grip locknuts are color matched to fixture and can be tightened with fingers, pliers or screwdriver

Lamp Info

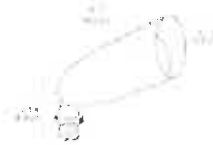
Type: PAR16
 Watts: 60W
 Shape/Size: N/A
 Base: N/A
 ANSI: N/A
 Hours: 2,000
 Lamp Lumens: 650
 Efficacy: N/A

Ballast Info

Type: N/A
 120V: N/A
 208V: N/A
 240V: N/A
 277V: N/A
 Input Watts: N/A

Dimensions

Weight: 0.8 lbs



Technical Specifications

UL Listing:
 Suitable for wet locations. Suitable for mounting within 1.2m (4ft) of the ground.

Swivels:
 1/2" NPS threaded arm with serrated locking swivel fits all standard mounting boxes. EZ Grip locknuts color matched to fixture.

Housings:
 Precision die cast aluminum.

Compatibility:
 Fixture is compatible with GE and Sylvania Par16 lamps. Not compatible with Philips Par16 lamp.

Voltage:
 120.

Patents:
 RAB sensor and fixture designs are protected under U.S. and International Intellectual Property laws.

Sockets:
 Medium base porcelain with all copper current carrying components and spring loaded center contact.



Elite MR16

The same performance that you have come to expect in TCP PAR lamps, can now be found in our LED MR16s – The perfect replacement for 50 watt halogen.

Limitless options for the following applications:

- Track Lights
- Recessed Downlights
- Display Lights
- Outdoor Fixtures (that Protect from Elements)
- Suitable for Enclosed Fixtures

Great features and benefits:

- Energy Efficient: 80% more efficient than halogen.
- Replaces 50W halogen.
- Solutions for 12V, GU10 and medium base.
- Excellent CBCP and beam quality.
- Long Life: 25,000 hours (lasts at least 12 times longer than halogen.)
- ROI < 1 year.
- Excellent color consistency and high color rendering (CRI).
- Smooth, uniform dimming.*



12V MR16

GU10

PAR16

LED
we know light.™



ELITE Series

LED Dimmable 7W MR16 Lamp

LED Dimmable MR16 25,000 Hours average rated life, 12 & 120 Volts

Applications:

Ideal for dimmable MR16 flood and spot applications.

- + Track Lights
- + Display Lights
- + Recessed Downlights
- + Suitable for Enclosed Fixtures
- + Outdoor Fixtures that Protect Lamps from the Elements



Features

Benefits

- | | |
|---|---|
| High lumen output | Replaces 50W halogen MR16 |
| Up to 85% less energy than halogen alternatives | Instant energy savings |
| Smooth, uniform dimming* | Set the perfect mood & atmosphere |
| Long life | Minimizes replacement and maintenance costs |
| Very low heat generation | Perfect for sensitive display lighting such as art galleries. |
| Excellent Color Consistency and CRI | Enhances colors of focal point while maintaining uniformity throughout lighting installation from lamp to lamp. |
| Low weight | Track or down light installations are not strained by excess weight. |
| Shatter resistant | Lower the risk of injury and breakage |

Catalog Number

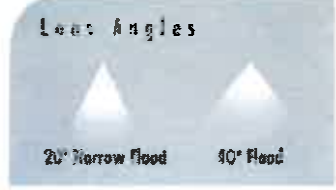
Notes

Type



Specifications

- Input Line Voltage: 12V AC/DC & 120V*
- Input Power 7W
- Input Line Frequency 50/60HZ
- Lamp Life (Rated) 25,000 hrs
- Minimum Starting Temp -30°C
- Maximum Operating Temp 40°C
- CCT 24K, 27K, 30K, 41K
- CRI 82
- Beam Angles 20 & 40



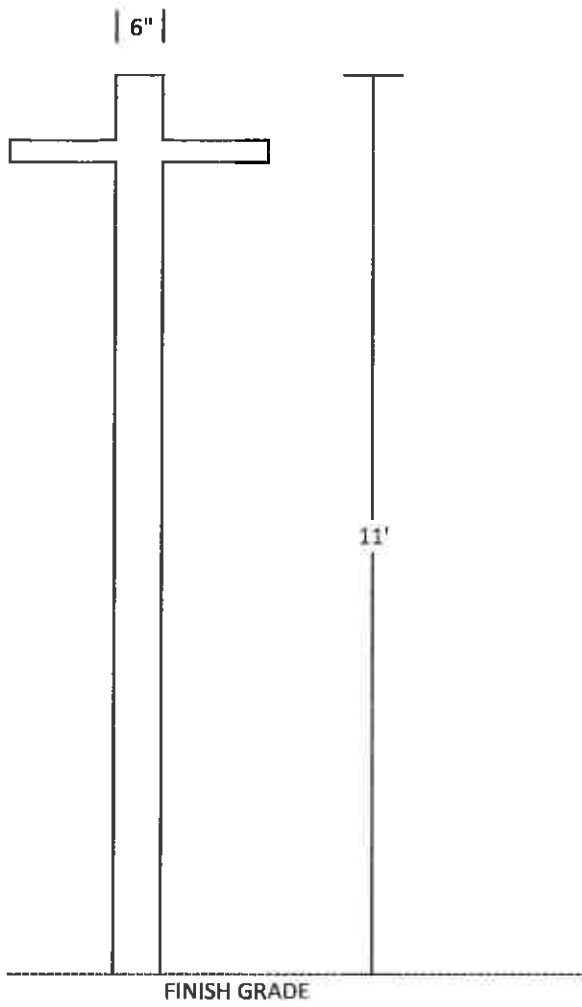
*Some transformers are not compatible with LED lamps. See tcp.com for preferred transformer and dimmer compatibility.

Warranties and Certifications:	Item #	Description	Voltage	Wattage	Replacement	Lumens	LPW	CBC est.	Beam Angle	CCT	CRI	M.O.L. (inches)	Diameter (inches)	Case Quantity	
 3 YEAR WARRANTY	120V GU10 MR16														
	LED7MR16GU1024KNFL	Dimmable 7W GU10 MR16 - 2400K, 20°	120	7	50	500	71.4	TBD	20	2400K	82	2.5	2	12	
	LED7MR16GU1024KFL	Dimmable 7W GU10 MR16 - 2400K, 40°	120	7	50	500	71.4	TBD	40	2400K	82	2.5	2	12	
	LED7MR16GU1027KNFL	Dimmable 7W GU10 MR16 - 2700K, 20°	120	7	50	500	71.4	3296	20	2700K	82	2.5	2	12	
	LED7MR16GU1027KFL	Dimmable 7W GU10 MR16 - 2700K, 40°	120	7	50	500	71.4	1057	40	2700K	82	2.5	2	12	
	LED7MR16GU1030KNFL	Dimmable 7W GU10 MR16 - 3000K, 20°	120	7	50	525	75.0	3296	20	3000K	82	2.5	2	12	
	LED7MR16GU1030KFL	Dimmable 7W GU10 MR16 - 3000K, 40°	120	7	50	525	75.0	1057	40	3000K	82	2.5	2	12	
	LED7MR16GU1041KNFL	Dimmable 7W GU10 MR16 - 4100K, 20°	120	7	50	550	78.6	3296	20	4100K	82	2.5	2	12	
LED7MR16GU1041KFL	Dimmable 7W GU10 MR16 - 4100K, 40°	120	7	50	550	78.6	1057	40	4100K	82	2.5	2	12		
Specification Notes:	12V MR16														
	LED712VMR1624KNFL	Dimmable 7W 12V MR16 - 2400K, 20°	12	7	50	500	71.4	TBD	20	2400K	82	2	2	12	
	LED712VMR1624KFL	Dimmable 7W 12V MR16 - 2400K, 40°	12	7	50	500	71.4	TBD	40	2400K	82	2	2	12	
	LED712VMR1627KNFL	Dimmable 7W 12V MR16 - 2700K, 20°	12	7	50	500	71.4	3296	20	2700K	82	2	2	12	
	LED712VMR1627KFL	Dimmable 7W 12V MR16 - 2700K, 40°	12	7	50	500	71.4	1057	40	2700K	82	2	2	12	
	LED712VMR1630KNFL	Dimmable 7W 12V MR16 - 3000K, 20°	12	7	50	525	75.0	3296	20	3000K	82	2	2	12	
	LED712VMR1630KFL	Dimmable 7W 12V MR16 - 3000K, 40°	12	7	50	525	75.0	1057	40	3000K	82	2	2	12	
	LED712VMR1641KNFL	Dimmable 7W 12V MR16 - 4100K, 20°	12	7	50	550	78.6	3296	20	4100K	82	2	2	12	
LED712VMR1641KFL	Dimmable 7W 12V MR16 - 4100K, 40°	12	7	50	550	78.6	1057	40	4100K	82	2	2	12		
For the most up-to-date specs, please visit www.tcp.com	120V PAR16														
	LED7P1624KNFL	Dimmable 7W PAR16 - 2400K, 20°	120	7	50	500	71.4	TBD	20	2400K	82	3	2	12	
	LED7P1624KFL	Dimmable 7W PAR16 - 2400K, 40°	120	7	50	500	71.4	TBD	40	2400K	82	3	2	12	
	LED7P1627KNFL	Dimmable 7W PAR16 - 2700K, 20°	120	7	50	500	71.4	3296	20	2700K	82	3	2	12	
	LED7P1627KFL	Dimmable 7W PAR16 - 2700K, 40°	120	7	50	500	71.4	1057	40	2700K	82	3	2	12	
	LED7P1630KNFL	Dimmable 7W PAR16 - 3000K, 20°	120	7	50	525	75.0	3296	20	3000K	82	3	2	12	
	LED7P1630KFL	Dimmable 7W PAR16 - 3000K, 40°	120	7	50	525	75.0	1057	40	3000K	82	3	2	12	
	LED7P1641KNFL	Dimmable 7W PAR16 - 4100K, 20°	120	7	50	550	78.6	3296	20	4100K	82	3	2	12	
LED7P1641KFL	Dimmable 7W PAR16 - 4100K, 40°	120	7	50	550	78.6	1057	40	4100K	82	3	2	12		

TCP, Inc.
325 Campus Dr. | Aurora, Ohio 44202 | P: 1-800-324-1496 | tcp.com

©TCP, Inc. © 2012 50138





FAN POST DETAIL

1. POSTS ARE 6" SQUARE ALUMINUM WITH WHITE POWDER COATED FINISH.
2. POSTS HAVE 2" SQUARE MOUNTING ARMS AT 10' FOR INSTALLATION OF FANS.
3. POST IS EQUIPPED WITH ELECTRICAL OUTLETS, HANDHOLE, AND CONCEALED UPLIGHTING.

Merritt Manufacturing 18" Fan Specification Sheet

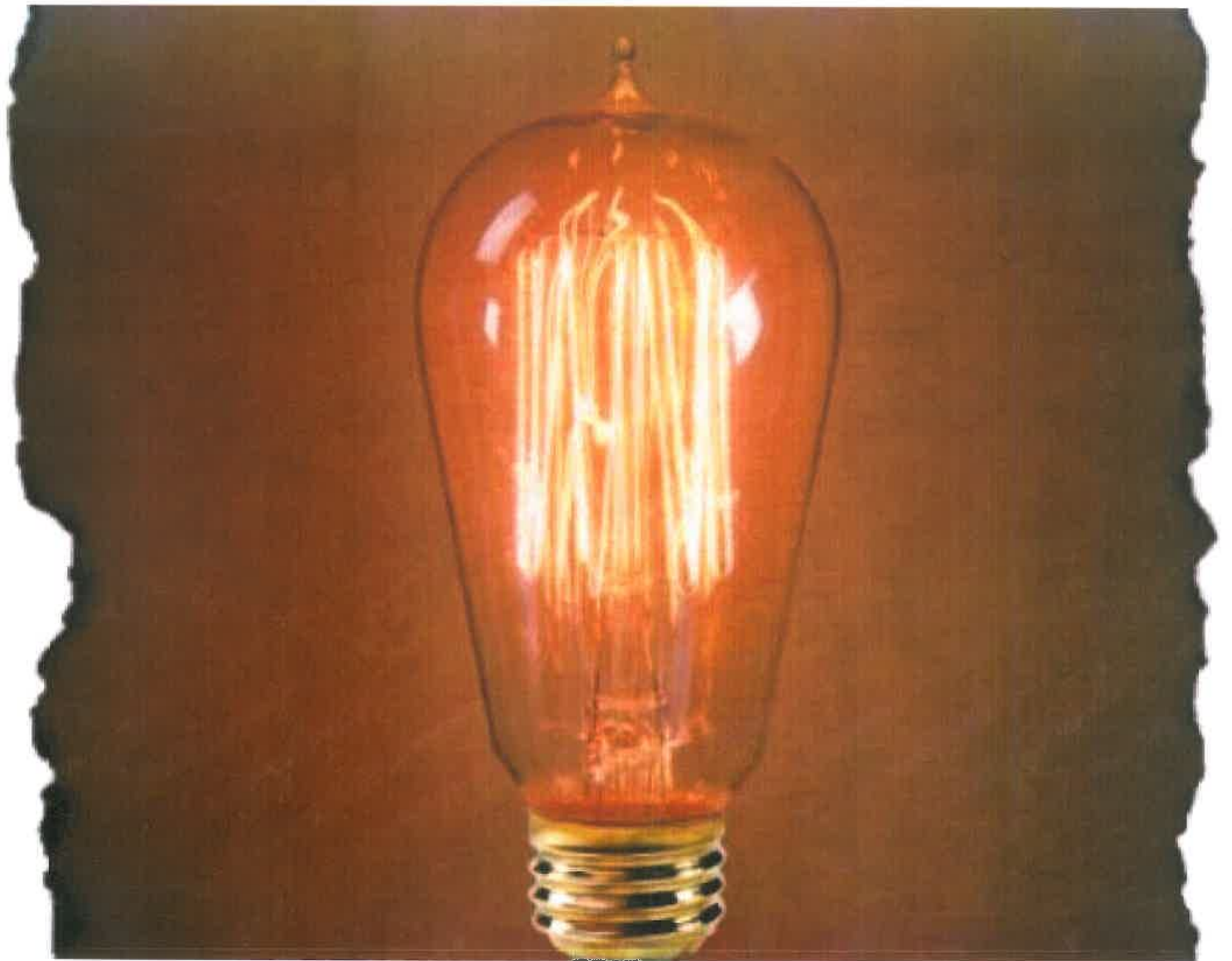
Item Description: 18" Wall Mount outdoor - Black or White

Factory Model: MCS-1018 & MCS-2018

Features:

Fan Diameter:	18"
Finish:	White or Black finish
Construction Material:	Steel
# & Color of Blades:	White or Black
Blade Material:	Aluminum
Switch Box:	<input checked="" type="checkbox"/> Yes <input type="checkbox"/> no
# of Speeds & Switch Type:	3-speed & Pull chain
Cord Length & Type:	9' & SJT 18 AWG 105C FT2
Motor Size:	25mm stator thickness and 127mm stator OD
Motor HP:	1/8HP
Silicon Steel:	<input checked="" type="checkbox"/> Yes <input type="checkbox"/> no
Bearing Type:	Oil Bushing
Overload Type:	Resetable
Grill Wire Thickness:	2.2mm & 3.3mm Iron wire
Amps: High, Med, Low:	1.45, 1.35, 1.27
Watts: High, Med, Low:	168, 149, 134
Rpm: High, Med, Low:	1570, 1400, 1000
Other Features:	3-speed sealed UL-507 motor Stainless Hardware





Noticing

Public Meeting Notice

The Historic Architectural Review Commission will hold a public hearing at 5:30 p.m., May 27, 2014 at Old City Hall, 510 Greene Street, Key West, Florida. The purpose of the hearing will be to consider a request for:

INSTALLATION OF THREE POLES 11 FEET TALL FOR LIGHT STRINGS AND FANS.

FOR- #313 DUVAL STREET

Applicant- One Call Construction, Agent

Application # H14-01-0779

If you wish to see the application or have any questions, you may visit the Planning Department during regular office hours at 3140 Flagler Avenue, call 809-3973 or visit our website at www.keywestcity.com.

THIS NOTICE CAN NOT BE REMOVED FROM THE SITE UNTIL HARC FINAL DETERMINATION

**Property Appraiser
Information**



Scott P. Russell, CFA
Property Appraiser
Monroe County, Florida

Key West (305) 292-3420
Marathon (305) 289-2550
Plantation Key (305) 852-7130

Property Record Card -
Maps are now launching the new map application version

Website tested on IE8,
IE9 & Firefox.
Requires Adobe Flash
10.3 or higher

Alternate Key: 1004472 Parcel ID: 00004300-000000

Ownership Details

Mailing Address:
CONCH SHELL PROPERTIES INC
905 VONPHISTER ST
KEY WEST, FL 33040-4747

Property Details

PC Code: 21 - RESTAURANTS & CAFETERIAS
Millage Group: 10KW
Affordable Housing: No
Section-Township-Range: 06-68-25
Property Location: 313 DUVAL ST KEY WEST
Legal Description: KW PT LOT 3 SQR 24 A5-132/4 OR920-834/35Q/C OR920-836/38 OR1004-635 OR1334-606(LG)

Click Map Image to open interactive viewer



Land Details

Land Use Code	Frontage	Depth	Land Area
100D - COMMERCIAL DRY	71	243	17,253.00 SF

Building Summary

Number of Buildings: 3
Number of Commercial Buildings: 3

Total Living Area: 11237
Year Built: 1909

Building 1 Details

Building Type
Effective Age 20
Year Built 1909
Functional Obs 0

Condition G
Perimeter 630
Special Arch 0
Economic Obs 0

Quality Grade 450
Depreciation % 23
Grnd Floor Area 6,222

Inclusions:

Roof Type
Heat 1
Heat Src 1

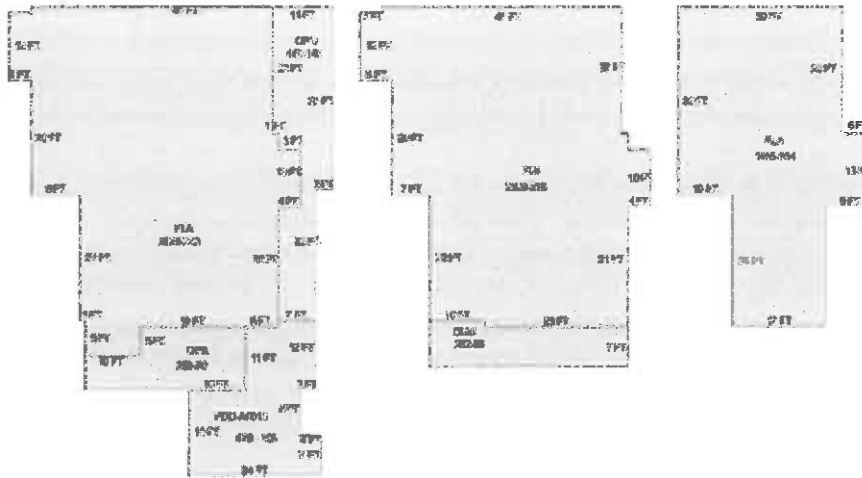
Roof Cover
Heat 2
Heat Src 2

Foundation
Bedrooms 0

Extra Features:

2 Fix Bath 0
3 Fix Bath 0
4 Fix Bath 0
5 Fix Bath 0
6 Fix Bath 0
7 Fix Bath 0
Extra Fix 31

Vacuum 0
Garbage Disposal 0
Compactor 0
Security 0
Intercom 0
Fireplaces 0
Dishwasher 0



Sections:

Nbr	Type	Ext Wall	# Stories	Year Built	Attic	A/C	Basement %	Finished Basement %	Area
0	PDO		1	1987					478
2	FLA		1	1987					2,428
3	OPX		1	1987					269
5	OPU		1	1987					463
6	FLA		1	1987					2,329
7	OUU		1	1987					262

8	FLA	1	1987	1,465
---	-----	---	------	-------

Interior Finish:

Section Nbr	Interior Finish Nbr	Type	Area %	Sprinkler	A/C
	1192	REST/CAFET-A-	100	Y	Y
	1196	REST/CAFET-A-	100	Y	Y
	1198	OFFICE BLD-1 STORY	100	Y	Y

Exterior Wall:

Interior Finish Nbr	Type	Area %
356	CUSTOM	100

Building 2 Details

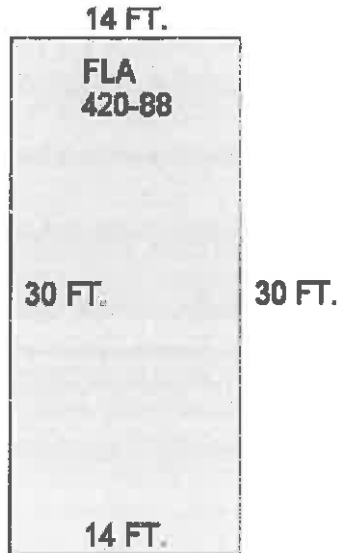
Building Type	Condition G	Quality Grade 350
Effective Age 17	Perimeter 88	Depreciation % 23
Year Built 1995	Special Arch 0	Grnd Floor Area 420
Functional Obs 0	Economic Obs 0	

Inclusions:

Roof Type	Roof Cover	Foundation
Heat 1	Heat 2	Bedrooms 0
Heat Src 1	Heat Src 2	

Extra Features:

2 Fix Bath 0	Vacuum 0
3 Fix Bath 2	Garbage Disposal 0
4 Fix Bath 0	Compactor 0
5 Fix Bath 0	Security 0
6 Fix Bath 0	Intercom 0
7 Fix Bath 0	Fireplaces 0
Extra Fix 4	Dishwasher 0



Sections:

Nbr	Type	Ext Wall	# Stories	Year Built	Attic	A/C	Basement %	Finished Basement %	Area
1	FLA		1	1996					420

Interior Finish:

Section Nbr	Interior Finish Nbr	Type	Area %	Sprinkler	A/C
	1199	1 STY STORE-B	100	N	Y

Exterior Wall:

Interior Finish Nbr	Type	Area %
357	CUSTOM	100

Building 3 Details

Building Type
 Effective Age 18
 Year Built 1949
 Functional Obs 0

Condition G
 Perimeter 278
 Special Arch 0
 Economic Obs 0

Quality Grade 400
 Depreciation % 23
 Grnd Floor Area 4,595

Inclusions:

Roof Type
 Heat 1
 Heat Src 1

Roof Cover
 Heat 2
 Heat Src 2

Foundation
 Bedrooms 0

Extra Features:

2 Fix Bath 0
 3 Fix Bath 0
 4 Fix Bath 0
 5 Fix Bath 0

Vacuum 0
 Garbage Disposal 0
 Compactor 0
 Security 0

6 Fix Bath 0
 7 Fix Bath 0
 Extra Fix 15

Intercom 0
 Fireplaces 0
 Dishwasher 0



Sections:

Nbr	Type	Ext Wall	# Stories	Year Built	Attic	A/C	Basement %	Finished Basement %	Area
1	FLA		1	1987					4,595

Interior Finish:

Section Nbr	Interior Finish Nbr	Type	Area %	Sprinkler	A/C
	1200	RESTRNT/CAFETR-B-	100	Y	Y

Exterior Wall:

Interior Finish Nbr	Type	Area %
358	C.B.S.	100

Misc Improvement Details

Nbr	Type	# Units	Length	Width	Year Built	Roll Year	Grade	Life
1	RW2:RETAINING WALL	276 SF	0	0	1949	1950	3	50
2	FN2:FENCES	72 SF	12	6	1994	1995	2	30
3	FN2:FENCES	336 SF	56	6	1994	1995	2	30
4	FN2:FENCES	51 SF	17	3	1994	1995	2	30
5	FN2:FENCES	312 SF	52	6	1994	1995	2	30
6	PT3:PATIO	1,288 SF	0	0	1994	1995	2	50
7	FN2:FENCES	234 SF	0	0	1995	1996	2	30

8	CL2:CH LINK FENCE	78 SF	13	6	1995	1996	1	30
9	PT3:PATIO	260 SF	0	0	1995	1996	2	50
10	PT3:PATIO	527 SF	31	17	1996	1997	2	50
11	FN2:FENCES	540 SF	90	6	1997	1998	2	30

Appraiser Notes

2003-06-12- BLDG #1 HARD ROCK CAFE BLDG #2 TEE SHIRT SHOP BLDG #3 ATTACHED TO REAR OF BLDG # 1 2003-06-11- ADDED FLA #8, 3RD STORY OFFICE. WMC 1995 DOR SALE PARCEL

Building Permits

Bldg Number	Date Issued	Date Completed	Amount	Description	Notes	
1	07-5481	12/20/2007	13,000	Commercial	REPLACE 500 SF OF DROP CEILING, TILE & GRID IN KITCHEN AREA, SAND & REFINISH 625 SF, INSTALL APPROX. 300 SF OF 1X4 T&G DECKING SECOND FLOOR	
1	08-2455	07/16/2008	1,500	Commercial	ROOFING	
1	09-0811	03/27/2009	2,450	Commercial	INSTALL FOUR SQRS. OF TAPERED INSULATION & FOUR SQRS. OF BUILT UP ROOFING	
1	08-4209	11/10/2008	19,900	Commercial	INSTALL WALK-IN FREEZER; INDOOR CONDENSOR ON EXISTING STAND ON ROOF EXISTING POWER.	
1	08-3247	09/04/2008	13,100	Commercial	REPLACE T SPLIT A/C EQUIPMENT SEVEN TON.	
1	09-1551	05/29/2009	9,000	Commercial	REPLACE 1327SF OF SIDING WITH 120LF OF TRIM ON FIRST AND SECOND FLOOR. REPLACE 9 2/2 WOOD WINDOWS TO MATCH EXISTING WINDOWS COVERED WITH COORUGATED STORM PANELS. REPLACE 200 SF OF LATTICE SKIRT.	
1	08-4208	11/12/2008	3,500	Commercial	DEMO EXISTNG WALK IN FREEZER AND INSTALL NEW FREEZER BOX.	
1	08-4210	11/12/2008	2,355	Commercial	RUN POWER TO NEW WALK-IN FREEZER.	
1	07-5481	12/20/2007	13,000		REPLACE 500SF OF DROP CEILING, TILE AND GROUT IN KITCHEN AREA, SAND AND REFINISH 625SF OF WOOD FLOOR IN LOWER DINING AREA, SAND AND REFINISH BAR TOPS. INSTALL 300SF OF 1X4 T&G DECKING ON SECOND FLOOR BALCONY.	
1	08-4528	12/16/2008	19,900	Commercial	REMOVE AND REPLACE SUB-FLOOR AND TILE IN WAIT STATION AREA. EXCAVATE AROUND EXTERIOR OF CISTERN TO WATER PROOF. FURR WALLS AND CEILING IN CISTERN/STORAGE ROOM TO INSULATE. APPLY DURAROCK AND STUCCO FINISH.	
1	13-1404	04/12/2013	15,000	Commercial	CHANGE OUT 20 TON A/C CONDENSOR ONLY.	
1	B953562	10/01/1995	12/01/1995	130,000	Commercial	REMODEL REAR BUILDING
1	B953512	10/01/1995	12/01/1995	5,000	Commercial	DEMO INTERIOR
1	P953533	10/01/1995	12/01/1995	7,064	Commercial	PLUMBING
1	E953566	10/01/1995	12/01/1995	11,300	Commercial	RENOVATIONS/ALTERATIONS
1	M953579	10/01/1995	12/01/1995	33,000	Commercial	REPLACE 4/10-1/5 TON AC
1	E953648	10/01/1995	12/01/1995	4,000	Commercial	100 KW GENERATOR
1	E953887	11/01/1995	12/01/1995	2,100	Commercial	ELECTRIC SERVICES
1	B954283	12/01/1995	09/01/1996	1,650	Commercial	AWNNGS
1	95-0176	12/01/1995	09/01/1996	10,000	Commercial	RENOVATIONS

1	96-2144	05/01/1996	09/01/1996	25,000	Commercial	DEMO OF BLDG
1	96-2176	05/01/1996	09/01/1996	5,000	Commercial	RENOVATIONS
1	96-2462	06/01/1996	09/01/1996	20,000	Commercial	RENOVATIONS
1	96-2702	07/01/1996	09/01/1996	30,000	Commercial	RENOVATIONS
1	96-2996	07/01/1996	09/01/1996	1,000	Commercial	FENCE
1	9602939	07/01/1996	09/01/1996	810,000	Commercial	RENOVATIONS
1	9603273	08/01/1996	09/01/1996	5,000	Commercial	PLUMBING
1	9603307	08/01/1996	09/01/1996	70,000	Commercial	PLUMBING
1	9603316	08/01/1996	09/01/1996	153,000	Commercial	ELECTRICAL
1	9603324	08/01/1996	09/01/1996	14,285	Commercial	FIRE ALARM
1	9603328	08/01/1996	09/01/1996	160,000	Commercial	MECHANICAL
1	9603355	08/01/1996	09/01/1996	5,935	Commercial	FIRE ALARM
1	9603404	08/01/1996	09/01/1996	2,500	Commercial	SIGN
1	9603430	08/01/1996	09/01/1996	17,163	Commercial	MECHANICAL
1	96-3461	08/01/1996	09/01/1996	2,300	Commercial	MECHANICAL
1	96-3489	08/01/1996	09/01/1996	15,000	Commercial	ELECTRICAL
1	96-3539	08/01/1996	09/01/1996	3,000	Commercial	MECHANICAL
1	97-0866	03/01/1997	07/01/1997	900	Commercial	PAINTING
1	97-1403	05/01/1997	07/01/1997	3,000	Commercial	SLAB FOR TRASH COMPACTOR
1	97-4358	12/31/1997	01/01/1999	10,500	Commercial	INSTALL SWITCH & GENERATO
1	98-0217	01/27/1998	01/01/1999	3,000	Commercial	INSTALL DIESAL TANK
1	97-0866	06/29/1998	01/01/1999	900	Commercial	REPAINT DECK
1	98-2089	07/07/1998	01/01/1999	6,000	Commercial	WHITE PICKET FENCE
1	00-0382	02/14/2000	11/01/2000	43,027	Commercial	NEW ROOF
1	00-2259	08/18/2000	11/01/2000	39,000	Commercial	PAINT OUTSIDE
1	04-0558	03/11/2004	10/04/2004	2,400	Commercial	INSTALL DRAINS
1	05-2805	07/06/2005	12/31/2005	2,000	Commercial	INSTALL ELECTRIC FOR C.U.'S
1	05-3151	07/28/2005	12/31/2005	8,000	Commercial	REPLACE EXISTING 20 TON C/U WITH EQUAL PER HARC
1	06-6363	11/28/2006	03/08/2007	42,000	Commercial	REPLACE 4 A/C UNITS 10 TON

Parcel Value History

Certified Roll Values.

[View Taxes for this Parcel.](#)

Roll Year	Total Bldg Value	Total Misc Improvement Value	Total Land Value	Total Just (Market) Value	Total Assessed Value	School Exempt Value	School Taxable Value
2013	1,566,494	14,264	1,964,772	3,545,530	3,545,530	0	3,545,530
2012	1,595,880	14,772	1,964,772	3,575,424	3,575,424	0	3,575,424
2011	1,595,880	15,316	1,964,772	3,575,968	3,575,968	0	3,575,968
2010	1,664,258	15,814	1,998,415	3,678,487	3,678,487	0	3,678,487
2009	1,664,258	16,323	2,555,523	4,236,104	4,236,104	0	4,236,104
2008	1,690,253	16,865	2,691,468	4,760,564	4,760,564	0	4,760,564
2007	1,221,832	17,355	2,691,468	4,760,564	4,760,564	0	4,760,564

2006	1,346,657	17,863	1,552,770	4,760,564	4,760,564	0	4,760,564
2005	1,372,264	18,406	1,293,975	4,560,564	4,560,564	0	4,560,564
2004	1,382,498	18,903	1,086,939	4,560,564	4,560,564	0	4,560,564
2003	1,382,498	19,412	1,069,686	4,560,564	4,560,564	0	4,560,564
2002	1,210,176	19,955	1,069,686	4,343,394	4,343,394	0	4,343,394
2001	1,210,176	20,455	1,069,686	4,343,394	4,343,394	0	4,343,394
2000	1,254,847	6,803	897,156	4,343,394	4,343,394	0	4,343,394
1999	1,386,178	6,986	897,156	4,343,394	4,343,394	0	4,343,394
1998	924,218	6,451	897,156	1,970,016	1,970,016	0	1,970,016
1997	924,218	5,281	862,650	1,970,016	1,970,016	0	1,970,016
1996	827,103	4,383	862,650	1,326,392	1,326,392	0	1,326,392
1995	344,572	0	862,650	1,326,392	1,326,392	0	1,326,392
1994	372,633	0	862,650	1,256,582	1,256,582	0	1,256,582
1993	372,633	0	862,650	1,235,283	1,235,283	0	1,235,283
1992	372,633	0	862,650	1,235,283	1,235,283	0	1,235,283
1991	372,633	0	862,650	1,235,283	1,235,283	0	1,235,283
1990	329,114	0	694,433	1,023,547	1,023,547	0	1,023,547
1989	317,942	0	690,120	1,008,062	1,008,062	0	1,008,062
1988	294,685	0	552,096	846,781	846,781	0	846,781
1987	325,913	0	317,024	642,937	642,937	0	642,937
1986	327,136	0	310,554	637,690	637,690	0	637,690
1985	321,410	0	186,332	507,742	507,742	0	507,742
1984	317,843	0	186,332	504,175	504,175	423,507	80,668
1983	317,843	0	120,771	438,614	438,614	368,435	70,179
1982	232,196	0	109,556	341,752	341,752	269,984	71,768

Parcel Sales History

NOTE: Sales do not generally show up in our computer system until about two to three months after the date of sale. If a recent sale does not show up in this list, please allow more time for the sale record to be processed. Thank you for your patience and understanding.

Sale Date	Official Records Book/Page	Price	Instrument	Qualification
12/1/1994	1334 / 0606	1,100,000	WD	U
3/1/1987	1004 / 635	750,000	WD	U
8/1/1984	920 / 836	475,000	WD	Q

This page has been visited 134,189 times.

Monroe County Monroe County Property Appraiser
 Scott P. Russell, CFA
 P.O. Box 1176 Key West, FL 33041-1176