

1	DD Set	08.25.2021
---	--------	------------

7

PLOTTED:
8/25/2021 9:21:25 AM

Drawn By: NM	Checked By: FHR
-----------------	--------------------

ARCHITECTURAL SITE
PLAN

-
- A close-up photograph of a stone wall. The stones are rectangular and arranged in a regular grid pattern, separated by thick, light-colored mortar joints. The stones themselves have a mottled, greyish-brown appearance with some darker spots and textures. The lighting is even, highlighting the texture of the stone and the mortar.

-

-
- A photograph of a tropical garden. In the foreground, there are several agave plants with long, pointed leaves, some with white variegation. A path made of light-colored, rounded stones winds through the garden. The background is filled with a dense collection of palm trees, including tall, slender ones and shorter, more robust ones. The garden is bordered by a light-colored wall on the right side.

-

-

-

-

-

-

-
- © 2015 Pam Perick

-
- The top photograph shows a large, rectangular stone marker for 'Elihu Thomson'. The marker is made of light-colored stone and has a dark plaque with gold lettering. The plaque contains the following text: 'Elihu Thomson' in large letters, followed by 'Born May 18, 1829, in the town of Andover, New Hampshire. He was educated at the Andover Academy and at the University of Cambridge, Massachusetts. He was a member of the American Academy of Arts and Sciences and the National Academy of Sciences. He was a prominent engineer and inventor, and was one of the founders of the American Society of Mechanical Engineers. He died May 18, 1907, in the town of Andover, New Hampshire. His remains are interred in the Andover Cemetery.' Below the text is a small illustration of a building. The bottom photograph shows a smaller, rectangular stone marker for 'Elihu Thomson'. The marker is made of light-colored stone and has a dark plaque with gold lettering. The plaque contains the following text: 'Elihu Thomson' in large letters, followed by 'Born May 18, 1829, in the town of Andover, New Hampshire. He was educated at the Andover Academy and at the University of Cambridge, Massachusetts. He was a member of the American Academy of Arts and Sciences and the National Academy of Sciences. He was a prominent engineer and inventor, and was one of the founders of the American Society of Mechanical Engineers. He died May 18, 1907, in the town of Andover, New Hampshire. His remains are interred in the Andover Cemetery.' Below the text is a small illustration of a building.

SITE PLAN

SCALE: 1/16" = 1'-0"

NOT FOR CONSTRUCTION

[illegible]

613-631 GREENE ST. REDEVELOPMENT

Multiple, Greene Street, Key West, FL 33040

CITY OF KEY WEST

Enter Address Here

8/25/2021 9:21:34 AM

Project #
18174

Checked
EHP

FIRST FLOOR PLAN
Option A

A2.1.1A

©2021 by K2M Design, Inc.

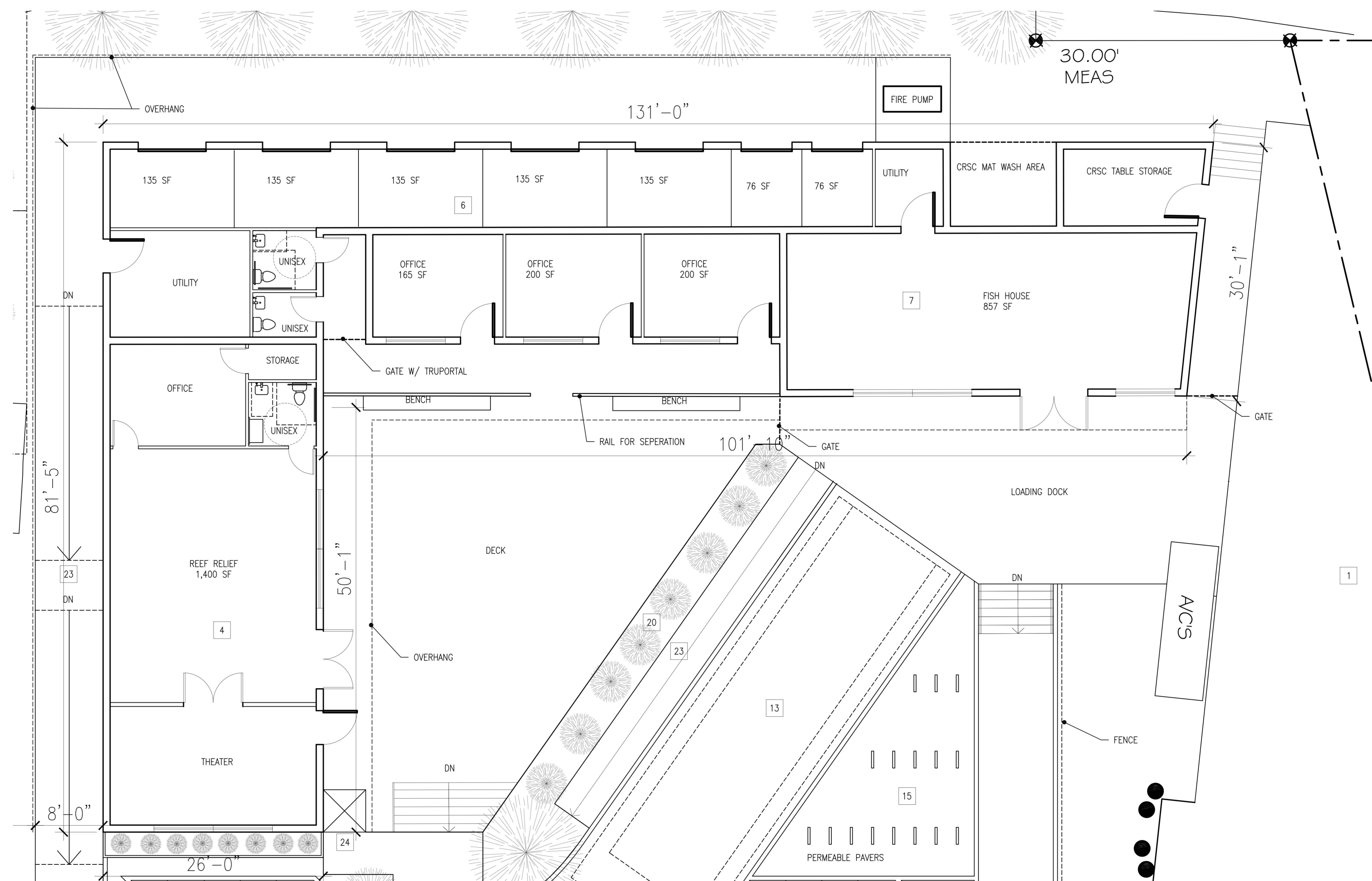
©2021 by K2M Design, Inc.

1. ALL DRIVE LANS 24" - 0"
2. ALL TURN RADII AT REQUIRED 25' MINIMUM FOR FIRE TRUCK REGULATIONS.
3. FENCING - COURTYARDS TO BE FENCED IN W/ ACCESS GATES PROVIDED OR ACCESS OPENINGS FOR PEDESTRIANS AT WALK LOCATIONS TO PREVENT CONFUSION W/ PARKING AREAS.
4. LOADING ZONE TO BE TREATED AS DELIVERY LOCATION ONLY, DURING HOURS OF NO ANTICIPATED DELIVERY, LOADING ZONE MAY BE USED AS PARKING FOR REEF RELIEF STAFF (2), CONCH REPUBLIC EMPLOYEES (2), AND STORAGE.
5. ACCESS (2)
6. HARK TRAPS 6,000 SF TO REMAIN UNPAVED, ADDITIONAL ROLLOVER PARKING TO BE PROVIDED IN FIRST 3,000 SF AT TIMES IS NOT PROVIDED FOR IN HIS LEASE.
7. SIDEWALK AT THE ROAD TO BE PAVED WITH HISTORIC BRICK.

1	CONCH REPUBLIC
2	HARVEY TRAPS (3000 SF)
3	HARVEY TRAPS (3000 ADDITIONAL SF)
4	REEF RELIEF
5	FURY TICKETING BOOTH + SHADED GATHERING AREA
6	STORAGE BUILDING
7	FISH HOUSE
9	LIFT STATION
10	TRANSFORMER PAD
11	WASTE MANAGEMENT LOCATION
12	COURTYARD
13	LOADING ZONE
14	PARKING
15	BIKE RACKS
16	SCOOTER PARKING
17	DRIVE LANE
18	FIRE DEPARTMENT CONNECTION/RPZ
19	ABANDONED CURB CUT
20	GREEN SPACE/LANDSCAPING
21	SIDEWALK/PATH
22	DELIVERY STAGING AREA
23	ADA RAMP
24	ADA LIFT

(46) STANDARD SPACES
(3) ADA SPACES
(14) SCOOTER SPACES

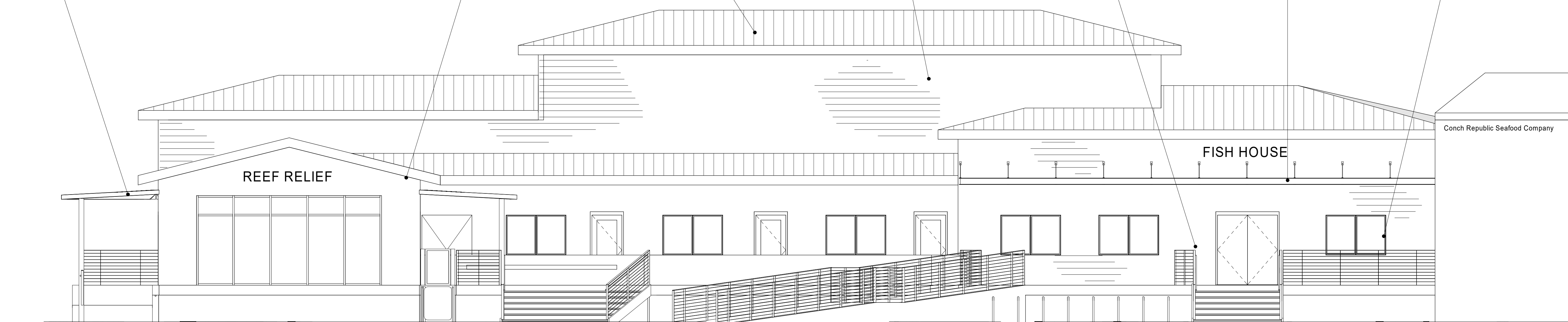
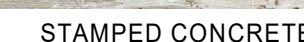
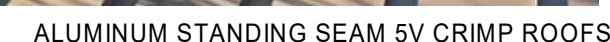
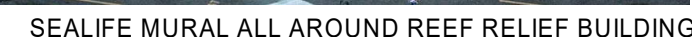
	SITE "A"	EXISTING
REEF RELIEF (OFFICE+STORAGE+ THEATER+BATHROOM)	1,381 NET SF	1,050 SF (+LOFT 250 SF)
FISH HOUSE	1,167 NET SF	967 SF
STORAGE	1,220 NET SF	2,600 SF (1,300 X 2)



1

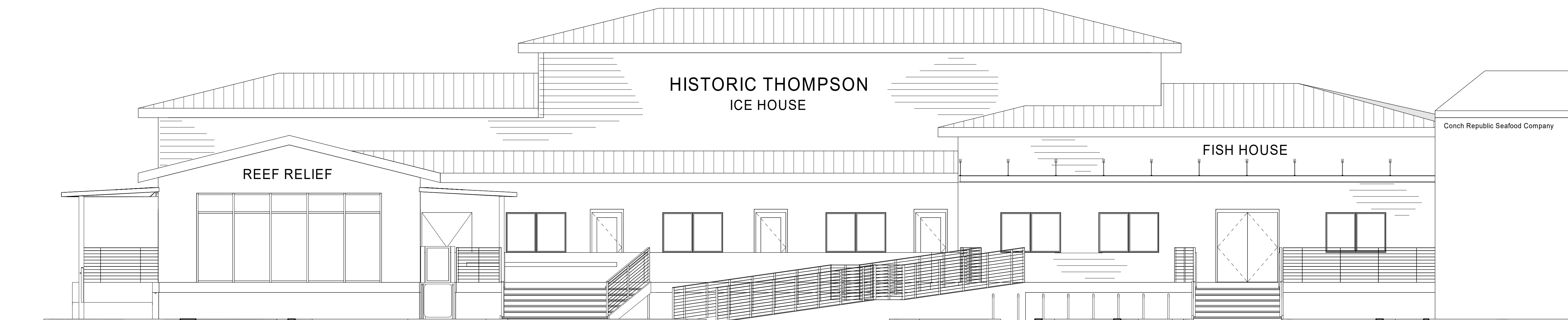
FLOOR PLAN - OPTION A

SCALE: 1/8" = 1'-0"



SOUTH ELEVATION -
OPTION A

SCALE: 3/16" = 1'-0"



SOUTH ELEVATION -
OPTION B

SCALE: 3/16" = 1'-0"