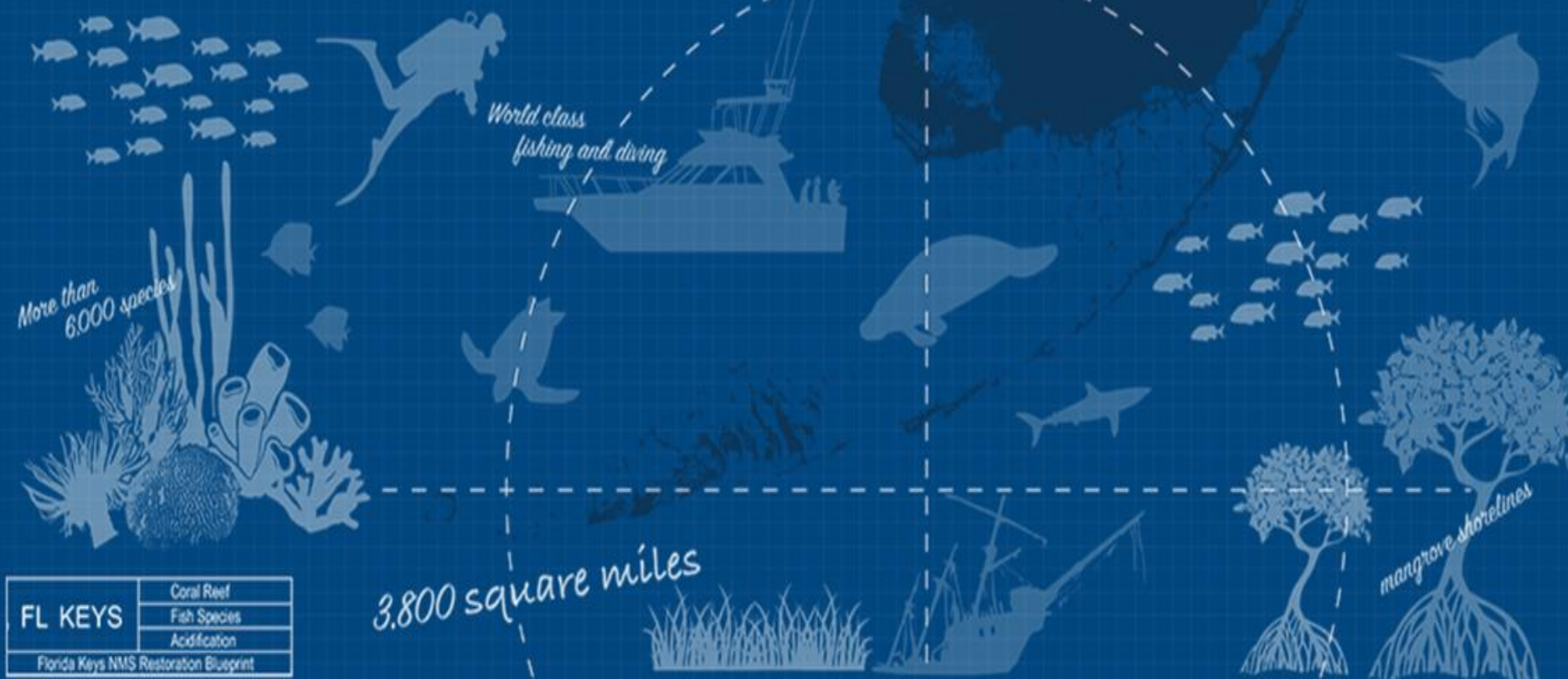




# FLORIDA KEYS NATIONAL MARINE SANCTUARY RESTORATION BLUEPRINT



FL KEYS	Coral Reef
	Fish Species
	Acidification
Florida Keys NMS Restoration Blueprint	

# Economic Impact of Visitors

A Healthy Florida Keys Ecosystem Provides:

**\$2.9 Billion**

in tourism spending\*

**44%**

of Jobs  
(Highest percentage in FL)\*\*

**60%**

of Monroe County economy\*\*



\*Gazal, Andrew & Burns/2021

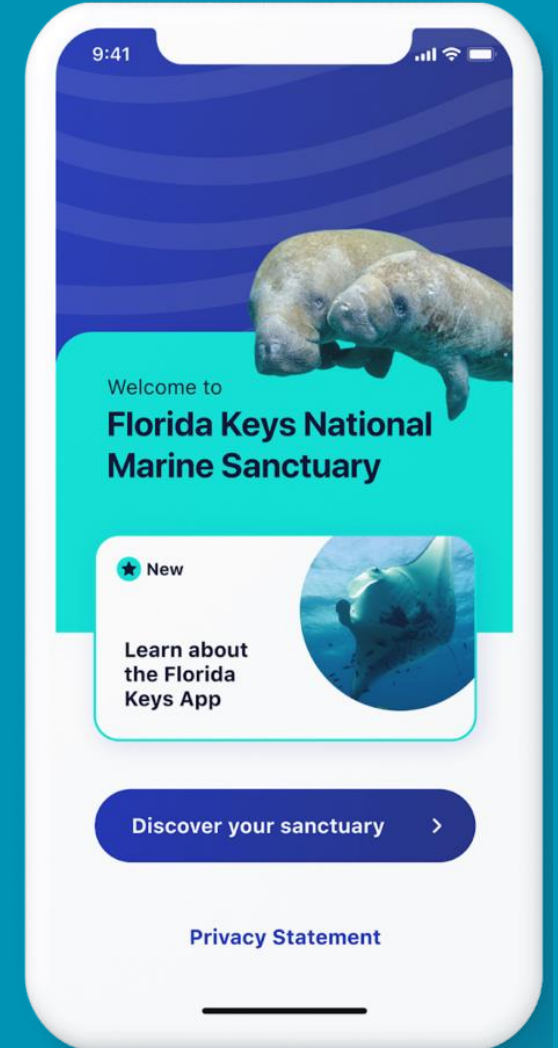
\*\*TBD Economics/2019



# **NATURAL RESOURCES IN THE FLORIDA KEYS**

The Future of the Keys Marine Environment is at Risk

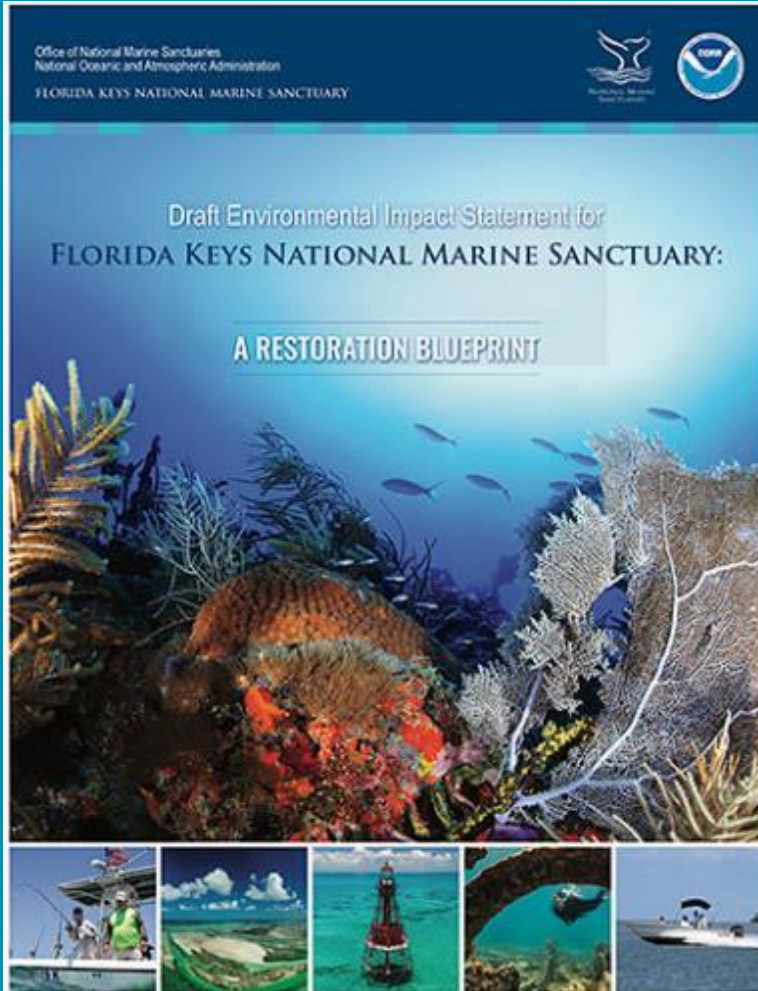
# Local Action to Enhance Resilience





FLORIDA KEYS  
NATIONAL MARINE  
SANCTUARY

# Notice of Proposed Rulemaking



Proposed regulations for:

- Sanctuary boundary
- Sanctuary-wide regulations
- Marine zones & zone-specific regulations

Proposed Rule is informed by:

- Public and agency comment
- Updated socio-economic and environmental data

Pulls from all four alternatives included in the Draft Environmental Impact Statement

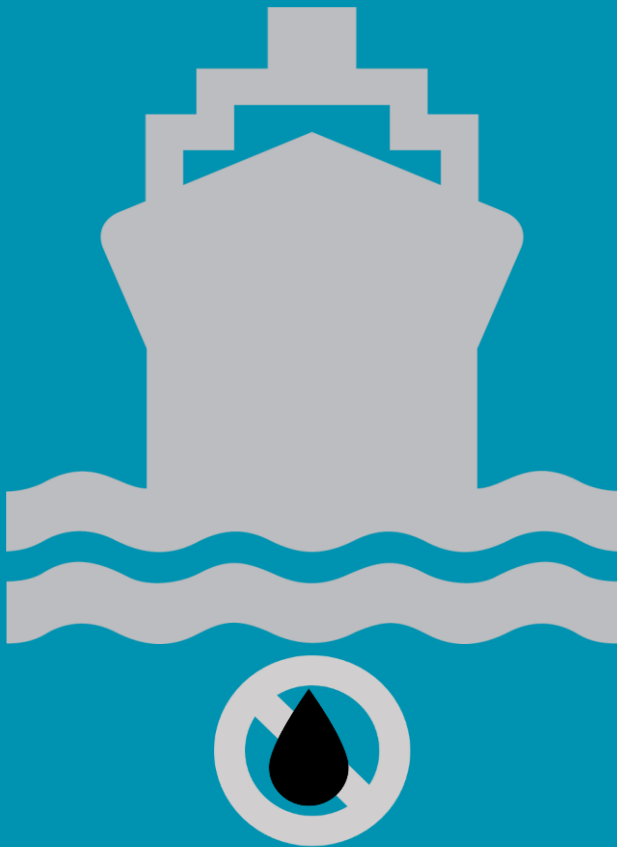
\*Management Plan is a separate document



FLORIDA KEYS  
NATIONAL MARINE  
SANCTUARY

# DISCHARGE

## *Protect Water Quality*



### Proposed regulation:

Prohibit all discharges except cooling water  
from cruise ships



FLORIDA KEYS  
NATIONAL MARINE  
SANCTUARY

# CONSERVATION AREAS

Modified:

**Western Sambo** (12.58 sq miles)



Proposed expansion

*Preserve Healthy Deep Reef Habitat*

Maps show  
existing and  
proposed rule.



FLORIDA KEYS  
NATIONAL MARINE  
SANCTUARY

# WILDLIFE MANAGEMENT AREAS

## Snipe Key: Modified (0.21 sq miles)



Existing

Proposed New

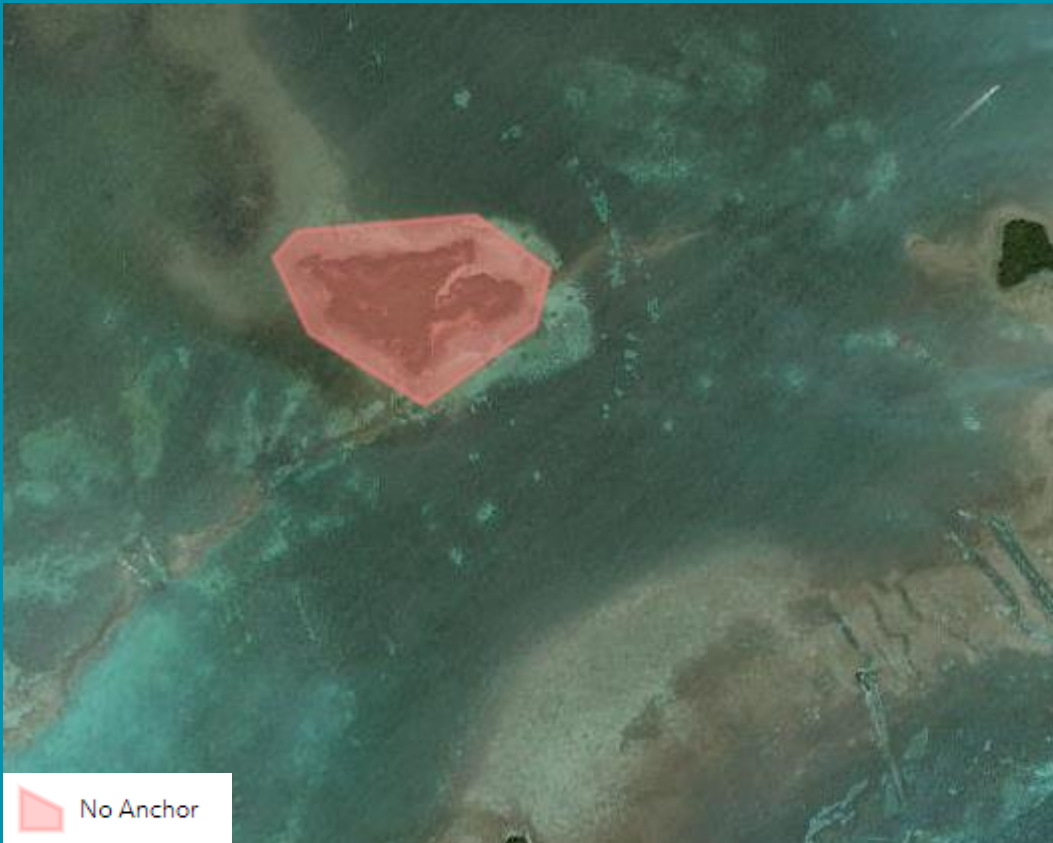
*Separate Boaters from  
Magnificent Frigatebird Habitat*



FLORIDA KEYS  
NATIONAL MARINE  
SANCTUARY

# WILDLIFE MANAGEMENT AREAS

## Archer Key: Proposed New (0.15 sq miles)



*Protect Seagrass, Soft  
Corals, & Sponges*



FLORIDA KEYS  
NATIONAL MARINE  
SANCTUARY

# WILDLIFE MANAGEMENT AREAS

## Ballast & Man Keys Flats: Proposed New (1.51 sq miles)



*Sustain Hardbottom Habitat &  
Decrease Disturbance to Threatened  
Sea Turtles*

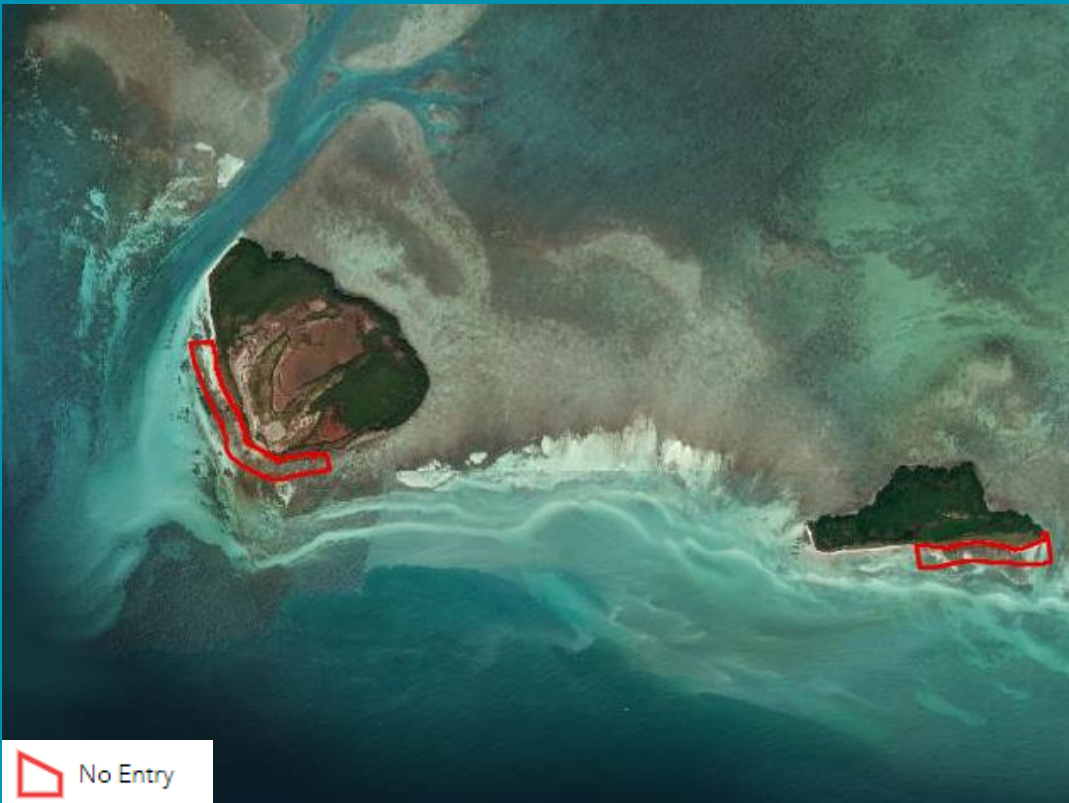


FLORIDA KEYS  
NATIONAL MARINE  
SANCTUARY

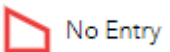
# WILDLIFE MANAGEMENT AREAS

**Modified:**

**Boca Grande** (0.04 sq miles) and **Woman Key** (0.02 sq miles)



*Safeguard Threatened  
Nesting Sea Turtles*



No Entry



FLORIDA KEYS  
NATIONAL MARINE  
SANCTUARY

# MOTORIZED PERSONAL WATERCRAFT

*Separate Conflicting Uses & Ensure Safety*

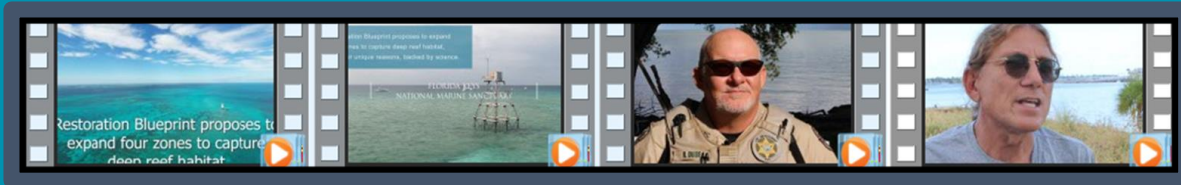




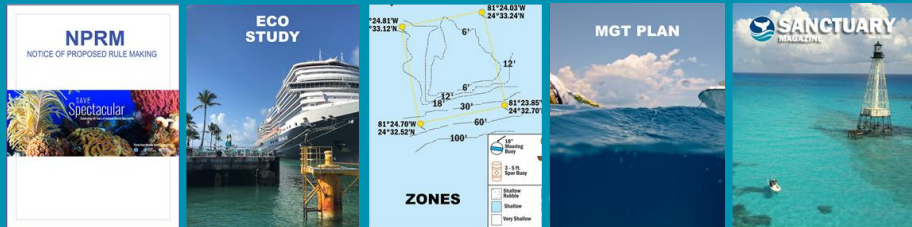
FLORIDA KEYS  
NATIONAL MARINE  
SANCTUARY

# Resources for public engagement

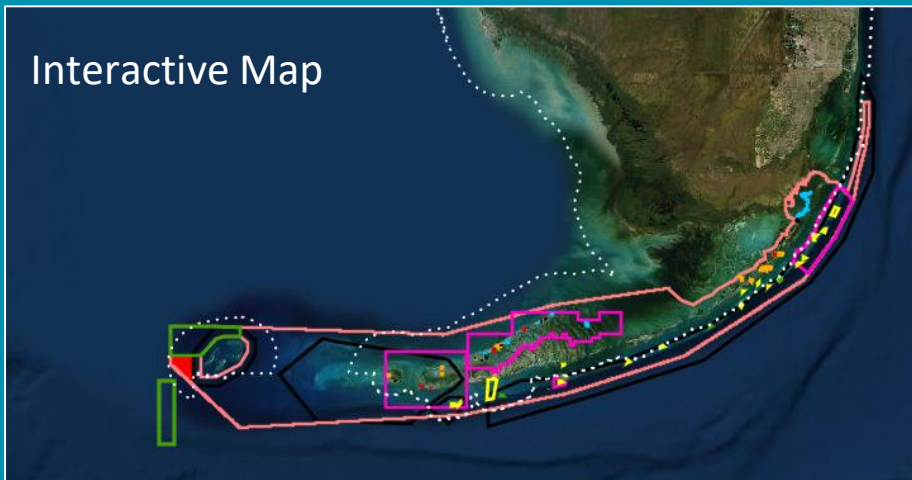
## Video Library



## Document Library



## Interactive Map



## Public Meeting Information & Registration Links

COMMENT  
NOW

## Summary Presentation



FLORIDA KEYS  
NATIONAL MARINE  
SANCTUARY

### Presentation Outline

- Why Create a Restoration Blueprint
- Restoration Blueprint timeline and status
- Proposed Rule highlights
  - Sanctuary boundary
  - Sanctuary-wide regulations
  - Marine zones & associated regulations
- Public outreach products and tools
- Next steps and how to stay engaged



Photo Credit: Catlin Seaview Survey

# Public Engagement Opportunities

## ASK QUESTIONS

August 16 - Virtual Q&A

## PUBLIC COMMENT

August 30 - Virtual Public Comment

September 20 - Key Largo - Key Largo Coral Shores High School Auditorium - 6 p.m.

September 21 - Marathon - Marathon High School Auditorium - 6 p.m.

September 22 - Key West - Key West High School Auditorium - 6 p.m.

October 18 - Sanctuary Advisory Council Meeting, 9 a.m., Marathon



Photo Credit: Jack Fishman



**FLORIDA KEYS**  
NATIONAL MARINE SANCTUARY



**FLORIDA KEYS**  
NATIONAL MARINE SANCTUARY



# Sarah Fangman

Florida Keys National Marine Sanctuary

33 Quay Drive

Key West, FL 33040

Email: [Sarah.Fangman@noaa.gov](mailto:Sarah.Fangman@noaa.gov)

[FloridaKeys.noaa.gov](http://FloridaKeys.noaa.gov)

# EXTRA SLIDES



**FLORIDA KEYS**  
NATIONAL MARINE SANCTUARY



FLORIDA KEYS  
NATIONAL MARINE  
SANCTUARY

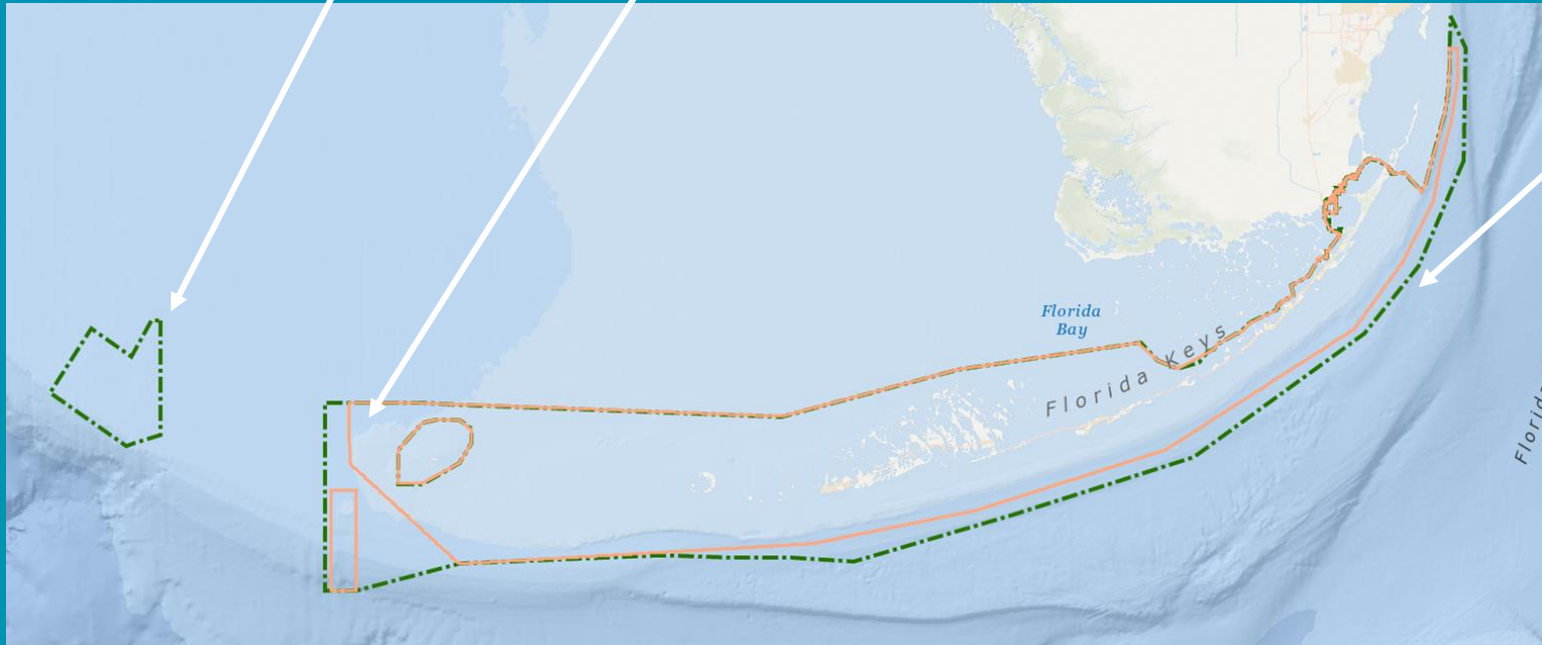
# Sanctuary Boundary: Proposed Expansion

Nationally Significant - Pulley Ridge

Connectivity - Tortugas Region

*Connect & Preserve Special Habitats*

**Consistent regulation** - Expand boundary to include areas already closed to large vessel traffic



Existing: 3,800 sq miles



Proposed: 4,800 sq miles

# Sanctuary-wide Regulations

- Discharge
- Temporary Regulation for Emergency & Adaptive Management
- Historical Resources Permitting
- Fish Feeding
- Deserted Vessels, Harmful Matter, & Vessel Salvage
- Mooring Buoys



FLORIDA KEYS  
NATIONAL MARINE SANCTUARY



FLORIDA KEYS  
NATIONAL MARINE  
SANCTUARY

# DESERTED VESSELS & HARMFUL MATTER

## *Protect Seafloor Habitats & Water Quality*

### Proposed regulation:

- Prohibit anchoring, mooring, or occupying vessels at risk of becoming derelict, or deserting vessels aground, at anchor, or adrift
- Prohibit leaving harmful matter aboard a grounded or deserted vessel





FLORIDA KEYS  
NATIONAL MARINE  
SANCTUARY

# VESSEL GROUNDING & SALVAGE

## *Coordinated Response*

### Proposed regulation:

- Requires notice of grounding within 24 hours & salvage plan within 72 hours
- Timeframes consistent with state rules





FLORIDA KEYS  
NATIONAL MARINE  
SANCTUARY

# SANCTUARY PRESERVATION AREAS

*Separate Conflicting Uses, Protect Habitats, Create Consistency*

## 17 SPAs:

- 2 new
- Combine 2 existing
- Eliminate 2 existing



## Prohibit:

- Discharge
- Fishing or taking marine life
- Anchoring



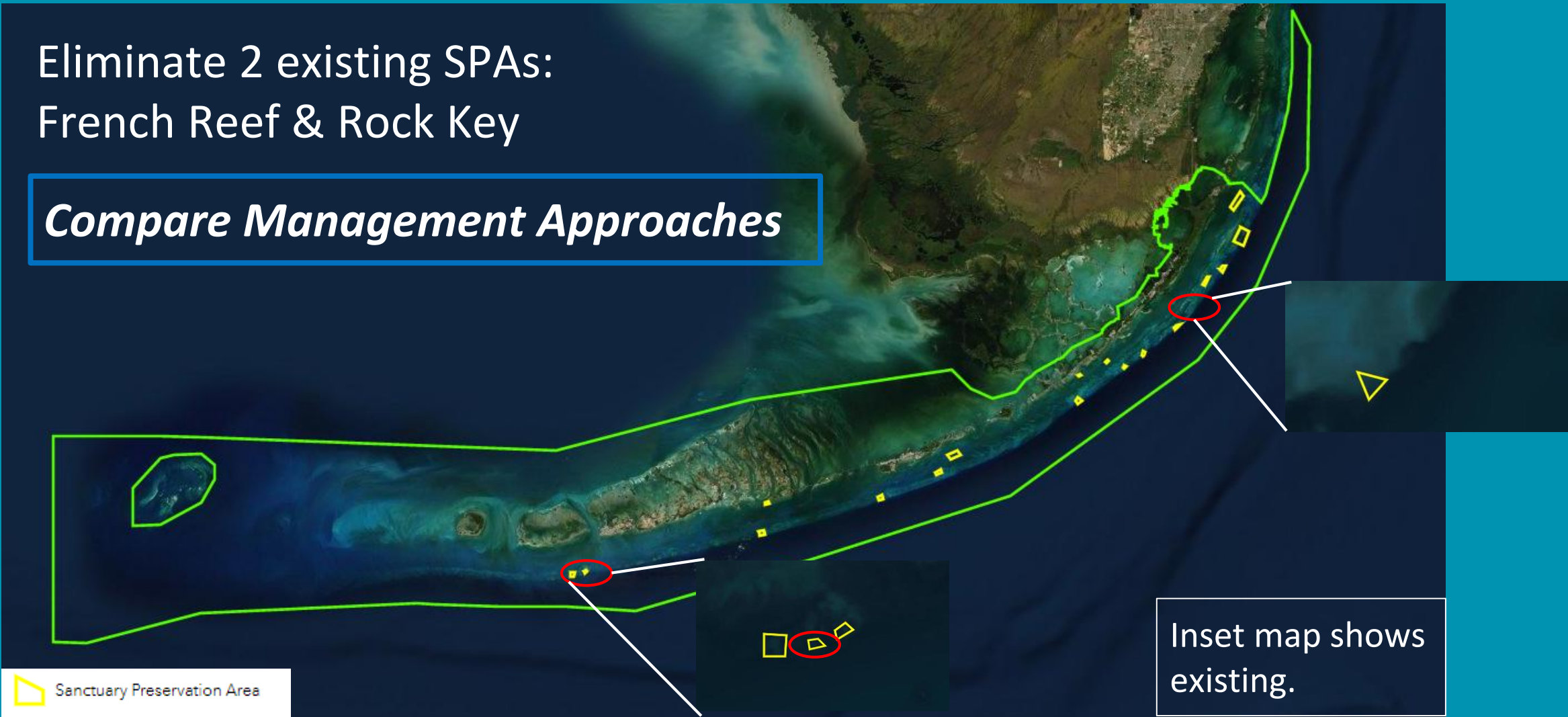


FLORIDA KEYS  
NATIONAL MARINE  
SANCTUARY

# SANCTUARY PRESERVATION AREAS

Eliminate 2 existing SPAs:  
French Reef & Rock Key

*Compare Management Approaches*





# WILDLIFE MANAGEMENT AREAS

## *Protect & Minimize Wildlife Disturbance*

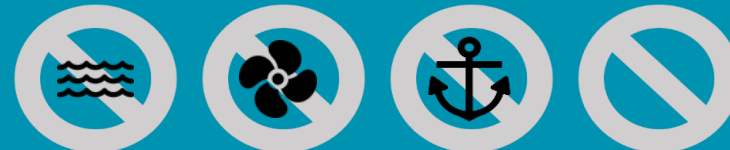
### Wildlife Management Areas

#### 47 Wildlife Management Areas

- 23 proposed new
- 2 existing combined into one
- 2 existing proposed eliminated

#### Regulations vary:

- Access and use restrictions address location-specific resource goals
  - Idle speed no wake
  - No motor
  - No anchor
  - No entry

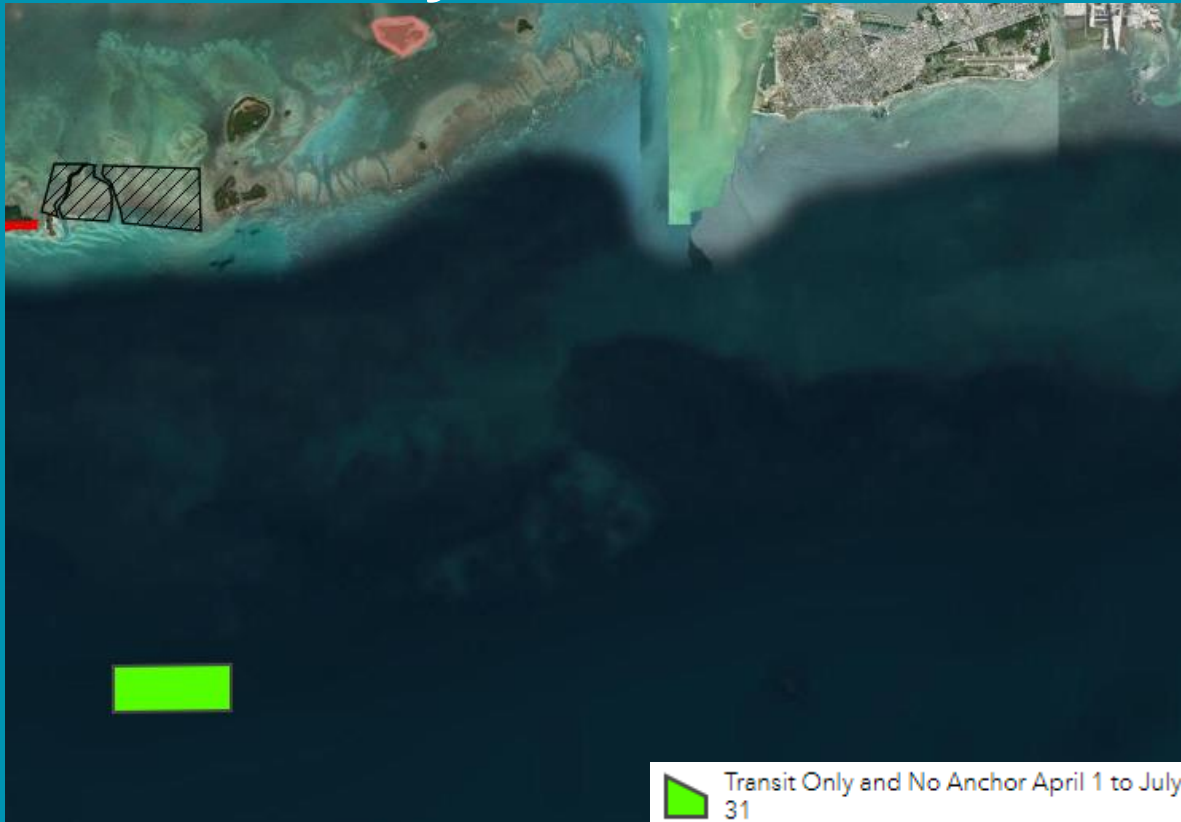




FLORIDA KEYS  
NATIONAL MARINE  
SANCTUARY

# WILDLIFE MANAGEMENT AREAS

## Proposed New: Western Dry Rocks (0.98 sq miles)



*Protect Fish Spawning  
Aggregations & Deep  
Reef Habitat*



Aligns sanctuary & state  
regulations



FLORIDA KEYS  
NATIONAL MARINE  
SANCTUARY

# CONSERVATION AREAS

## *Protect Contiguous, Diverse Habitats & Facilitate Research*

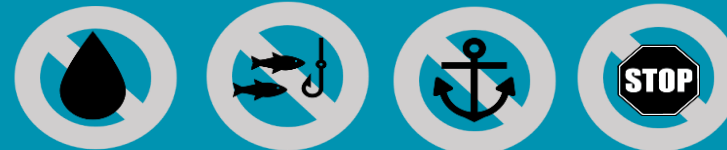
### 6 Conservation Areas:

- All existing
- Eliminate Looe Key Special Use Area



### Prohibit:

- Discharge
- Fishing or taking marine life
- Anchoring, *except* in Western Sambo shoreward of reef line
- Entering except for continuous transit; stopping in Western Sambo is *allowed*





FLORIDA KEYS  
NATIONAL MARINE  
SANCTUARY

# RESTORATION AREAS

## *Protect Nurseries & Facilitate Restoration*

Proposed new zone type

Create a restoration permit category



### 4 Habitat Restoration Areas

- Same as SPAs - no discharge, no take, no anchor



### 9 Nursery Restoration Areas

- Same as SPAs + transit only

