

STAFF REPORT

DATE: January 5, 2023

RE: 400-900 block United Street ROW
(permit application # T2022-0440)

FROM: Karen DeMaria, City of Key West Urban Forestry Manager

An application was received requesting the removal of 1-Strangler Fig (#6A), 1-Silver Buttonwood (#24), 2-Green Buttonwood (#26 & #27), 1-Jamaican Dogwood (#66A), 2-Spanish Lime (#66B & #69A), & 1-Royal Poinciana (#68). A recent site visit documented that the young Strangler Fig tree (#6A) no longer exists on the site.

Transplantation of 1-Bahama Tabebuia (#16) & 1-Yellow Tabebuia (#19), 3-Alexander Palms & 9-Christmas Palms (#29, #30, #38A, #38B, #49, #50, #51, #52, & #53)

Removal of 3-Alexander Palms & 9-Christmas Palms (#29, #30, #38A, #38B, #49, #50, #51, #52, & #53)

Tree Species: Silver Buttonwood #24 (*Conocarpus erectus*)



Photo of whole tree showing location, view 1.



Photo of trunk and canopy branches.



Photo of whole tree, view 2.

Diameter: 18"

Location: 80% (sidewalk planter tree)

Species: 100% (on protected tree list)

Condition: 40% (overall condition is poor, growth lean toward parking and street, large limb rip in canopy. Larger tree used to be close to this tree which impacted its growth.)

Total Average Value = 73%

Value x Diameter = 13.1 replacement caliper inches

Tree Species: Green Buttonwood (*Conocarpus erectus*)



Photo of whole tree showing location.



Photo of tree trunk and main canopy branches near utility pole, view 1.



Photo of
tree
canopy.



Photo of
base of
tree



Photo of tree trunk and main canopy branches near utility pole, view 2.

Tree #26-Diameter: 13.9"

Location: 40% (sidewalk planter tree, root system and branches enveloping electric pole)

Species: 100% (on protected tree list)

Condition: 60% (overall condition is fair, old wound in main trunk.)

Total Average Value = 66%

Value x Diameter = 9.1 replacement caliper inches



Photo of whole tree showing location.



Photo of
tree
canopy.



Photo of
base of
tree.



Photo of main canopy branches.



Photo of base
and trunk of
tree.

Tree #27-Diameter: 15.9"

Location: 80% (sidewalk planter tree)

Species: 100% (on protected tree list)

Condition: 60% (overall condition is fair.)

Total Average Value = 80%

Value x Diameter = 12.7 replacement caliper inches



Trees 66 A & B

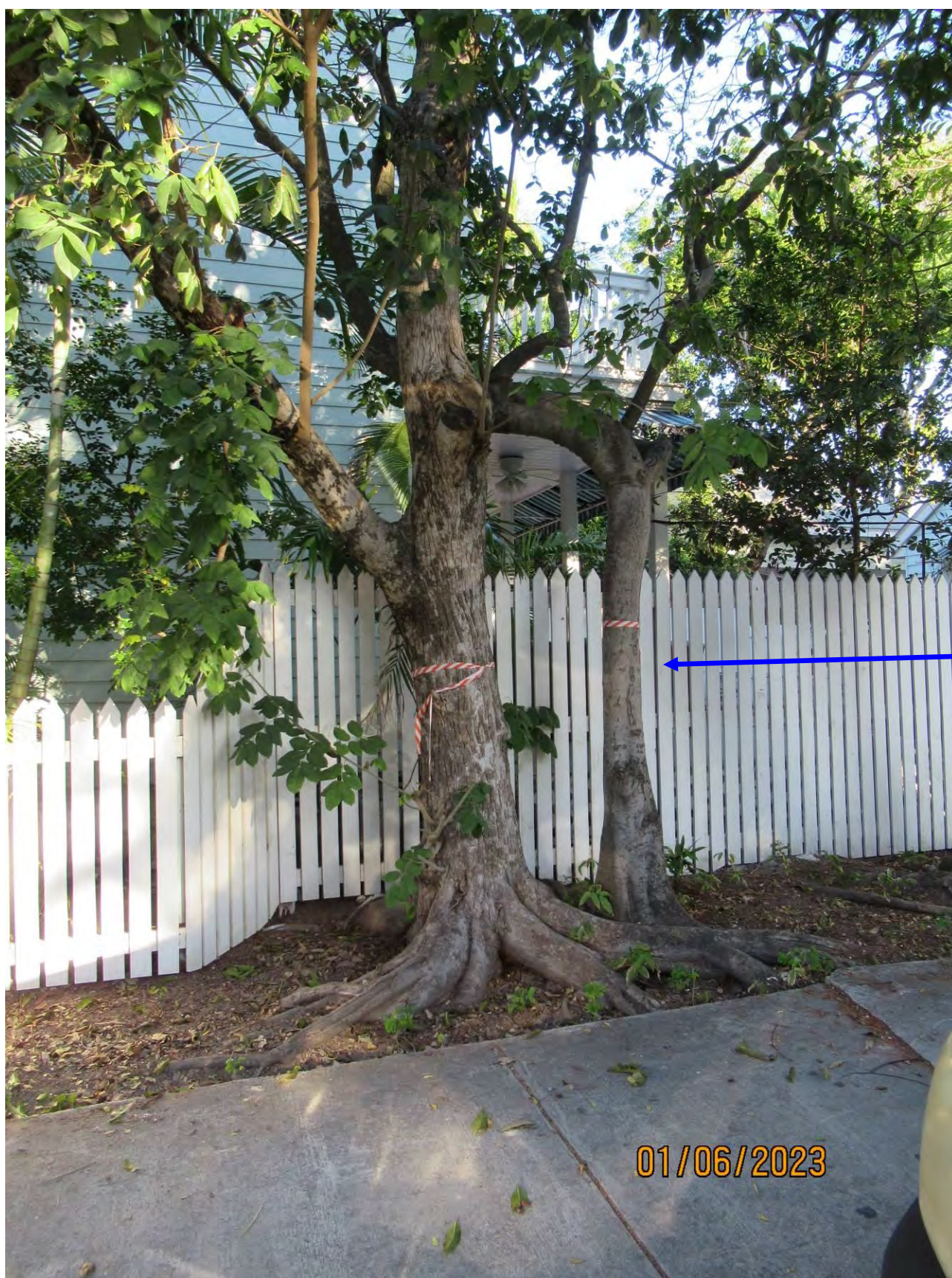
Tree
#67

Tree #68

Tree #69A

Note: Tree #67 is a Woman's Tongue tree <24" diameter therefore, it is not regulated and no permit is needed to remove it.

Tree Species: Jamaican Dogwood #66A (*Piscidia piscipula*)



Tree
#66B

01/06/2023

Photo showing location and base of trees.



Tree
photos
showing
the tree
canopies
of tree
#66A and
66B



Photo showing the trunks of the trees.

Diameter: 16.3"

Location: 40% (sidewalk tree, impacts to sidewalk at base of tree, canopy in utility lines and over private property.)

Species: 100% (on protected tree list)

Condition: 40% (overall condition is poor, old, improper trimming to numerous canopy branches including utility cuts, canopy branch tears.)

Total Average Value = 60%

Value x Diameter = 9.7 replacement caliper inches

Tree Species: Spanish Lime (*Melicoccus bijugatus*)



Photo showing the base of the trees.



Photo showing trunk of tree, view 1.



Photo showing
trunk of tree,
view 2.

Tree #66B-Diameter: 7.8"

Location: 40% (sidewalk tree, growing in root system of J. Dogwood, canopy in utility lines.)

Species: 100% (on protected tree list)

Condition: 50% (overall condition is poor, poor canopy structure.)

Total Average Value = 63%

Value x Diameter = 4.9 replacement caliper inches



Two street
views of
tree.





Photo of base
and trunk of
tree.

Tree #69A-Diameter: 16.7"

Location: 60% (sidewalk tree, canopy in utility lines)

Species: 100% (on protected tree list)

Condition: 40% (overall condition is poor, codominant trunks, included bark, growth lean over sidewalk and road.)

Total Average Value = 66%

Value x Diameter = 11 replacement caliper inches

Tree Species: Royal Poinciana #68 (*Delonix regia*)



Photo of
base of tree.



Photo of
trunk and
main
canopy
branches.



Photo of
tree
canopy.



Photo of
tree trunk.

Diameter: 15.9"

Location: 60% (sidewalk tree, canopy in utility lines)

Species: 100% (on protected tree list)

Condition: 40% (overall condition is poor, large decay wound in main trunk, port structure.)

Total Average Value = 66%

Value x Diameter = 10.4 replacement caliper inches

Total required replacement if all trees removed:

Silver Buttwood #24: 13.1"

Green Buttonwood #26: 9.1"

Green Buttwood #27: 12.7"

Jamaican Dogwood #66A: 9.7"

Spanish Lime #66B: 4.9"

Spanish Lime #69A: 11.0"

Royal Poinciana #68: 10.4"

Total = 70.9"

United Street Improvements

Tree Well Number	Tree Replacement	Common Name	Size
1	Thrinax radiata	Thatch Palm	8' wood
2	Swietenia mahogani	Mahogany Tree	65 gal. 2"-4" cal.
3	Swietenia mahogani	Mahogany Tree	65 gal. 2"-4" cal.
4	Tabebuia aurea	Trumpet Tree	65 gal. 2"-4" cal.
5	Capparis cynophallophora	Jamaican Caper	65 gal. 2"-4" cal.
6	Thrinax radiata	Thatch Palm	8' wood
7	Thrinax radiata	Thatch Palm	8' wood
8	Swietenia mahogani	Mahogany Tree	65 gal. 2"-4" cal.
9	Capparis cynophallophora	Jamaican Caper	65 gal. 2"-4" cal.
10	Tabebuia aurea	Trumpet Tree	65 gal. 2"-4" cal.
11	Tabebuia aurea	Trumpet Tree	65 gal. 2"-4" cal.
12	Chrysophllum oliviforme	Satin Leaf	65 gal. 2"-4" cal.
13	Tabebuia aurea	Trumpet Tree	65 gal. 2"-4" cal.
14	Swietenia mahogani	Mahogany Tree	65 gal. 2"-4" cal.
15	Swietenia mahogani	Mahogany Tree	65 gal. 2"-4" cal.
16	Conocarpus erectus	Green Buttonwood	65 gal. 2"-4" cal.
17	Conocarp. erectus sericeus	Silver Buttonwood	65 gal. 2"-4" cal.
18	Bursera simaruba	Gumbo Limbo	65 gal. 2"-4" cal.
19	Conocarpus erectus	Green Buttonwood	65 gal. 2"-4" cal.
20	Conocarpus erectus	Green Buttonwood	65 gal. 2"-4" cal.
21	Bursera simaruba	Gumbo Limbo	65 gal. 2"-4" cal.
22	Capparis cynophallophora	Jamaican Caper	65 gal. 2"-4" cal.
23	Tabebuia aurea	Trumpet Tree	65 gal. 2"-4" cal.
24	Ptychostem aeglegans/Adonidia merrillii	Alexander /Christmas Palm	8' wood
25	Ptychostem aeglegans/Adonidia merrillii	Alexander /Christmas Palm	8' wood
26	Exist. To Remain	Green Buttonwood	
27	Ptychostem aeglegans/Adonidia merrillii	Alexander /Christmas Palm	8' wood
28	Ptychostem aeglegans/Adonidia merrillii	Alexander /Christmas Palm	8' wood
29	Bursera simaruba	Gumbo Limbo	65 gal. 2"-4" cal.
30	Bursera simaruba	Gumbo Limbo	65 gal. 2"-4" cal.
31	Bursera simaruba	Gumbo Limbo	66 gal. 2"-4" cal.
33	Chrysophllum oliviforme	Satin Leaf	65 gal. 2"-4" cal.
34	Eugenia rhombea	Red Stopper	65 gal. 2"-4" cal.
35	Eugenia rhombea	Red Stopper	65 gal. 2"-4" cal.
36	Chrysophllum oliviforme	Satin Leaf	65 gal. 2"-4" cal.
37	Cassia javanica	Apple Blossom Tree	65 gal. 2"-4" cal.
38	Tabebuia aurea	Trumpet Tree	65 gal. 2"-4" cal.
39	Cassia Bakeri	Pink Shower Tree	65 gal. 2"-4" cal.
40	Cassia Fistula	Golden Shower	65 gal. 2"-4" cal.
41	Conocarpus erectus	Green Buttonwood	65 gal. 2"-4" cal.
42	Conocarpus erectus	Green Buttonwood	65 gal. 2"-4" cal.
43	Eugenia rhombea	Red Stopper	65 gal. 2"-4" cal.
44	Chrysophllum oliviforme	Satin Leaf	65 gal. 2"-4" cal.

United Street Improvements

Tree Well Number	Tree Replacement	Common Name	Size
45	Chrysophllum oliviforme	Satin Leaf	65 gal. 2"-4" cal.
46	Eugenia rhombea	Red Stopper	65 gal. 2"-4" cal.
47	Thrinax radiata	Thatch Palm	8' wood
48	Cassia Bakeri	Pink Shower Tree	65 gal. 2"-4" cal.
49	Cassia Fistula	Golden Shower	65 gal. 2"-4" cal.
50	Eugenia rhombea	Red Stopper	65 gal. 2"-4" cal.
51	Chrysophllum oliviforme	Satin Leaf	65 gal. 2"-4" cal.
52	Exist. To Remain	Yellow Tabebuia	
53	Exist. To Remain	Silver Buttonwood	
54	Exist. To Remain	Silver Buttonwood	
55	Exist. To Remain	Silver Buttonwood	
56	Exist. To Remain	Silver Buttonwood	
57	Exist. To Remain	Silver Buttonwood	
58	Exist. To Remain	Silver Buttonwood	
59	Exist. To Remain	Silver Buttonwood	
60	Exist. To Remain	Silver Buttonwood	
61	Exist. To Remain	Christmas Palm w/shrubs	
62	Exist. To Remain	Christmas Palms	
*	CITY OF KEY WEST URBAN FORESTRY MANAGER MUST BE CONTACTED TO		
	DETERMINE SUITABLE REPLACEMENTS FOR ANY PLANT SPECIES NOT AVAILABLE.		

Cynthia's Blue Palms, LLC

August 18, 2022

Prepared for:

City of Key West/Engineering/Urban Forestry

United Street Corridor

Tree Inventory

Scope of work: Identify plants on city rights-of-ways on United Street between Whitehead Street and Packer Street for redesign. Identify trees, palms and shrubs for diameter, height and current condition.

#1. *Swietenia mahogani*, Mahogany dia. 31.5", h40'-50' x w30'-40', Fair condition, Remain. Growing on military property.

#2. *Thrinax radiata*, Green Thatch Palm 7' g.w., Good condition, Remain or Transplant. Scars from machete frond removal.

#3. *Swietenia mahogani*, Mahogany dia. 33.5", VERY POOR condition, Remain if 2 limbs over street and sidewalk are removed and remaining limb reduced.

#4. *Swietenia mahogani*, Mahogany dia. 47.5", h 40'-50' x w55'65', Fair, Remain. Tree flushing, branches growing over 2 two storied houses.

#5. *Chamaerops humilis*, European Fan Palm, 5'.5", Good, Transplant.

#6a. *Ficus aurea*, Strangler Fig dia. 3"-4", 10', Poor, Remove.

#6b. *Cocos nucifera*, Coconut Palm 12'-14' o. a., Good, Transplant.

#7. *Thrinax radiata*, Green Thatch Palm 10'-12' o.a., 7' g.w., Good, Remain or Transplant

#8. *Ptychosterma elegans*, Alexander Palm 20'-25', Fair, Remove. Growing in utility wires.

#9. *Ptychosterma elegans*, Alexander Palm 20'-25', Poor, Remove. Pencil Top growth and in utility wires.

#10. *Ptychosterma elegans*, Alexander Palm 20'-25', Fair, Remove. Growing in utility wires.

- #11. *Thrinax radiata*, Green Thatch Palm 25' o.a. 20' g.w., Remain or Transplant
- #12. *Cocos nucifera*, Coconut Palm 7' o.a., Transplant
- #13. *Adonidia merrillii*, Christmas Palm dbl. 9'-10' g.w., Remain or Transplant. Insect infestation.
- #14. *Tabebuia bahamensis*, Bahama Tabebuia dia. 2.9", 18'-20' o.a. Good, Remain or Transplant. Plant growing in utility wires.
- #15. *Thrinax radiata*, Green Thatch Palm 6' g.w., 10'-12' o.a. Good, Remain or Transplant.
- #16. *Tabebuia bahamensis*, Bahama Tabebuia dia. 3.2", Good, Remain or Transplant. Plant growing in utility wire.
- #17. *Thrinax radiata*, Green Thatch 9' g.w., 10'-12' o.a., Good, Remain or Transplant.
- #18. *Bursera simaruba*, Gumbo Limbo dia. 3", 10'-12' o.a., Poor, Remove, diseased.
- #19. *Tabebuia aurea*, Yellow Tabebuia dia. 6.6", h15'-18'xw8'-10', Fair, Remain or Transplant
- #20. *Ptychosterma elegans*, Alexander Palm, 20'-25', Good, Remain. Appears to be growing on city property according to the plat map.
- #21. *Thrinax radiata*, Green Thatch Palm dbl., 15'-18', Good, Remain. Appears to be growing on city property according to the plat map.
- #22. *Ptychosterma elegans*, Alexander Palm triple, 15'-25', Good, Remain. Appears to be growing on city property according to the plat map.
- #23. *Conocarpus erectus* var. *Sericeus*, Silver Buttonwood dia. 33", h20'-25'xw30'-35', Fair, Remain. One-sided over parking and street-prune to balance. Roots lifting and cracking sidewalk.
- #24. *Conocarpus erectus* var. *Sericeus*, Silver Buttonwood dia 18", Poor, Remove. Canopy all growing eastward with trunk leaning north towards parking and street. Northwest side of tree has large limb rip-away.
- #25. *Tabebuia heterophylla*, Pink Tabebuia dia. 14.9", h20'-25'xw10'-12', Fair to Poor, Remove. Included bark of codominate branches. Invasive species and top of tree has tip and branch die-back.

#26. *Conocarpus erectus*, Green Buttonwood dia. 13.9", h20'-25'xw20'-25', Fair, Remove. Root system and branches encompass electric pole. Wound on North side of tree at approximately 8'-9'. All canopy over sidewalk and street.

#27. *Conocarpus erectus*, Green Buttonwood dia. 15.9", h15'-20'xw20'-25', Fair, Remain. Canopy over sidewalk and street. Trim to balance.

#28. *Tabebuia aurea*, Yellow Tabebuia dia. 12.7", h13'-15'xw12'-15', Fair, Remain. Trim for structure. Root system lifting curb, tree not centered in planting bed.

#29. *Adonidia merrillii*, Christmas Palm 18'-20', Poor, Remove. Pencil top.

#30. *Adonidia merrillii*, Christmas Palm 18'-20', Poor, Remove. Pencil top.

#31. *Bursera simaruba*, Gumbo Limbo PRIVATE PROPERTY TREE

#32. *Conocarpus erectus* var. *sericeus*, Silver Buttonwood dia. @ 1' 13.1", h12'-15'xw12'-15', Fair. Remain. Prune for balance and structure.

#33. *Conocarpus erectus* var. *sericeus*, Silver Buttonwood dia. 11.9", h10'-15'xw12'-15', Fair. Remain. Triple codominate at 2.5'-3', prune to reduce pressure on branch unions.

#34. *Conocarpus erectus* var. *sericeus*, Silver Buttonwood dia. 7.1", h10'-15'xw10'-15', Fair. Remain.

#35. *Conocarpus erectus* var. *sericeus*, Silver Buttonwood dia. 10.3" @ 2.5', h10'-12'xw10'-12', Remain.

#36. *Musa acuminata*, Banana, clumping stalks appears to be growing on private property. Remove if growing on city property.

#37. *Conocarpus erectus*, Green Buttonwood dia. 13.8", h18'-20'xw20'-25'. Remain.

#38a. *Adonidia merrillii*, Christmas Palm, 13'-15', Poor. Remove. Pencil Top growing into utility wires.

#38b. *Adonidia merrillii*, Christmas Palm, 13'-15', Poor. Remove. Pencil Top growing into utility wires.

#39. *Thrinax radiata*, Green Thatch Palm 15'-18' o.a., Good. Remain.

#40. *Thrinax radiata*, Green Thatch Palm 13'-15' o.a., Good. Remain.

#41. *Thrinax radiata*, Green Thatch Palm 15'-18' o.a., Good. Remain.

#42. *Conocarpus erectus* var. *sericeus*, Silver Buttonwood dia. 12.8" @ 2', h12'-15'xw10'-12', Fair. Remain.

- #43. *Conocarpus erectus* var. *sericeus*, Silver Buttonwood, manicured shrub. Remove.
- #44. *Conocarpus erectus* var. *sericeus*, Silver Buttonwood, manicured shrub. Remove.
- #45. *Conocarpus erectus* var. *sericeus*, Silver Buttonwood, manicured shrub. Remove.
- #46. *Delonix regia*, Royal Poinciana dia. 16.6", Very Poor Condition. Growing at 45* angle into parking and street. Hit numerous times by vehicles. Growing in cut-out fence line. Trunk and root flare beginning to marry due to angle.
- #47. *Adonidia merrillii*, Christmas Palm, 7'-8' g.w. 12'-15' o.a., Good, Remove or transplant. Growing into utility wires. Also growing in maintained 6' Cocoplum hedge are 2 additional Christmas Palms o.a. 6'-8'. Remove.
- #48. *Chrysobalanus icaco*, Cocoplum, maintained 6' hedge. Remove.
- #49. *Adonidia merrillii*, Christmas Palm, 12'-15', Poor. Remove. Pencil Top, growing under utility wires.
- #50. *Adonidia merrillii*, Christmas Palm, 10'-12', Poor. Remove. Pencil Top, growing under utility wires.
- #51. *Adonidia merrillii*, Christmas Palm, 10'-12', Poor. Remove. Pencil Top, growing under utility wires.
- #52. *Adonidia merrillii*, Christmas Palm, 12'-15', Poor. Remove. Pencil Top, growing under utility wires.
- #53. *Adonidia merrillii*, Christmas Palm, 10'-12', Poor. Remove. Pencil Top, growing under utility wires.
- #54. *Adonidia merrillii*, Christmas Palm, 18'-20', Fair. Remove or retain.
- #55. *Adonidia merrillii*, Christmas Palm, 15'-18', Fair. Remove or retain.
- #56. *Adonidia merrillii*, Christmas Palm, 15', Fair. Remove or retain
- #57. *Ptychosterma elegans*, Alexander Palm 20', Fair. Remove or retain
- #58. *Adonidia merrillii*, Christmas Palm, 20'-25', same root ball includes an Alexander of 10'. Fair. Remove or retain.
- #59. *Adonidia merrillii*, Christmas Palm, 10'-12', Fair. Remove or retain
- #60. *Adonidia merrillii*, Christmas Palm, 20'-25', Fair. Remove or retain
- #60a. *Adonidia merrillii*, Christmas Palm, 9', Fair. Remove or retain

#60b. *Adonidia merrillii*, Christmas Palm, 15'-18', Fair. Remove or retain

#61. *Swietenia mahogani*, Mahogany dia. 31", h40'-50'xw30'-40', Poor. Significant lean over parking and street, root system elevated on east side of tree, tree pruned by utility companies for line clearance. Canopy reduction necessary to retain tree.

#62. *Swietenia mahogani*, Mahogany dia. 22.6", h35'-40'xw20'-25', Poor. Slight lean over parking and street, tree pruned by utility companies for line clearance. Branch and twig dieback. Canopy reduction and cleaning to retain tree.

#63. *Adonidia merrillii*, Christmas Palm, 7' g.w., o.a. 12'-15', Good. Remain or transplant.

#64. *Adonidia merrillii*, Christmas Palm, 6' g.w., o.a. 10'-14', Good. Remain or transplant.

#65. Christmas Palms over hanging fence, behind fence on private property.

#66a. *Piscidia piscipula*, Jamaican Dogwood dia. 16.3", h30'-40'x w20', Poor. Remove. Past pruning removed collars; 1@N-6' and 1@S-9', 2 ripaways on main lead @ 15' and topping @ roof line. Regrowth over house. Utility pruned for line clearance

#66b. *Melicoccus bijugus*, Spanish Lime dia. 7.8", h20'xw10'. Poor. Remove Seedling growing in root system of J. Dogwood within 1' of trunk. Main lead dog-legs west. Utility pruned for line clearance

#67. *Albizia lebbek*, Woman's Tongue dia. 18.7", h30'-40'xw30'. Poor. Remove. Leaning completely over sidewalk and street. Root system lifted on Northside of tree. Invasive species. Utility pruned for line clearance

#68. *Delonix regia*, Royal Poinciana dia. 15.9", h30'-40'xw 25', Poor. Remove. Triple codominate crotch, large decaying wound just below trunk branch unions; in all likelihood was a fourth codominate branch. Utility pruned for line clearance

#69a. *Melicoccus bijugus*, Spanish Lime dia. 16.7"@3', h25'xw20', Poor. Remove. Included bark, codominate, leaning completely over sidewalk and street. Branch and twig dieback. Utility pruned for line clearance.

#69b. *Malpighia* fruiting shrub, Poor. Remove.

#70. *Phoenix roebelenii*, Pigmy Date Palm, 4 trunks overhanging fence of private property which appears to be on city property according to the plat maps. Remove.

#71. *Cocoplum* overhanging fence from private property.

#72. *Latania loddigesii*, Blue Latan Palm, 15'-20', Fair. Remain. Appears to be growing on city property according to the plat map.

Cynthia Domenech-Coogle

1006 16th Terrace

Key West, FL 33040

Cynthia's Blue Palms, LLC.

ISA Certified Arborist, FL #0277A

305/747-2142

International Society of Arboriculture, Certified Arborist FL #0277A

305-747-2142



Tree #2-Thatch Palm (to be transplanted offsite)



Tree #6A-young Strangler Fig tree-UPDATE-tree gone

Tree #6B-coconut palm (to be transplanted offsite).



Tree #6B and Tree #7-Thatch Palm (both to be transplanted offsite).



Planter #5-Eurpeon Fan palm probably planted by neighboring property owner.



Two photos showing the Alexander Palms, Trees #8, #9, and #10 (all to be removed).



To the left is tree #11, Thatch Palm and a Coconut palm, Tree #12 (both to be transplanted offsite).



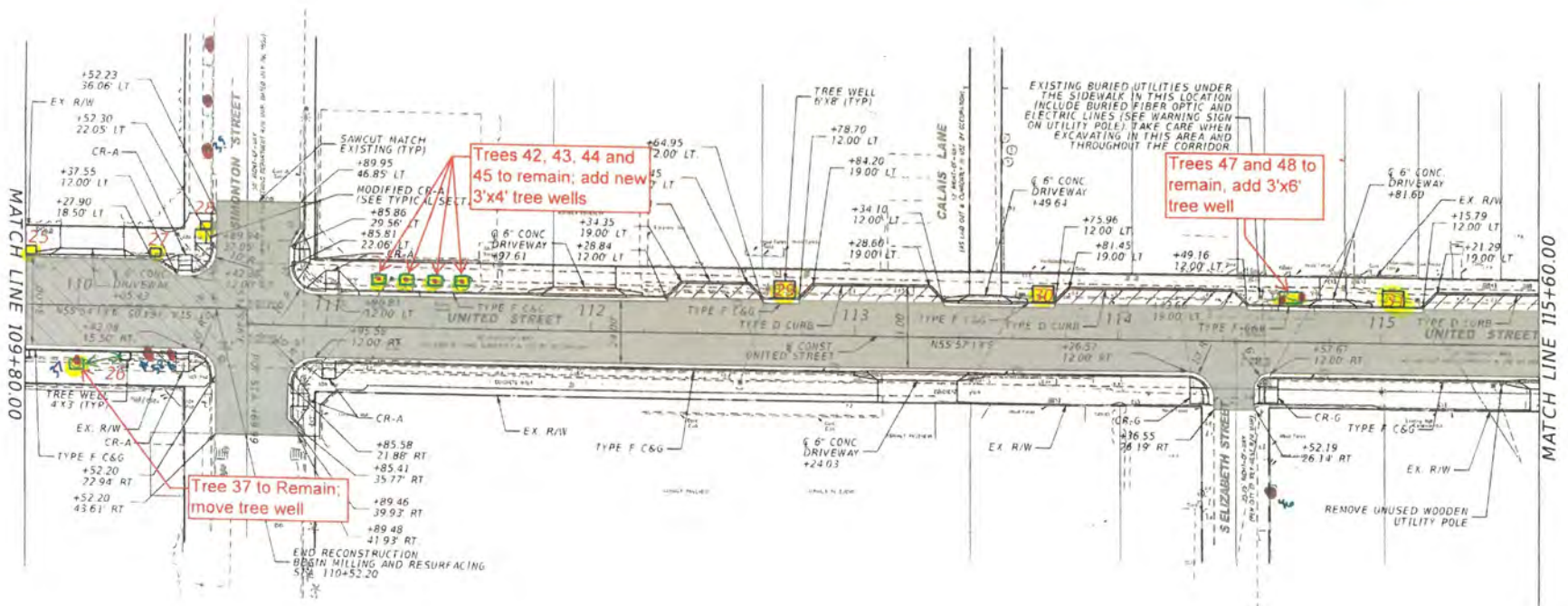
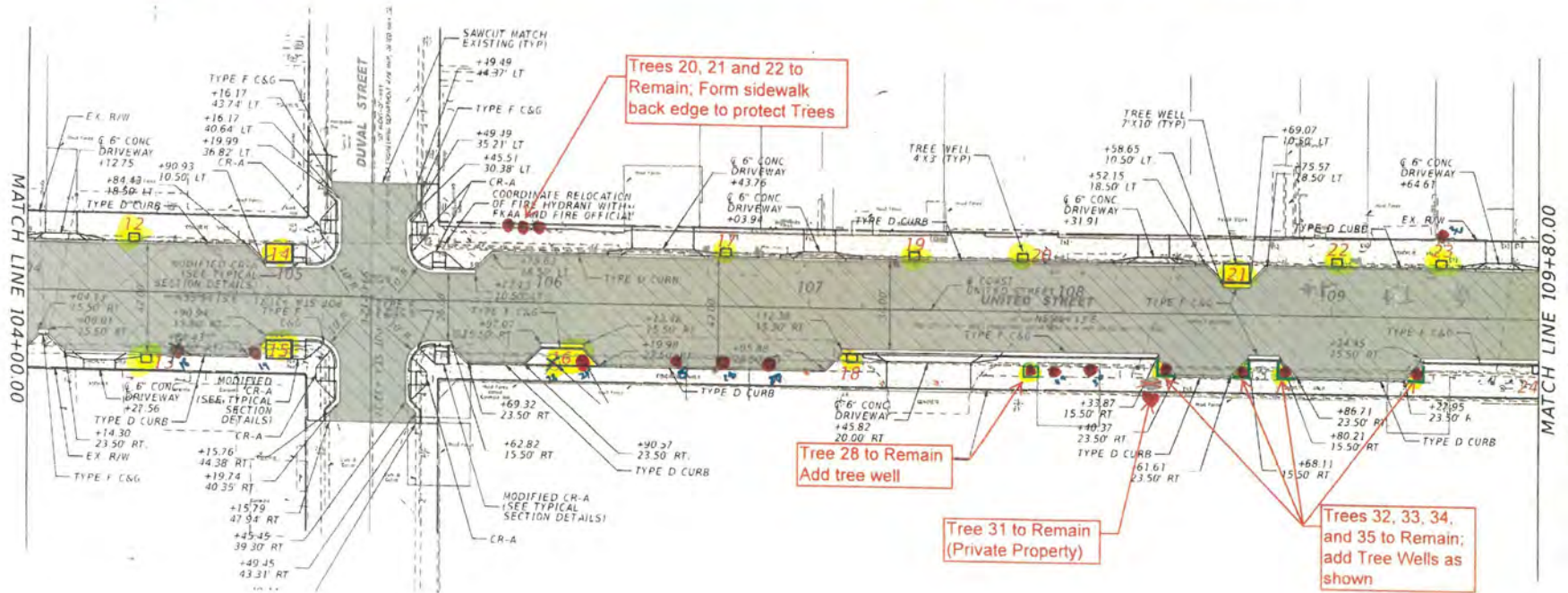
Tree #13-double Christmas Palm (to be removed).



Tree #15, Thatch Palm (to be transplanted)

● EXISTING Tree Locations

■ New Tree Wells





Tree #16, Bahama Tabebuia and
Tree #17, Thatch Palm (both to be
transplanted offsite)



Tree #19-Yellow Tabebuia (to
be transplanted offsite)

Duval to Simonton Streets



Trees #20, #21, & #22 to
remain.

Duval to Simonton Streets

Tree #24, Silver
Buttonwood (to
be removed)



Tree #23-Gone
(Hurricane Ian)



Trees #25, Pink Tabebuia and #26
& #27, Green Buttonwood (to be
removed)

Tree #28, Yellow Tabebuia
(to remain).

Trees #29, & #30, Christmas
Palms (to be removed)





Trees #32 & #33, Silver
Buttonwood (to remain)



Trees #33 & #34, Silver
Buttonwood (to remain)



Trees #34 & #35, Silver
Buttonwood (to remain)



Tree #37, Green
Buttonwood (to remain)



Trees 38A & #38B,
Alexander Palms (to be
removed)

Simonton to Elizabeth Streets

Trees and Shrubs #42-
45, Silver Buttonwood
(to remain)





Trees and Shrubs #47 & #48, Christmas Palms with Cocoplum (to remain)



Tree #49-Christmas Palm
(To be removed)

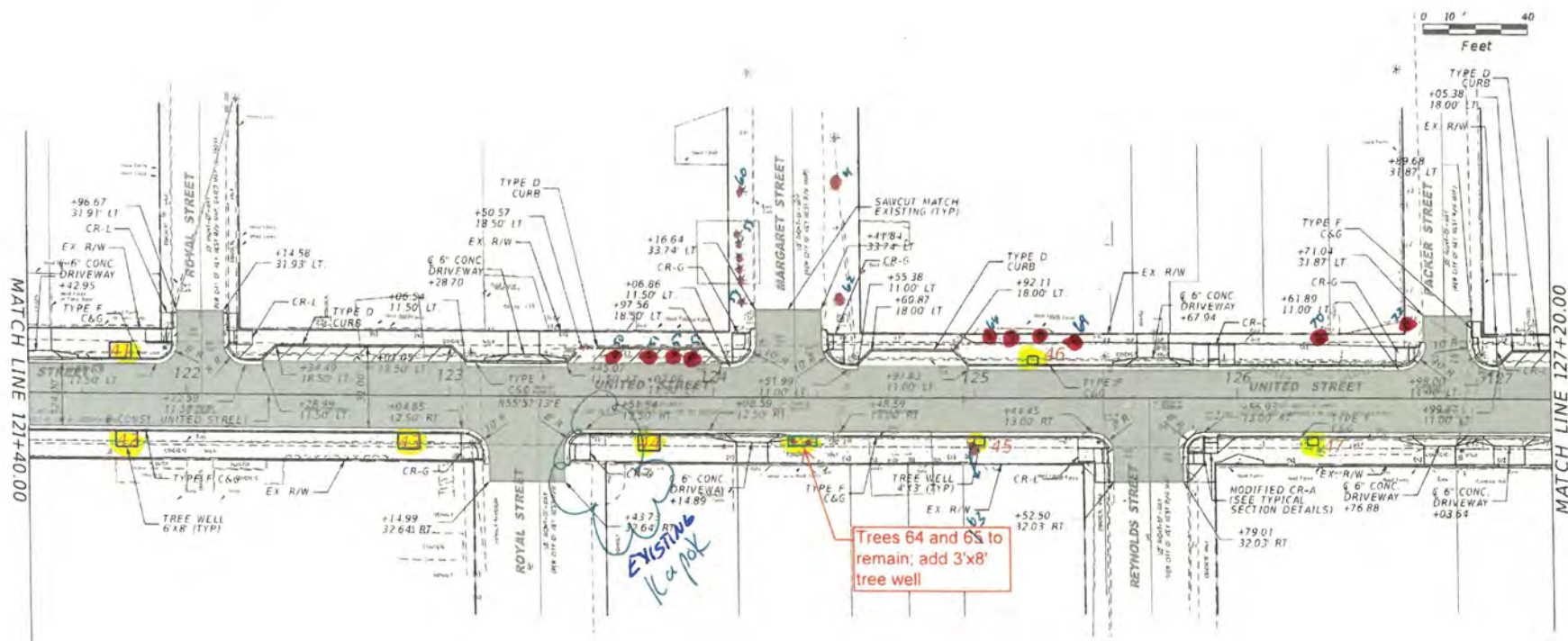
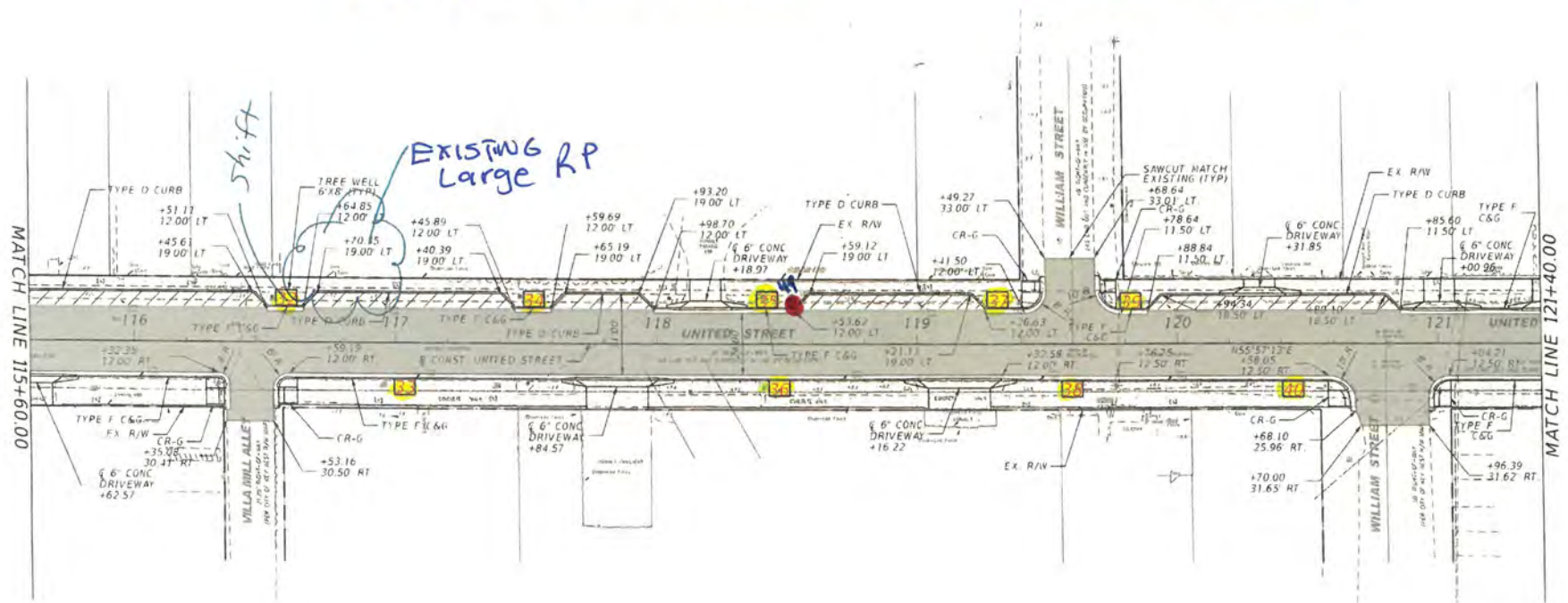
Margaret to Packer Streets

Trees #50 - #53, Christmas Palms (to be removed)



- Existing Tree Locations

New Tree Wells





Trees #63 & #64,
Christmas Palms (to
remain)



Two photos of Trees #66a-Jamaican
Dogwood, #66B-Spanish Lime, #67-
Woman's Tongue, #68-Royal Poinciana,
#69A-Spanish Lime, & #69B-Shrub (all to
be removed)



New Tree Wells

