



FLORIDA KEYS LAND SURVEYING

21460 OVERSEAS HWY, SUITE 4, CUDJOE KEY, FL 33042

PHONE: (305) 394-3690

EMAIL : FKLSeMail@gmail.com

www.floridakeyslandsurveying.net



STATEMENT OF QUALIFICATIONS FOR PROFESSIONAL SURVEYING SERVICES CONTRACT

CITY OF KEY WEST RFQ# 23-004

MARCH 27, 2023

Florida Keys Land Surveying, LLC

21460 Overseas Hwy, Suite 4

Cudjoe Key, FL 33042

Attn: Eric Isaacs



FLORIDA KEYS LAND SURVEYING

21460 OVERSEAS HWY, SUITE 4, CUDJOE KEY, FL 33042

PHONE: (305) 394-3690

EMAIL : FKLSemail@gmail.com

www.floridakeyslandsurveying.net

March 27, 2023

City of Key West

RE: Professional Surveying Services Contract

Dear City of Key West Staff:

In response to your request, we are pleased to submit this statement of qualifications, as well as express our interest in the Professional Surveying Services Contract.

Florida Keys Land Surveying, LLC is a multifaceted, local, minority owned, land surveying firm founded in 2010. In our response we have emphasized our experience working with private and government entities on a multitude of surveying projects. Additionally we have tried to illustrate our depth of experience and knowledge in all aspects of the land surveying industry, specifically in Monroe County and Key West.

We are a truly local land surveying firm with owners and employees that not only work in the Keys but also live in the Keys. We have a vested interest in the well being of the Keys and our neighbors who live here with us. We are proud to employ a team of the top land surveying professionals in the industry with well over 100 years of combined land surveying experience.

Florida Keys Land Surveying, LLC has enjoyed working on a multitude of projects throughout Monroe County and Key West, through architects, engineers and contractors. Additionally, we have strong relationships with, engineers, architects, contractors, attorneys, other municipalities, utility companies, and State and Federal agencies, including, the Monroe Engineering Department, the City of Marathon, Monroe County School Board, Keys Energy Services, the Florida Keys Aqueduct Authority, the Florida Department of Environmental Protection, and the Army Corp of Engineers.

As stated, we are a local firm that provides land surveying services in only Monroe County, with our office located in Cudjoe Key. Having our office in Cudjoe Key centrally locates us and allows us to be able to serve Key West.

We are excited to submit our qualifications and look forward to working with you. If you have any question or concerns about our services, please do not hesitate to contact us.

Sincerely,
Eric Isaacs & Matthew Blomberg



FLORIDA KEYS LAND SURVEYING

21460 OVERSEAS HWY, SUITE 4, CUDJOE KEY, FL 33042

PHONE: (305) 394-3690

EMAIL : FKLSemail@gmail.com

www.floridakeyslandsurveying.net

FIRM EXPERTISE AND TECHNICAL COMPETENCE



FLORIDA KEYS LAND SURVEYING

21460 OVERSEAS HWY, SUITE 4, CUDJOE KEY, FL 33042

PHONE: (305) 394-3690

EMAIL : FKLSeMail@gmail.com

www.floridakeyslandsurveying.net

Florida Keys Land Surveying, LLC is a state of Florida registered professional land surveying firm located on Cudjoe Key. Florida Keys Land Surveying, LLC is a registered Minority owned Business and is operated under the responsible charge of Professional Surveyor and Mapper Eric Adlai Isaacs. Florida Keys Land Surveying, LLC is licensed, insured and is a sustaining firm member of the Florida Surveying and Mapping Society.

Mr. Isaacs has been involved in the land surveying industry since 1992 and is dual licensed as a Professional Surveyor and Mapper in the state of Florida as well as a Professional Land Surveyor in the state of Oklahoma.

Florida Keys Land Surveying, LLC is an established land surveying firm that serves only Key West and Monroe County. Florida Keys Land Surveying, LLC has been providing land surveying solutions at the federal, state, county, city, and private level in the Florida Keys, since 2010.

Florida Keys Land Surveying, LLC is extremely well versed in all aspects of land surveying in Monroe County and particularly has extensive experience in the follow tasks, specifically in Monroe County and Key West:

- Boundary/Property surveys and analysis
 - Florida Keys Land Surveying, LLC is the trusted partner of choice in the Keys for many title company's and attorneys requiring boundary surveys.
- Topographic, easement, roadway and right-of-way surveys
 - Topographic Survey of the Key West Historic Seaport.
- Preparation of Easement or right-of-way exhibits
 - Preparation of easements for the Sunset Marina Project
- Property line staking
 - Florida Keys Land Surveying, LLC is the trusted partner of choice in the Keys for many title company's and attorneys requiring boundary surveys.
- Construction layout survey and staking
 - Key West International Airport – New Terminal Expansion construction staking
- Review of right-of-way and easement documents for developments
 - Review of existing easements and preparation of additional easements for the Sunset Marina Project
- Legal Descriptions
 - Authored legal descriptions for conservation easements at Crane Point Hammock
- Monument Placement
 - Florida Keys Land Surveying, LLC is extremely diligent, ensuring all boundary surveys that are completed by us are correctly monumented.



FLORIDA KEYS LAND SURVEYING

21460 OVERSEAS HWY, SUITE 4, CUDJOE KEY, FL 33042

PHONE: (305) 394-3690

EMAIL : FKLSemail@gmail.com

www.floridakeyslandsurveying.net

- Flood plain, FEMA, beach surveying/mapping
 - Florida Keys Land Surveying, LLC works closely with the City of Key West and Monroe County and has completed hundreds of FEMA elevation certificates in Monroe County.
 - Topographic Survey for Smather's Beach including profiles to compare sand loss from storms
- GIS/AutoCAD map and data base creation
 - Florida Keys Land Surveying, LLC utilizes the latest software (Autodesk Civil3D 2018) to ensure seamless collaboration of data
- Underground/aboveground utilities identification and mapping
 - Smather's Beach Design Survey including mapping all above ground and below ground utilities as marked in the field by others.
- Ground Penetrating Radar
 - Florida Keys Land Surveying, LLC has a relationship with an established firm that specializes in Ground Penetrating Radar projects.
- Cut and Fill Calculations
 - Hurricane Irma debris pile volume calculations completed for Monroe County
- As-built/record drawing survey and preparation
 - Trumbo Road As-Built Survey
 - Caroline Street Improvements As-Built Survey
- Aerial photography (Drone)
 - Florida Keys Land Surveying, LLC is the only surveying firm with a current Certificate of Authorization to operate drones within the Key West International Airport Airspace.
 - Sugarloaf KOA Boundary and Topographic Survey with geo referenced aerial ortho image
- Title Searches
 - Right of Way mapping and review of conflicting surveys on Angela Street, Key West between Eisenhower Drive and Gonzalez Lane. This project included working with a local attorney to have a title search completed as well as summarizing the completed title search and utilizing the pertinent data to complete the survey.



FLORIDA KEYS LAND SURVEYING

21460 OVERSEAS HWY, SUITE 4, CUDJOE KEY, FL 33042

PHONE: (305) 394-3690

EMAIL : FKLSemail@gmail.com

www.floridakeyslandsurveying.net

Eric Isaacs believes that land surveying clients in the Florida Keys deserve a firm that places a heavy emphasis on precision, professionalism and customer service. The technology in the land surveying field is always evolving and improving. In the last several years we have seen many advances in the field equipment as well as the software utilized to process the data.

Florida Keys Land Surveying, LLC, strives to stay abreast of and utilizes the latest in land surveying technology as well as keeping our staff educated in the latest land surveying practices. We utilize the latest equipment and software to make sure that our clients are getting the best possible service and final product. Additionally, our use of the most up to date software and equipment ensures that we can collaborate and share data efficiently with other industry professionals including, engineers, architects and government GIS Map administrators. We understand that as the technology continues to evolve so must our firm and our staff.

Florida Keys Land Surveying, LLC employs some of the best professionals in the field and to ensure that our employees stay relevant we have a program in place to incentivize and pay for the continuing education of our employees in the land surveying industry. Many of our employees have taken advantage of this program and have completed courses in the Certified Survey Technician Program through the National Society of Professional Surveyors.

Florida Keys Land Surveying, LLC places a high value on utilizing the latest technology and continues to upgrade our equipment as the technology improves. We currently host the Southernmost Trimble VRS Antenna at our office. This relationship with Trimble allows us unsurpassed access to the Trimble engineers and their technology, while being their partner in the Florida Keys.

Some of the equipment that we are currently utilizing includes:



FLORIDA KEYS LAND SURVEYING

21460 OVERSEAS HWY, SUITE 4, CUDJOE KEY, FL 33042

PHONE: (305) 394-3690

EMAIL : FKLSemail@gmail.com

www.floridakeyslandsurveying.net

FIELD EQUIPMENT UTILIZED

GPS Equipment

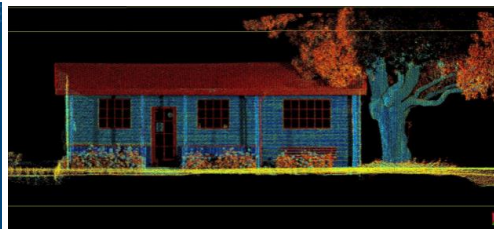


- Trimble R7 with Geodetic Antenna (GNSS Base Station)
- Trimble R8 with Geodetic Antenna (GNSS Rover)
- Trimble R10 Internet Rovers (GNSS Rover)

The latest and most advanced custom Trimble survey GNSS ASIC with an industry-leading 672 GNSS channels for unrivaled GNSS constellation tracking, including GPS, GLONASS, BeiDou, Galileo, QZSS, IRNSS as well as the full range of SBAS. The Trimble R10 tracks and processes all of today's available GNSS signals and is designed to support planned GNSS signals and systems that may be launched in the future. Improved reliability against sources of interference and spoofed signals. Improved power management to increase battery life and operating time in the field on average by 33 percent. Increased internal memory (6 GB) to store more than 10 years of raw observations.

TOTAL STATIONS

- Trimble SX12 Scanner Station



The Trimble® SX12 scanning total station redefines the capabilities of everyday survey equipment by providing the world's most innovative solution for surveying and construction professionals. Collect survey data, VISION imagery, and high-speed scans easily with Trimble Access field software and the SX12's Lightning 3DM. High accuracy total station, high quality scanner.



FLORIDA KEYS LAND SURVEYING

21460 OVERSEAS HWY, SUITE 4, CUDJOE KEY, FL 33042

PHONE: (305) 394-3690

EMAIL : FKLSeMail@gmail.com

www.floridakeyslandsurveying.net

- 1" Trimble C5 with on board Data Collection



The C5 offers the easy setup Trimble users have come to expect. The autofocus powered by Nikon enables the C5 to quickly and precisely focus on the anticipated distance, so users can simply sight, shoot and go. Nikon optics give you crisp, bright sightings even in low light conditions. The results are always precise and true—which ensures greater productivity back in the office, too.

FIELD DATA COLLECTORS



- Trimble TSC7 with SIM Cards (The SIM Cards allow for email communication directly between the Data Collectors in the field and the office computers, allowing us to better serve our clients in real time, rather than waiting for the data to be physically brought back to the office and downloaded).

LEVELS



- Trimble DiNi - Digital Level
Determine accurate height information 60% faster than with automatic leveling. Eliminate errors and reduce rework with digital readings. Level Accuracy 0.3 or 0.7 mm.



FLORIDA KEYS LAND SURVEYING

21460 OVERSEAS HWY, SUITE 4, CUDJOE KEY, FL 33042

PHONE: (305) 394-3690

EMAIL : FKLSeMail@gmail.com

www.floridakeyslandsurveying.net

HYDROLITE-TM



- HydroLite-TM™ single-frequency echosounder, standard equipment kit for hydrographic surveying. Developed to meet requirements for the U.S. Army Tactical Dive Teams, the rugged, wireless HydroLite-TM™ looks and feels like your traditional survey instrument. It quickly measures and logs depths more accurately than standard systems.

DJI DRONE FLEET



- **DJI Matrice 200 – Professional Infrastructure Drone with full remote camera capability**
The Matrice 300 RTK offers up to 55 minutes of flight time, advanced AI capabilities, 6 Directional Sensing & Positioning and more, setting a whole new standard for the commercial drone industry by combining intelligence with high-performance and unrivaled reliability.
- **DJI Phantom 4 Pro**
Professional Drone with Powerful Obstacle Avoidance. Advanced sensors and processors ensure everything is captured with more image detail and the image data needed for advanced post-production.

SOFTWARE / POST PROCESSING OF DATA

- **Autocad Civil 3D 2018**



Utilizing powerful Civil 3D software enables us to collaborate seamlessly with Engineers and other professionals in our industry. This ensures that we have no issues opening and sharing files for large projects.

- **Trimble Business Center (Post Field Processing Software)**
- **Trimble Geomatics Office (Post Field Processing Software)**
- **PIX 4D MAPPER PRO Professional Drone Mapping and Photogrammetry Software**
- **All Field Crews utilize IPADS in the field to digitally communicate directly from the field to the office. This enables a more efficient work flow between the field and the office.**



FLORIDA KEYS LAND SURVEYING

21460 OVERSEAS HWY, SUITE 4, CUDJOE KEY, FL 33042

PHONE: (305) 394-3690

EMAIL : FKLSemail@gmail.com

www.floridakeyslandsurveying.net

PROFESSIONAL QUALIFICATIONS AND CAPACITY OF STAFF



FLORIDA KEYS LAND SURVEYING

21460 OVERSEAS HWY, SUITE 4, CUDJOE KEY, FL 33042

PHONE: (305) 394-3690

EMAIL : FKLSemail@gmail.com

www.floridakeyslandsurveying.net

Florida Keys Land Surveying is operated under the responsible charge of Professional Surveyor and Mapper Eric Adlai Isaacs. Mr. Isaacs has been involved in the land surveying industry since 1992 and is dual licensed as a Professional Surveyor and Mapper in the state of Florida as well as a Professional Land Surveyor in the state of Oklahoma. Eric has been providing land surveying solutions at the federal, state, county, city, and private level in the Florida Keys and Key West for over 13 years.

Additionally, Eric is spearheading Florida Keys Land Surveying, LLC's Drone Program and is actively involved in the practice of professional drone mapping and photogrammetry. He has received his FAA 107 Remote Pilot Certification and is an active member of the FAA UAS Integration Program. Eric has relationships with, and works closely with, the Key West International Airport Tower Staff. Florida Keys Land Surveying, LLC is the only surveying firm with a current Certificate of Authorization to operate drones within the Key West International Airport Airspace.

Operations Manager Matthew Blomberg has 25 years of land surveying and construction project management experience. Matthew has an extensive background in all aspects of land surveying in Monroe County, since 1996. He has a thorough knowledge of boundary surveys, topographic surveys, construction layouts, home stakeouts, subdivision stakeouts, ALTA surveys, and general construction practices. Matthew has experience with AutoCAD, Land Desktop, Carlson Survey and AutoCAD Civil 3D 2018.

Project Manager Donald Fletchall joined the Florida Keys Land Surveying, LLC firm in 2020 and brings with him over 22 years of experience in the land surveying industry, exclusively in Monroe County and the Florida Keys. Don and his family are born and raised in Key West and have strong ties to the Florida Keys including the specialized knowledge that is required to perform accurate land surveys in the Florida Keys and Monroe County.

Eric Isaacs and Matthew Blomberg continue to strive to add top professionals to the Florida Keys Land Surveying, LLC team and welcome our latest team member, Professional Surveyor Andrew Hickin. Andrew Hickin is currently a licensed Professional Surveyor in the state of Ohio and is working towards his Florida Professional Surveyor and Mapper license. Andrew is an active member of the National Society of Professional Surveyors and brings with him over 20 years of land surveying experience in public and commercial surveying projects.

Eric and Matthew are continuing to build the premier Land Surveying Firm in Monroe County by seeking out and employing the top personnel in the land surveying industry in Monroe County. We have found that a combination of the latest technology in the hands of the top personnel with Florida Keys local knowledge makes for a superior product for the client.



FLORIDA KEYS LAND SURVEYING

21460 OVERSEAS HWY, SUITE 4, CUDJOE KEY, FL 33042

PHONE: (305) 394-3690

EMAIL : FKLSeMail@gmail.com

www.floridakeyslandsurveying.net

ERIC ISAACS, PSM & PLS

24760 Park Drive, Summerland Key, FL 33042 | H: 305 394-2363 | FKLSeMail@gmail.com

Professional Summary

Ambitious, licensed land surveyor who is key on details. I have managed multiple crews of various sizes. I love being outdoors and retracing previous land surveyor's footsteps. I am well versed in all aspects of land surveying including, construction staking, primary control networks, boundary resolution and drafting with Autodesk AutoCAD products.

Skill Highlights

- | | |
|--|--|
| <ul style="list-style-type: none">• Project management• Due diligence• Client interaction• Deed research• Total Stations• Robotic Total Stations• GPS/GNSS | <ul style="list-style-type: none">• AutoCAD Civil 3D• Trimble Geomatics Office• Trimble Access• Tripod Data Systems- Survey PRO• Digital level loops• Multi-crew management |
|--|--|

Professional Experience

President

Florida Keys Land Surveying, LLC

11/2010 to Present

Sugarloaf Key, Florida

- Responsible in charge Professional Surveyor and Mapper
- Control and oversee all survey operations for this company
- Manage and oversee all employees

Survey Manager

Charley Toppino and Sons

01/2009 to 11/2011

Key West, Florida

- Controlled all survey operations for this company.
- Reported directly to the owners of the company on all surveying projects

Party Chief

Oflynn Surveying

05/2007 to 01/2009

Key West, Florida

- Controlled all field operations
- Drafted field line work utilizing AutoCad
- Calculated and prepared coordinates for field staking
- Consulted with clients regarding our services.

Survey Manager

Isaacs Surveying

06/1998 to 05/2007

Sand Springs, Oklahoma

- Controlled 1-4 man field crews
- Produced design survey AutoCAD files
- Researched deeds and wrote legal descriptions
- Worked in the field with GPS, Robotics, Total Stations, Digital Levels, etc.
- Worked on projects from the federal to the private level.
- Traveled across the United States providing surveying services.



FLORIDA KEYS LAND SURVEYING

21460 OVERSEAS HWY, SUITE 4, CUDJOE KEY, FL 33042

PHONE: (305) 394-3690

EMAIL : FKLSeMail@gmail.com

www.floridakeyslandsurveying.net

Education

Associate of Science: Surveying Technology
Tulsa Community College

2004
Tulsa, Oklahoma, USA

Charles Page High School

1998
Sand Springs, Oklahoma, USA

Affiliations

Oklahoma Society of Land Surveyors
Florida Surveying and Mapping Society
Professional Association of Diving Instructors

Certifications

State of Oklahoma- Professional Land Surveyor 1631
State of Florida- Professional Surveyor and Mapper 6783
Trimble – Advance RTK Procedures
PADI Assistant Instructor 179848



FLORIDA KEYS LAND SURVEYING

21460 OVERSEAS HWY, SUITE 4, CUDJOE KEY, FL 33042

PHONE: (305) 394-3690

EMAIL : FKLSeMail@gmail.com

www.floridakeyslandsurveying.net

MATTHEW BLOMBERG

2827 Staples Ave • Key West, FL 33040 • 706-363-2448 • mblomberg@windstream.net

SUMMARY: I have an extensive background in all aspects of the land surveying. I Excel in problem solving with innovative solutions. I have a thorough knowledge of boundary surveys, topographic surveys, construction layouts, house stakeouts, subdivision stakeouts ALTA surveys and general construction practices. As a project manager and field chief I have the ability to complete a work order from start to finish. I have experience with Autocad , Land Desktop, and Autocad 2012 Civil 3D. I am not afraid to get my hands dirty & do whatever it takes to get the job done.

Key Skills

- Project Management
- Extensive surveying experience
- Highly skilled with computer programs including MS Office, Autocad, Photo Programs & Email.
- Goal Oriented, Able to Multitask
- Able to properly report on & document the project from start to finish.
- Able to effectively manage
- Able to focus on specific tasks until completion while dealing with day to day interruptions.
- Excellent communication skills
- Boundary Surveying
- Topographic Surveys
- Construction layouts and projects.
- ALTA Surveys

Experience

Florida Keys Land Surveying

2013 to Present

Operations Manager, 2013 to present

- Project management of survey and construction projects, including calculations and drafting.
- Review job requests, project scope of work, construction plans and create proposals and job schedule timelines.
- Conference with key decision people to secure proposals and continually market the company.
- Work directly with the firm President / Professional Surveyor and Mapper to coordinate the day to day operations of the business and ongoing projects.
- Prepare design survey, final survey and asbuilt surveys utilizing AutoCad Civil 3D

Carter Land Surveyors and Planners, Atlanta, Ga,

2012 to 2013

Operations / Production Manager, 2012 to 2013

- Oversight and management of the production operation.
- Worked directly with the licensed surveyor to manage office personnel.
- Oversight and management of project draftsman and 12 field crews in 4 states (Ga, SC, NC & TX)
- In charge of daily distribution of work to both field crews and draftsman.
- Worked with customer service personnel to manage clients, projects and customer satisfaction.
- In charge of hiring, termination and training of field crews, including travel to other office locations.

Future Plannings, LLC, Commerce, Ga

2009 to 2012

Project Manager, 2009 to 2012

- Future Plannings is in the business of rehabbing residential properties for resale, the property conditions range from full rehabs to light touch up and clean up.
- Managed projects establishing schedules and budgets.
- Worked with subcontractors to secure bids and prioritize work required to stay on time and budget.
- Responsible for creating elevation drawings, layout change drawings, and kitchen and bath remodel drawings for subcontractors and permitting as necessary.
- Met and conferenced with the principals involved with the projects to ensure that the work being done was the best use of the budget and that the final product was market ready on time.



FLORIDA KEYS LAND SURVEYING

21460 OVERSEAS HWY, SUITE 4, CUDJOE KEY, FL 33042

PHONE: (305) 394-3690

EMAIL : FKLSeMail@gmail.com

www.floridakeyslandsurveying.net

MATTHEW BLOMBERG

2827 Staples Ave • Key West, FL 33040 • 706-363-2448 • mblomberg@windstream.net

J. Lynn O'Flynn, Inc., Key West, FL

2006 to 2009

Draftsman and Executive Assistant to the owner (Telecommuting) 2006 to 2009

- Served as executive assistant to the owner, managed large projects, coordinated drafting using Autocad.
- Reviewed job requests, scope of work, construction plans and created bids and job schedule timetables.
- Coordinated large construction projects including communication with key construction personal.
- Traveled to the company office once a month for a week to work hands on with the owner and the field crew including, managing the office and the business when the owner was on vacation or unavailable.

J. Lynn O'Flynn, Inc., Key West, FL

2003 to 2006

Office Manager, Draftsman and Executive Assistant to the owner 2003 to 2006

- Served as executive assistant to the owner, managed large projects, coordinated drafting using Autocad, and functioned as primary liaison to customers.
- Managed employees, created appointments and handled field crew scheduling while coordinating between the customers, employees and the company owner.
- Conferenced with the company owner and assisted in the personnel decisions pertaining to the employees and their future with the company.
- Created bids and met with key decision people to secure said bids and continually market the company.
- Reviewed job requests, scope of work, construction plans and created bids and job schedule timetables.

J. Lynn O'Flynn, Inc., Key West, FL

2001 to 2003

Crew Chief, Field Supervisor, 2001 to 2003

- Same duties as performed for Norby and Associates (J. Lynn O'Flynn, Inc was the same business as Norby and Associates, Mr. Norby passed away and his business partner J. Lynn O'Flynn changed the name of the company)

Norby and Associates, Key West, FL

1998 to 2001

Crew Chief, Field Supervisor, 1998 to 2001

- Managed field crew while maintaining communication with the office manger, and the owner of the company.
- Worked in the field on Boundary Surveys, Topographic Surveys, Elevation Certificates, and Construction projects including layouts.
- Assisted in the gathering of field information including meeting with clients.
- Maintained field notes and quality control of the jobs.
- Involved in the meetings with the office manager, owner of the company, subcontractors, attorneys, and the other project managers regarding ongoing projects.

Norby and Associates, Key West, FL

1996 to 1998

Field Assistant / Rod Man, 1996 to 1998

- Worked as a rod man and field assistant to the party chief and/or the company owner(s).
- Worked in the field on Boundary Surveys, Topographic Surveys, Elevation Certificates, and Construction projects including layouts.
- Assisted in the gathering of field information including meeting with clients.
- Participated in all aspects of the field work involved to complete a job.



FLORIDA KEYS LAND SURVEYING

21460 OVERSEAS HWY, SUITE 4, CUDJOE KEY, FL 33042

PHONE: (305) 394-3690

EMAIL : FKLSeMail@gmail.com

www.floridakeyslandsurveying.net

DONALD FLETCHALL

3314 Northside Dr, Unit 146, Key West, FL 33040

SUMMARY: I am well versed in all aspects of land surveying in the Florida Keys. I have made my career land surveying exclusively in the Florida Keys and as such have a lot of local knowledge and contacts throughout Monroe County. I feel that I could be a great asset to any firm working in the Florida Keys.

Key Skills

- Project Management
- Extensive surveying experience
- Boundary Surveys
- Topographic Surveys
- Able to effectively manage
- Able to focus on specific tasks until completion while dealing with day to day interruptions.
- Excellent communication skills
- Construction layouts and projects.
- ALTA Surveys
- FEMA Elevation Certificates

Experience

Florida Keys Land Surveying

2020 to Present

Project Manager, 2020 to present

- Project management of survey and construction projects, including calculations and drafting.
- Review job requests, project scope of work, construction plans and create proposals and job schedule timelines.
- Conference with key decision people to secure proposals and continually market the company.
- Prepare design survey, final survey and asbuilt surveys utilizing AutoCad Civil 3D

Monroe County Surveying

2018 to 2020

Project Manager, 2018 to 2020

- Project management of survey and construction projects, including calculations and drafting.
- Review job requests, project scope of work, construction plans and create proposals and job schedule timelines.
- Conference with key decision people to secure proposals and continually market the company.
- Prepare design survey, final survey and asbuilt surveys utilizing AutoCad Civil 3D

Island Surveying

2010 to 2018

Project Manager, 2010 to 2018

- Project management of survey and construction projects, including calculations and drafting.
- Review job requests, project scope of work, construction plans and create proposals and job schedule timelines.
- Conference with key decision people to secure proposals and continually market the company.
- Prepare design survey, final survey and asbuilt surveys utilizing AutoCad Civil 3D

F.H. Hilderband Surveys / Engineers

1998 to 2010

Draftsman and Executive Assistant to the owner (Telecommuting) 2006 to 2009

- Worked as a rod man and field assistant to the company owner.
- Worked in the field on Boundary Surveys, Topographic Surveys, Elevation Certificates, and Construction projects including layouts.
- Assisted in the gathering of field information including meeting with clients.
- Participated in all aspects of the field work involved to complete a job.
- Worked my way up in the company from Rodman to Senior Party Chief.



FLORIDA KEYS LAND SURVEYING

21460 OVERSEAS HWY, SUITE 4, CUDJOE KEY, FL 33042

PHONE: (305) 394-3690

EMAIL : FKLSemail@gmail.com

www.floridakeyslandsurveying.net

Florida Keys Land Surveying



Andrew Hickin, Professional Land Surveyor

Andrew Hickin has 20 years of land surveying experience on public, commercial and residential projects. Andrew has prepared boundary and topographic surveys and participated extensively in construction layout.

EDUCATION

Bachelor of Science,
Surveying and Mapping
Akron University

Associate of Science,
Civil Engineering Tech
Lakeland Community
College

REGISTRATIONS

Professional Surveyor:
Ohio

AFFILIATIONS

NSPS
PLSO

Projects Completed

Construction Surveying

-Cleveland State University : Center for Innovations in Health
-First Energy Substation: Hudson, Ohio

Real Estate Development

-Speedway, LLC : Reconstruction ALTA and Topographic Mapping
-200 acre Land Development mapping and Land Use Planning

Engineering and Architectural

-Lakewood City Schools:
Building Addition and Demolition: Existing Conditions Mapping
-Metro Health Hospital: Behavioral Health Building Demolition

Environmental

-Camp Ravenna, Stream Culvert Remediation: Existing Conditions
-City of Kent: Storm Water Management



FLORIDA KEYS LAND SURVEYING

21460 OVERSEAS HWY, SUITE 4, CUDJOE KEY, FL 33042

PHONE: (305) 394-3690

EMAIL : FKLSemail@gmail.com

www.floridakeyslandsurveying.net

RELEVANT EXPERIENCE WITH KEY WEST AND MONROE COUNTY



FLORIDA KEYS LAND SURVEYING

21460 OVERSEAS HWY, SUITE 4, CUDJOE KEY, FL 33042

PHONE: (305) 394-3690

EMAIL : FKLSemail@gmail.com

www.floridakeyslandsurveying.net

Florida Keys Land Surveying, LLC is a state of Florida registered professional land surveying firm located on Sugarloaf Key. Florida Keys Land Surveying, LLC is a registered Minority owned Business and is operated under the responsible charge of Professional Surveyor and Mapper Eric Adlai Isaacs. Florida Keys Land Surveying, LLC is licensed, insured and is a sustaining firm member of the Florida Surveying and Mapping Society.

Mr. Isaacs has been involved in the land surveying industry since 1992 and is dual licensed as a Professional Surveyor and Mapper in the state of Florida as well as a Professional Land Surveyor in the state of Oklahoma.

Florida Keys Land Surveying, LLC is an established land surveying firm that serves only Monroe County. Florida Keys Land Surveying, LLC has been providing land surveying solutions at the federal, state, county, city, and private level in the Florida Keys, since 2010.

Florida Keys Land Surveying, LLC is extremely well versed in all aspects of land surveying in Monroe County and particularly has extensive experience in the follow tasks:
(Please see similar completed projects listed below each task, identified to illustrate competency)

- **Boundary/Property Surveys**
 - Florida Keys Land Surveying, LLC is the trusted partner of choice in the Florida Keys for many Title Company's and Attorneys requiring boundary surveys. In 2022 Florida Keys Land Surveying, LLC completed more than 600 boundary surveys in Monroe County.
 - Boundary Survey of 3251 Overseas Highway, Marathon, for Monroe County.
 - Boundary and Topographic Surveys of 39 Jenny Lane, Key Largo; 1st Avenue, Cudjoe Gardens; 28 Emerald Dr, Big Coppitt & Indies Dr, Ramrod Key, for Monroe County for the Tiny Home Project.
 - Boundary Survey of 316 Simonton Street, Key West, for Monroe County.
- **Right of Way Determinations**
 - Right of Way Mapping and Topographic Survey of the 1400 block of Duval Street, Key West, for the City of Key West.
 - Right of Way Mapping and review of conflicting surveys on Angela Street, Key West between Eisenhower Drive and Gonzalez Lane, for The City of Key West.
 - Right of Way Mapping and Topographic Survey of Atlantic Boulevard between Bertha Street and White Street, for the City of Key West.
- **Topographic Surveys**
 - Topographic Survey of the Key West Historic Seaport for the City of Key West.
 - Topographic Survey of 20th Street from Flagler to 18th Terrace for Stantec
 - Topographic Survey of a portion of Green Street for Stantec



FLORIDA KEYS LAND SURVEYING

21460 OVERSEAS HWY, SUITE 4, CUDJOE KEY, FL 33042

PHONE: (305) 394-3690

EMAIL : FKLSemail@gmail.com

www.floridakeyslandsurveying.net

- **Flood plain, FEMA, Elevation Certificates**
 - Florida Keys Land Surveying, LLC works closely with the City of Key West and Monroe County.
 - Year to Date, Florida Keys Land Surveying has completed over 100 Elevation Certificates exclusively in Monroe County.
 - In 2020 Florida Keys Land Surveying completed a workorder for 22 Elevation Certificates for Keys Energy Services
- **Review and Graphical Interpretation of Metes and Bounds Legal Descriptions**
 - Authored a new legal description for a parcel of land at 390 Key Deer Blvd, Big Pine Key, for Monroe County.
 - Authored legal descriptions for conservation easements at Crane Point Hammock.
 - Authored legal descriptions for the Garden View Affordable Housing Complex.
 - Authored a new legal description of 3251 Overseas Highway, Marathon, for Monroe County / Fisherman's Hospital.

Additional Land Surveying Services completed by Florida Keys Land Surveying, LLC

- **Mapping**
 - Jose Marti Drive Topographic Survey including mapping all above ground utilities for the City of Key West.
 - Smather's Beach Design Survey including mapping all above ground and below ground utilities as marked in the field by others for the City of Key West.
- **ALTA / NSPS Surveys**
 - FKLS provided 26 ALTA / NSPS Surveys for the sale of the Dion's Oil Properties.
 - ALTA / NSPS Survey of the Quarry Apartments Project
 - ALTA / NSPS Survey of the Day's Inn in Key Largo
 - ALTA / NSPS Survey of 2945-2975 Overseas Highway, Marathon for Monroe County.
 - ALTA / NSPS Survey of 316 Simonton Street, Key West for Monroe County.
 - ALTA / NSPS Survey of the Faro Blanco Resort, Marathon, Fl.
- **Construction layout and staking**
 - Truman Waterfront construction staking
 - Wreckers Cay Apartments construction staking
 - Stanley Switlik School construction staking
 - The Quarry Apartments construction staking



FLORIDA KEYS LAND SURVEYING

21460 OVERSEAS HWY, SUITE 4, CUDJOE KEY, FL 33042

PHONE: (305) 394-3690

EMAIL : FKLSemail@gmail.com

www.floridakeyslandsurveying.net

- **Easement Preparation for Developments**
 - Review of existing easements and preparation of additional easements for the Sunset Marina Project
 - Review of existing easements and preparation of additional easements for the Stock Island Hotel and Marina Project
- **Beach Surveying / Mapping**
 - Topographic Surveys include profiles of Dog Beach, Simonton Beach and South Beach for sand rehabilitation purposes.
 - Topographic Survey including profiles of Smather's Beach for sand rehabilitation purposes.
 -
- **As-built / Record Drawing Surveys**
 - Trumbo Road As-Built Survey
 - Caroline Street Improvements As-Built Survey
 - The Truman Waterfront As-Built Survey for the City of Key West
 - Trumbo Road Dock As-Built Survey.
 - Florida Keys Aqueduct Authority water line tap As-Built Surveys.
- **Aerial Mapping/Modeling/Photography (Drone) - Florida Keys Land Surveying, LLC is the only Surveying Firm in Monroe County with a current FAA Certificate of Authorization to operate drones within the Key West International Airport Airspace.**
 - Sugarloaf KOA Boundary and Topographic Survey with a geo referenced aerial ortho image, flown in real time by Florida Keys Land Surveying, LLC.
 - 390 Key Deer Blvd, Big Pine Key, FL Specific Purpose Survey with a geo referenced aerial ortho image, flown in real time by Florida Keys Land Surveying, LLC.
 - Keys Energy Line Monitoring, aerial ortho image, flown in real time by Florida Keys Land Surveying, LLC.
- **Hydro Surveying**
 - Key West Harbor Yacht Club – Mapped the sea bottom at the entrance to the Key West Harbor Yacht Club.
 - Palmers Resort, Ramrod Key, FL – Mapped the sea bottom adjacent to the property and beyond, to identify a - 4' water depth channel to the property.
 - Faro Blanco Resort, Marathon Key, FL – Submerged Land Lease Survey for a FL DEP Land Lease application.



FLORIDA KEYS LAND SURVEYING

21460 OVERSEAS HWY, SUITE 4, CUDJOE KEY, FL 33042

PHONE: (305) 394-3690

EMAIL : FKLSemail@gmail.com

www.floridakeyslandsurveying.net

Some notable projects that Eric and/or Matthew and/or Florida Keys Land Surveying has been involved with (in addition to and including the Firm's notable projects) include:

- Staking, Layout and As-Built Survey of N.A.S.K.W Sigsbee Sewer project
- Staking and Layout of Steam Plant Condominium, Key West, FL
- Staking, Layout and As-Built Survey of the Key West, FL Courthouse Complex
- Staking, Layout and As-Built Survey of Key Cove Landing Subdivision, Key West, FL
- Staking, Layout and As-Built Survey of the Key West International Airport, T-Hanger expansion, taxi way expansion and wet lands revitalization
- Staking, Layout and As-Built Survey for the Florida Keys Aqueduct Authority Sewer and Water Line Project Big Coppitt Key, FL
- Boundary Survey, Staking, Layout and As-Built Survey for the Florida Keys Aqueduct Authority Reverse Osmosis Plant, Key West, FL
- Staking, Topographic surveys, and As-Built surveys for the mitigation and airfield conversion projects at N.A.S.K.W.-Boca Chica
- Staking and As-Built Surveys for new sidewalk improvements in Key West (Atlantic Boulevard, Duck Avenue, Leon Street, Virginia Street, College Road)
- Staking and As-Built survey for reconstruction of Flagler Avenue in Key West
- Staking and As-Built surveys at Key West International Airport.
- Quarry Apartments construction and as-built surveys including a FL DEP Submerged Land Lease Survey
- Faro Blanco Yacht Club and Resort FL DEP Submerged Land Lease Survey
- Construction staking and As-Built Surveys of Stanley Switlik School, & Key West High School
- Boundary surveys for construction of affordable housing "tiny homes" for Monroe County
- Mapping of wetlands and environmentally sensitive areas in lower keys, including out islands off the coast of the Florida Keys.
- Boundary surveys for construction for Keys Community Builders affordable housing project
- Boundary survey and authored legal description of the Mosquito Control Site in Stock Island
- Numerous FEMA Elevation Certificates
- Numerous mortgage/boundary surveys in the Florida Keys



FLORIDA KEYS LAND SURVEYING

21460 OVERSEAS HWY, SUITE 4, CUDJOE KEY, FL 33042

PHONE: (305) 394-3690

EMAIL : FKLSemail@gmail.com

www.floridakeyslandsurveying.net

PAST PERFORMANCE ON SIMILAR PROJECTS

- **MONROE COUNTY CONTINUING CONTRACT FOR PROFESSIONAL ENGINEERING AND SURVEYING SERVICES**
Monroe County Engineering - 1100 Simonton Street, Key West, FL 33040
Kevin G. Wilson, P.E. - 305-453-8788
 - Professional Surveying Services Agreement (2015 – On Going)
 - FKLS provides all surveying services on an as needed basis, in which the survey cost does not exceed \$10,000.00.
 - Including but not limited to: Boundary / Property Surveys, Right of Way Determinations, Topographic Surveys, FEMA Elevation Certificates, Interpretation of Metes and Bounds Legal Descriptions, & General Mapping.
- **MONROE COUNTY – COMMUNITY BLOCK GRANT-DISASTER RECOVERY (CDBG-DR) VALUNTARY HOME BUYOUT PROGRAM – U.S. DEPARTMENT OF HOUSING AND URBAN DEVELOPMENT (HUD)**
Monroe County Planning & Environmental Resources – 102050 Overseas Highway, Key Largo, FL 33037
Cynthia Guerra, MPA, CFM – Acquisitions Manager, VHBP Fair Housing Coordinator - 305-453-8756
 - Professional Surveying Services Agreement (2021 – On Going)
 - FKLS provides all surveying services for the VHBP program.
- **MONROE COUNTY SCHOOL BOARD CONTINUING CONTRACT FOR PROFESSIONAL SURVEYING SERVICES**
Monroe County School District – 1310 United Street, Key West, FL 33040
Douglas Pryor – Facilities Planner - 305-293-1400 x 53465
 - Professional Surveying Services Agreement (2020 – On Going)
 - FKLS provides all surveying services on an as needed basis, in which the survey cost does not exceed \$100,000.00
- **CITY OF KEY WEST CONTINUING CONTRACT FOR PROFESSIONAL SURVEYING SERVICES**
City of Key West – PO Box 1409, Key West, FL 33041
Kelly M. Crowe, P.E. – City Engineer, City of Key West - 305-809-3967
 - Professional Surveying Services Agreement (2013-2016) Executed two-year extension option (2016-2018)
 - Professional Surveying Services Agreement (2018-2021) with a two-year option to extend.
 - Professional Surveying Services Agreement executed 2 year extension (2021-2023)
 - FKLS provides all surveying services on an as needed basis, including but not limited to: Boundary / Property Surveys, Right of Way Determinations, Topographic Surveys, FEMA Elevation Certificates, Interpretation of Metes and Bounds Legal Descriptions, Drone Mapping & General Mapping.
- **ATKINS GLOBAL – CONTINUING CONTRACT FOR KEY WEST PROFESSIONAL ENGINEERING ENVIRONMENTAL SERVICES**
Atkins Global – 800 Waterford Way (NW 62nd Ave), Suite 700, Miami, FL 33126
W. Mark Henry – Senior Scientist - 305-514-3485
 - Surveying Team Member on the Key West Professional Engineering Environmental Services Contract (2014-2017)
 - Executed two-year extension option (2017 – 2019)
 - Surveying Team Member on the Key West Professional Engineering Environmental Services Contract (2020- On Going)
 - FKLS provides all surveying services on an as needed basis, including but not limited to: Topographic Surveys, Wetland Mapping & General Mapping.
- **TETRA TECH – CONTINUING CONTRACT FOR KEY WEST PROFESSIONAL ENGINEERING ENVIRONMENTAL SERVICES**
Tetra Tech – 759 S. Federal Highway, Suite 314, Stuart, FL 34994
Dave Frodsham – P.E. – Senior Civil Engineer – 772-781-3400
 - Surveying Team Member on the Key West Professional Engineering Environmental Services Contract (2020-On Going)
 - FKLS provides all surveying services on an as needed basis, including but not limited to: Topographic Surveys, Wetland Mapping & General Mapping.



FLORIDA KEYS LAND SURVEYING

21460 OVERSEAS HWY, SUITE 4, CUDJOE KEY, FL 33042

PHONE: (305) 394-3690

EMAIL : FKLSemail@gmail.com

www.floridakeyslandsurveying.net

- **STANTEC - CONTINUING CONTRACT FOR KEY WEST GENERAL ENGINEERING SERVICES**

Stantec – 901 Ponce de Leon Blvd, Suite 900, Coral Gables, FL 33134

Sean Compel, P.E. – LED AP, ENV SP - 305-445-2900 x 2230

- Surveying Team Member on the Key West General Engineering Services Contract (2017 – On Going)
- FKLS provides all surveying services on an as needed basis, including but not limited to: Boundary / Property Surveys, Right of Way Determinations, Topographic Surveys, & General Mapping.
- Including but not limited to: Boundary / Property Surveys, Right of Way Determinations, Topographic Surveys, FEMA Elevation Certificates, Interpretation of Metes and Bounds Legal Descriptions, Drone Mapping & General Mapping.

- **KEYS ENERGY SERVICES CONTINUING CONTRACT FOR PROFESSIONAL SURVEYING SERVICES**

Keys Energy Services – 1001 James Street, Key West, FL 33040

Nick Batty - 305-304-3874

- Professional Surveying Services Contract (2016 – On Going)
- Keys Energy Services provided FKLS a “piggy back” contract, utilizing the same terms of the City of Key West contract, to provide all surveying services on an as needed basis, including but not limited to: Boundary / Property Surveys, Right of Way Determinations, Topographic Surveys, FEMA Elevation Certificates, Interpretation of Metes and Bounds Legal Descriptions, Drone Mapping & General Mapping.

- **TERRAMAR ENVIRONMENTAL SERVICES, INC.**

1241 Crane Blvd, Sugarloaf Key, FL 33042

Philip A. Frank, Ph.D. - 305-393-4200

- Surveying Services (Multiple Projects)
- FKLS provides surveying services on an as needed basis (Not under contract), including but not limited to: Boundary / Property Surveys, FEMA Elevation Certificates, Interpretation of Metes and Bounds Legal Descriptions, Drone Mapping & General Mapping.

- **AJAX BUILDING CORPORATION**

424 SW 7th Terrace, Gainesville, FL 32601

James Marini – Senior Project Manager - 352-377-1102

- Gerald Adams Elementary School – New Construction Surveyor of Record
- Stanley Switlik Elementary School – New Construction Surveyor of Record
- Marathon High School Athletic Complex – New Construction Surveyor of Record
- Monroe County School District Transportation facility – New Construction Surveyor of Record
- Key West High School Backyard – New Construction Surveyor of Record
- Sugarloaf School – New Construction Surveyor of Record
- FKLS was under contract to provide all surveying services for each project above including but not limited to: construction layout and as built surveys.

- **TREPANIER & ASSOCIATES – LAND PLANNERS & DEVELOPMENT CONSULTANTS**

1421 First Street, Key West, FL 33040

Owen Trepanier - 305-293-8983

- Surveying Services (Multiple Projects)
- FKLS provides surveying services on an as needed basis (Not under contract), including but not limited to: Boundary / Property Surveys, FEMA Elevation Certificates, Interpretation of Metes and Bounds Legal Descriptions, Drone Mapping & General Mapping.

- **CHARLEY TOPPINO & SONS**

129 Toppino Industrial Dr, Key West, FL 33041

Rey Martinez, P.E. – Director of Operations - 305-296-5606

- Surveying Services (Multiple Projects)
- FKLS provides surveying services on an as needed basis (Not under contract), including but not limited to: construction layout and as built surveys.



FLORIDA KEYS LAND SURVEYING

21460 OVERSEAS HWY, SUITE 4, CUDJOE KEY, FL 33042

PHONE: (305) 394-3690

EMAIL : FKLSemail@gmail.com

www.floridakeyslandsurveying.net

- **THE VESTCOR COMPANIES**

3030 Hartley Rd, Suite 310, Jacksonville, FL 32257

Jason Floyd – Chief Financial Officer – 904-288-7822

- Quarry Apartments – Affordable Housing Phase I – Surveyor of Record
- Quarry Apartments – Affordable Housing Phase II – Surveyor of Record
- Quarry Apartments – Affordable Housing Phase III – Surveyor of Record
- Marty's Place – Affordable Housing – Surveyor of Record
- FKLS was under contract to provide all surveying services for each project above including construction layout, as built surveys and final ALTA / ACSM Surveys.

- **RURAL NEIGHBORHOODS LLC**

PO Box 343529, Florida City, FL 33034

Steve Kirk – 305-242-2142

- The Landings at Sugarloaf Key – Affordable Housing – Surveyor of Record
- Dockside at Sugarloaf Key – Affordable Housing – Surveyor of Record
- Seahorse Modular Project – Big Pine Key – Affordable Housing – Surveyor of Record
- FKLS is under contract to provide surveying services for each project above including initial design surveys

- **THE CLOSING DEPARTMENT**

3432 Duck Avenue, Key West, FL 33040

Deborah Condella (Owner) - 305-293-9925

- Survey Services (Mortgage / Boundary Surveys)
- FKLS provides mortgage and boundary surveys on an as needed basis (Not under contract)

- **RICHARD M. KLITENICK, ESQ., P.A.**

1009 Simonton Street, Key West, FL 33040

Richard M. Klitenick - 305-292-4101

- Survey Services (Mortgage / Boundary Surveys)
- FKLS provides mortgage and boundary surveys on an as needed basis (Not under contract)

- **SPOTTSWOOD, SPOTTSWOOD, SPOTTSWOOD, AND STERLING**

506 Fleming Street, Key West, FL 33040

Erica Sterling - 305-294-9556

- Survey Services (Mortgage / Boundary Surveys)
- FKLS provides mortgage and boundary surveys on an as needed basis (Not under contract)

- **OROPEZA, STONES & CARDENAS**

221 Simonton Street, Key West, FL 33040

Greg Oropeza - 305-296-0252

- Survey Services (Mortgage / Boundary Surveys)
- FKLS provides mortgage and boundary surveys on an as needed basis (Not under contract)



FLORIDA KEYS LAND SURVEYING

21460 OVERSEAS HWY, SUITE 4, CUDJOE KEY, FL 33042

PHONE: (305) 394-3690

EMAIL : FKLSemail@gmail.com

www.floridakeyslandsurveying.net

REFERENCES

- **MONROE COUNTY – COMMUNITY BLOCK GRANT-DISASTER RECOVERY (CDBG-DR) VALUNTARY HOME BUYOUT PROGRAM – U.S. DEPARTMENT OF HOUSING AND URBAN DEVELOPMENT (HUD)**
Monroe County Planning & Environmental Resources – 102050 Overseas Highway, Key Largo, FL 33037
Cynthia Guerra, MPA, CFM – Acquisitions Manager, VHBP Fair Housing Coordinator - 305-453-8756
 - Professional Surveying Services Agreement (2021 – On Going)
 - FKLS provides all surveying services for the VHBP program.
- **MONROE COUNTY SCHOOL BOARD CONTINUING CONTRACT FOR PROFESSIONAL SURVEYING SERVICES**
Monroe County School District – 1310 United Street, Key West, FI 33040
Douglas Pryor – Facilities Planner - 305-293-1400 x 53465
 - Professional Surveying Services Agreement (2020 – On Going)
 - FKLS provides all surveying services on an as needed basis, in which the survey cost does not exceed \$100,000.00
- **TETRA TECH – CONTINUING CONTRACT FOR KEY WEST PROFESSIONAL ENGINEERING ENVIRONMENTAL SERVICES**
Tetra Tech – 759 S. Federal Highway, Suite 314, Stuart, FI 34994
Dave Frodsham – P.E. – Senior Civil Engineer – 772-781-3400
 - Surveying Team Member on the Key West Professional Engineering Environmental Services Contract (2020-On Going)
 - FKLS provides all surveying services on an as needed basis, including but not limited to: Topographic Surveys, Wetland Mapping & General Mapping.
- **KEYS ENERGY SERVICES CONTINUING CONTRACT FOR PROFESSIONAL SURVEYING SERVICES**
Keys Energy Services – 1001 James Street, Key West, FI 33040
Nick Batty - 305-304-3874
 - Professional Surveying Services Contract (2016 – On Going)
 - Keys Energy Services provided FKLS a “piggy back” contract, utilizing the same terms of the City of Key West contract, to provide all surveying services on an as needed basis, including but not limited to: Boundary / Property Surveys, Right of Way Determinations, Topographic Surveys, FEMA Elevation Certificates, Interpretation of Metes and Bounds Legal Descriptions, Drone Mapping & General Mapping.



FLORIDA KEYS LAND SURVEYING

21460 OVERSEAS HWY, SUITE 4, CUDJOE KEY, FL 33042

PHONE: (305) 394-3690

EMAIL : FKLSeMail@gmail.com

www.floridakeyslandsurveying.net

**ABILITY TO PERFORM SERVICES
EXPEDITIOUSLY AND STAFFING FOR THIS
PROJECT**



FLORIDA KEYS LAND SURVEYING

21460 OVERSEAS HWY, SUITE 4, CUDJOE KEY, FL 33042

PHONE: (305) 394-3690

EMAIL : FKLSemail@gmail.com

www.floridakeyslandsurveying.net

Florida Keys Land Surveying, LLC is a state of Florida registered professional land surveying firm located in the lower Florida Keys. We are a registered Minority owned Business. Eric Isaacs and Matthew Blomberg are the two corporate members of Florida Keys Land Surveying, LLC. Eric Isaacs is the Managing Member, in addition to being the Responsible Surveyor in Charge.

Being that Florida Keys Land Surveying, LLC is a local Florida Keys Minority Owned Business, all work is handled through our office located at 21460 Overseas Highway, Suite 4, Cudjoe Key, FL 33042.

Because our firm is local, the Responsible Surveyor in charge, Eric Isaacs, the Operation Manager, Matthew Blomberg, and the Project Managers Donald Fletchall and Andrew Hickin are always available to conference with City of Key West staff to discuss project requirements as well as facilitate the work being completed in a timely manner.

Florida Keys Land Surveying, LLC has multiple crews that are in the field servicing Monroe County daily. This allows for unsurpassed collaboration between our staff and the City of Key West staff. All of our field crews are employees of Florida Keys Land Surveying, LLC and operate under the direct supervision of Eric Isaacs and Matthew Blomberg. We believe that we can better serve the Florida Keys utilizing our local knowledge and contacts while living and working in the Florida Keys full time. We do not have to schedule a crew to travel to Monroe County and complete the task at hand, being that we only serve Monroe County, we have multiple crews in the field every day in Monroe County. We feel this best positions us to serve our clients in Monroe County in a timely manner with the best service that we can.

Attached is a chart indicating how the flow of work will be handled between the client and Florida Keys Land Surveying.



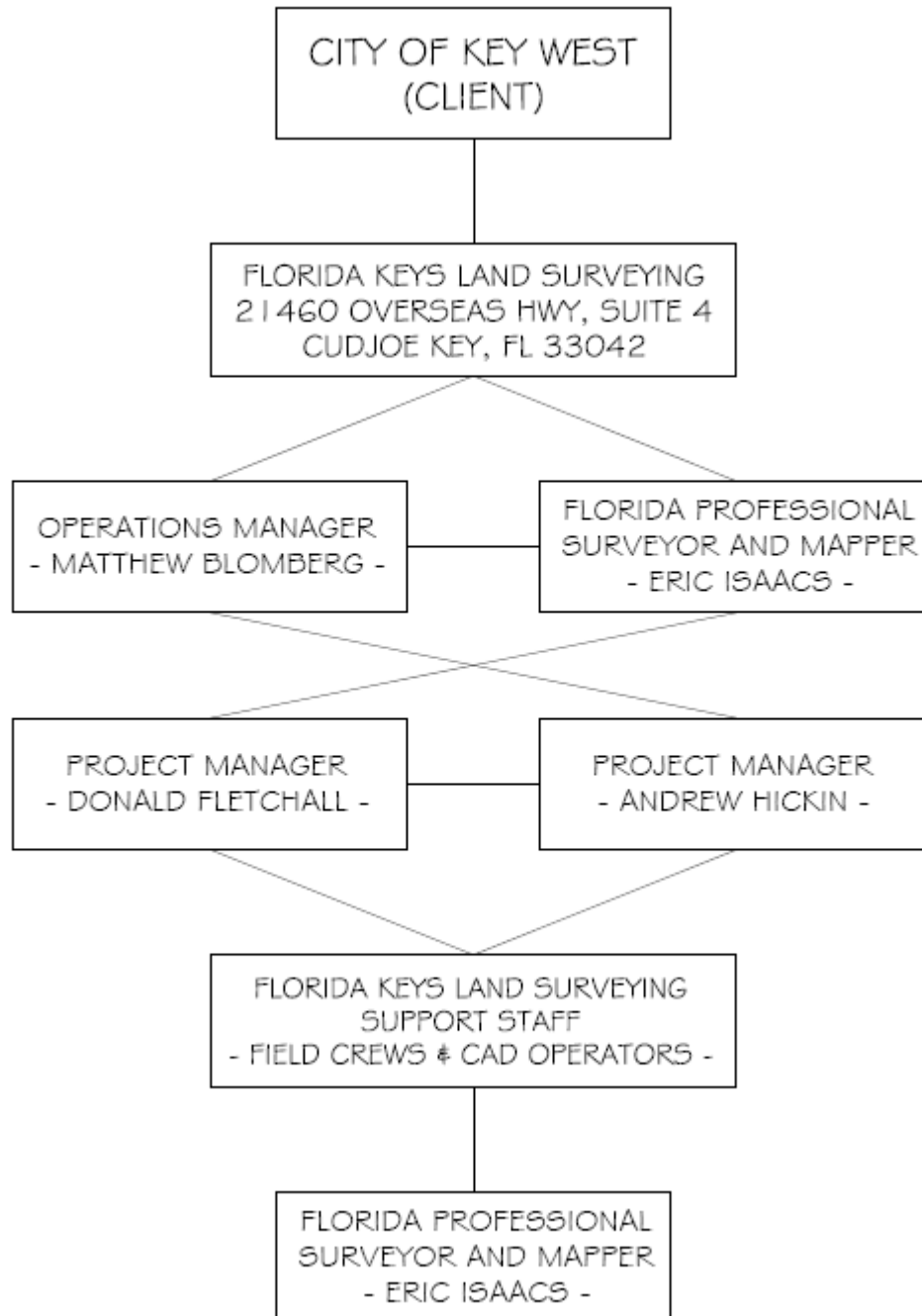
FLORIDA KEYS LAND SURVEYING

21460 OVERSEAS HWY, SUITE 4, CUDJOE KEY, FL 33042

PHONE: (305) 394-3690

EMAIL : FKLSeMail@gmail.com

www.floridakeyslandsurveying.net





FLORIDA KEYS LAND SURVEYING

21460 OVERSEAS HWY, SUITE 4, CUDJOE KEY, FL 33042

PHONE: (305) 394-3690

EMAIL : FKLSeMail@gmail.com

www.floridakeyslandsurveying.net

INTERNAL PEER REVIEW PROCEDURES



FLORIDA KEYS LAND SURVEYING

21460 OVERSEAS HWY, SUITE 4, CUDJOE KEY, FL 33042

PHONE: (305) 394-3690

EMAIL : FKLSemail@gmail.com

www.floridakeyslandsurveying.net

Florida Keys Land Surveying, LLC implements a number of policies and procedures in order to control and assure quality in our survey projects. First a comprehensive field or phone conference is done with the client to ensure that the scope of work is accurately understood by both parties. All available information is researched by the project manager, so the field crew can be fully prepared for the site conditions and have all the necessary data required to begin the survey project. A planning session is then scheduled, involving the project manager and the party chief. Survey methods are selected based on the site conditions and project scope. The methodology agreed upon is then peer reviewed by another project manager, party chief or the responsible surveyor in charge.

The field work is completed by the field crew under the direct supervision of the project party chief. All the field work is completed utilizing the agreed upon methodology including check shots throughout the project, such as RTK or conventional radial ties to independent control points. If any of these checks show results outside the error tolerance for the project at hand, all work is stopped until the problem can be found and rectified. Party chiefs are directed to contact the project manager if any such issues are discovered, so that the project manager can help to quickly resolve the issue. All field data collectors have sim cards which allow for direct communication of data from the field to the project manager in the office.

After the project field work is completed, project managers discuss the field results with the party chief. Once the field work is downloaded the project manager checks all the field data and compares the results to the project scope to insure that the required data has been collected, and that all of the scope requirements are being met.

Drafting is accomplished on all projects by a draftsman who is experienced in the type of work being performed, and who has been kept informed of any special circumstances or challenges of the particular project. The party chief and the field crew examine all map products at every step of the mapping process to assure that the final product represents the actual field conditions.



FLORIDA KEYS LAND SURVEYING

21460 OVERSEAS HWY, SUITE 4, CUDJOE KEY, FL 33042

PHONE: (305) 394-3690

EMAIL : FKLSemail@gmail.com

www.floridakeyslandsurveying.net

Final map products are then carefully reviewed by the project manager, and verified for accuracy before the product is considered finalized.

A final check of the entire project process including all field notes, field data, drafting and the final product is then performed using a peer review process by another project manager and or party chief. Once the peer review process is completed and signed off on by the reviewing party the final product and all the supporting project data is sent to the responsible surveyor in charge for an additional comprehensive final review and signature of the deliverable.



FLORIDA KEYS LAND SURVEYING

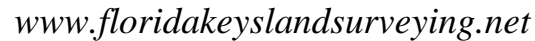
21460 OVERSEAS HWY, SUITE 4, CUDJOE KEY, FL 33042

PHONE: (305) 394-3690

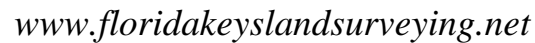
EMAIL : FKLSemail@gmail.com

www.floridakeyslandsurveying.net

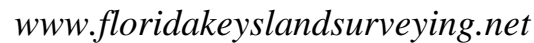
EXAMPLES OF RELEVANT SURVEY PROJECTS



This project was a Specific Purpose Survey to illustrate topographic data, including Authoring a new Metes and Bounds Legal Description and a real time Geo-Referenced aerial ortho image created by Florida Keys Land Surveying, LLC using photogrammetric methods with our Drone technology.



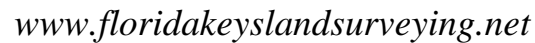
This project was a Topographic Survey of Tommy Roberts Stadium, Key West, Florida.



This project was a topographic survey mapping a portion of the 1400 Block of Duval Street, locating all improvements inside the survey area for future design purposes.



This project was an ALTA / NSPS Land Title Survey of the Faro Blanco Resort in Marathon, Florida.



This project was a topographic survey of Greene Street, Key West, locating all improvements inside the survey area for future design purposes.



FLORIDA KEYS LAND SURVEYING

21460 OVERSEAS HWY, SUITE 4, CUDJOE KEY, FL 33042

PHONE: (305) 394-3690

EMAIL : FKLSeMail@gmail.com

www.floridakeyslandsurveying.net

HIGHLIGHTED PROJECT

PROJECT NAME:

Key West Historic Seaport, Key West, Monroe County, State of Florida

CLIENT:

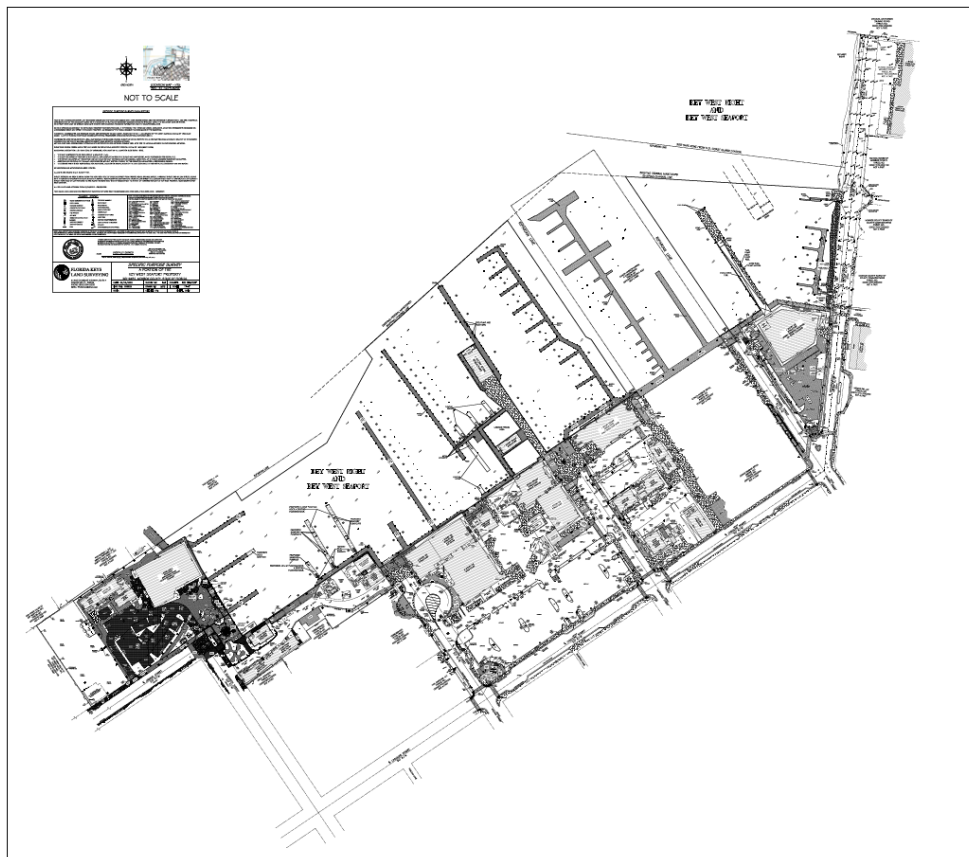
Karen Olson
City of Key West

FKLS ASSIGNED STAFF:

Eric Isaacs, Matthew Blomberg, Don Fletchall & Andrew Hicken

DATE OF COMPLETION:

September 16, 2022



PROJECT DESCRIPTION:

This project was a complete Boundary Survey of all the Key West Seaport, updating and combining previous surveys completed.



FLORIDA KEYS LAND SURVEYING

21460 OVERSEAS HWY, SUITE 4, CUDJOE KEY, FL 33042

PHONE: (305) 394-3690

EMAIL : FKLSeMail@gmail.com

www.floridakeyslandsurveying.net

RFQ RESPONSE DOCUMENTS



FLORIDA KEYS LAND SURVEYING

21460 OVERSEAS HWY, SUITE 4, CUDJOE KEY, FL 33042

PHONE: (305) 394-3690

EMAIL : FKLSemail@gmail.com

www.floridakeyslandsurveying.net

ANTI-KICKBACK AFFIDAVIT

STATE OF FLORIDA)

: SS

COUNTY OF MONROE)

I, the undersigned hereby duly sworn, depose and say that no portion of the sum herein bid will be paid to any employees of the City of Key West as a commission, kickback, reward or gift, directly or indirectly by me or any member of my firm or by an officer of the corporation.

By: _____

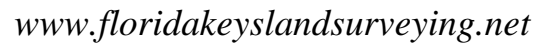
Sworn and subscribed before me this

27th day of March, 2023.

NOTARY PUBLIC, State of Florida at Large

My Commission Expires: 01.17.2025







FLORIDA KEYS LAND SURVEYING

21460 OVERSEAS HWY, SUITE 4, CUDJOE KEY, FL 33042

PHONE: (305) 394-3690

EMAIL : FKLSeMail@gmail.com

www.floridakeyslandsurveying.net

SWORN STATEMENT UNDER SECTION 287.133(3)(a) FLORIDA STATUTES ON PUBLIC ENTITY CRIMES

THIS FORM MUST BE SIGNED IN THE PRESENCE OF A NOTARY PUBLIC OR OTHER OFFICE
AUTHORIZED TO ADMINISTER OATHS.

1. This sworn statement is submitted with Bid, Bid or Contract No. RFQ# 23-004 for
Professional Surveying Services, March 2023
2. This sworn statement is submitted by Florida Keys Land Surveying, LLC
(Name of entity submitting sworn statement)
whose business address is 21460 Overseas Hwy, Suite 4
Cudjoe Key, Florida 33042 and (if applicable) its Federal
Employer Identification Number (FEIN) is 46-3045721 (If the entity has no FEIN,
include the Social Security Number of the individual signing this sworn statement.)
3. My name is Eric Isaacs and my relationship to
(Please print name of individual signing)
the entity named above is President.
4. I understand that a "public entity crime" as defined in Paragraph 287.133(1)(g), Florida Statutes, means a violation of any state or federal law by a person with respect to and directly related to the transaction of business with any public entity or with an agency or political subdivision of any other state or with the United States, including but not limited to, any Bid or contract for goods or services to be provided to any public entity or an agency or political subdivision of any other state or of the United States and involving antitrust, fraud, theft, bribery, collusion, racketeering, conspiracy, material misrepresentation.
5. I understand that "convicted" or "conviction" as defined in Paragraph 287.133(1)(b), Florida Statutes, means a finding of guilt or a conviction of a public entity crime, with or without an adjudication of guilt, in any federal or state trial court of record relating to charges brought by indictment information after July 1, 1989, as a result of a jury verdict, nonjury trial, or entry of a plea of guilty or nolo contendere.
6. I understand that an "affiliate" as defined in Paragraph 287.133(1)(a), Florida Statutes, means
 1. A predecessor or successor of a person convicted of a public entity crime: or
 2. An entity under the control of any natural person who is active in the management of the entity and who has been convicted of a public entity crime. The term "affiliate" includes those officers, directors, executives, partners, shareholders, employees, members, and agents who are active in the management of an affiliate. The ownership by one person of shares constituting controlling interest in another person, or a pooling of equipment or income among persons when not for fair market value under an arm's length agreement, shall be a prima facie case that one person controls another person. A person who knowingly enters into a joint venture with a person who has been convicted of a public entity crime in Florida during the preceding 36 months shall be considered an affiliate.
7. I understand that a "person" as defined in Paragraph 287.133(1)(8), Florida Statutes, means any natural person or entity organized under the laws of any state or of the United States with the legal power to enter



FLORIDA KEYS LAND SURVEYING

21460 OVERSEAS HWY, SUITE 4, CUDJOE KEY, FL 33042

PHONE: (305) 394-3690

EMAIL : FKLSemail@gmail.com

www.floridakeyslandsurveying.net

into a binding contract and which Bids or applies to Bid on contracts for the provision of goods or services let by a public entity, or which otherwise transacts or applies to transact business with a public entity. The term "person" includes those officers, directors, executives, partners, shareholders, employees, members, and agents who are active in management of an entity.

8. Based on information and belief, the statement, which I have marked below, is true in relation to the entity submitting this sworn statement. (Please indicate which statement applies.)

☒ Neither the entity submitting this sworn statement, nor any officers, directors, executives, partners, shareholders, employees, members, or agents who are active in management of the entity, nor any affiliate of the entity have been charged with and convicted of a public entity crime subsequent to July 1, 1989.

☐ The entity submitting this sworn statement, or one or more of the officers, directors, executives, partners, shareholders, employees, members, or agents who are active in management of the entity, or an affiliate of the entity has been charged with and convicted of a public entity crime subsequent to July 1, 1989, AND (Please indicate which additional statement applies.)

☐ There has been a proceeding concerning the conviction before a hearing of the State of Florida, Division of Administrative Hearings. The final order entered by the hearing officer did not place the person or affiliate on the convicted vendor list. (Please attach a copy of the final order.)

☐ The person or affiliate was placed on the convicted vendor list. There has been a subsequent proceeding before a hearing officer of the State of Florida, Division of Administrative Hearings. The final order entered by the hearing officer determined that it was in the public interest to remove the person or affiliate from the convicted vendor list. (Please attach a copy of the final order.)

☐ The person or affiliate has not been put on the convicted vendor list. (Please describe any action taken by or pending with the Department of General Services.)

(Signature) Eric Isaacs - President

STATE OF Florida (Date)

COUNTY OF Monroe

PERSONALLY APPEARED BEFORE ME, the undersigned authority,

Eric Isaacs

(Name of individual signing)

who, after first being sworn by me, affixed his/her signature in the

space provided above on this 27th day of March, 2023.

My commission expires
NOTARY PUBLIC



RFQ 23-004



FLORIDA KEYS LAND SURVEYING

21460 OVERSEAS HWY, SUITE 4, CUDJOE KEY, FL 33042

PHONE: (305) 394-3690

EMAIL : FKLSemail@gmail.com

www.floridakeyslandsurveying.net

CITY OF KEY WEST INDEMNIFICATION FORM

CONTRACTOR agrees to protect, defend, indemnify, save and hold harmless The City of Key West, all its Departments, Agencies, Boards, Commissions, officers, City's Consultant, agents, servants and employees, including volunteers, from and against any and all claims, debts, demands, expense and liability arising out of injury or death to any person or the damage, loss of destruction of any property which may occur or in any way grow out of any act or omission of the CONTRACTOR, its SUBCONTRACTOR(S), its agents, servants, and employees, or any and all costs, expense and/or attorney fees incurred by the City as a result of any claim, demands, and/or causes of action except of those claims, demands, and/or causes of action arising out of the negligence of The City of Key West, all its Departments, Agencies, Boards, Commissions, officers, agents, servants and employees. The CONTRACTOR agrees to investigate, handle, respond to, provide defense for and defend any such claims, demand, or suit at its sole expense and agrees to bear all other costs and expenses related thereto, even if it (claims, etc.) is groundless, false or fraudulent. The City of Key West does not waive any of its sovereign immunity rights, including but not limited to, those expressed in Section 768.28, Florida Statutes. Nothing contained herein shall be construed to alter or waive the City's sovereign immunity under 768.28, Florida Statutes. CONTRACTOR understands and agrees that any and all liabilities regarding the use of any subcontractor for services related to this agreement shall be borne solely by the CONTRACTOR. The indemnification obligations under the Contract shall not be restricted in any way by any limitation on the amount or type of damages, compensation, or benefits payable by or for the CONTRACTOR under workers' compensation acts, disability benefits acts, or other employee benefits acts, and shall extend to and include any actions brought by or in the name of any employee of the CONTRACTOR or of any third party to whom CONTRACTOR may subcontract a part or all of the Work. Ten dollars of the consideration paid by the City is acknowledged by CONTRACTOR as separate, good and sufficient consideration for this indemnification.

This indemnification shall be interpreted to comply with Section 725.06 and 725.08, Florida Statutes.

These indemnifications shall survive the term of this agreement. In the event that any action or proceeding is brought against the City of Key West by reason of such claim or demand, CONTRACTOR shall, upon written notice from the City of Key West, resist and defend such action or proceeding by counsel satisfactory to the City of Key West.

The indemnification provided above shall obligate CONTRACTOR to defend at its own expense to and through appellate, supplemental or bankruptcy proceeding, or to provide for such defense, at the City of Key West's option, any and all claims of liability and all suits and actions of every name and description covered above which may be brought against the City of Key West whether performed by CONTRACTOR, or persons employed or utilized by CONTRACTOR. The CONTRACTOR'S obligation to indemnify, defend and pay for the defense of the CITY, or at the CITY's option, to participate and associate with the CONTRACTOR in the defense and trial of any claim and any related settlement negotiations, shall be triggered immediately upon the CONTRACTOR'S receipt of the CITY'S notice of



FLORIDA KEYS LAND SURVEYING

21460 OVERSEAS HWY, SUITE 4, CUDJOE KEY, FL 33042

PHONE: (305) 394-3690

EMAIL : FKLSemail@gmail.com

www.floridakeyslandsurveying.net

claim for indemnification. The notice of claim for indemnification shall be deemed received if the CITY sends the notice in accordance with the formal notice mailing requirements set forth in this AGREEMENT.

The CONTRACTOR'S evaluation of liability or its inability to evaluate liability shall not excuse the CONTRACTOR'S duty to defend and indemnify the CITY under the provisions of this AGREEMENT. Only an adjudication or judgment, after the highest appeal is exhausted, specifically finding the CITY was solely negligent shall excuse performance of this provision by the CONTRACTOR.

The CONTRACTOR'S obligation under this provision shall not be limited in any way by the agreed upon Contract Price as shown in this agreement, or the CONTRACTOR's limit of or lack of sufficient insurance protection. This indemnification shall continue beyond the date of completion of the work.

COMPANY SEAL

CONTRACTOR: Florida Keys Land Surveying, LLC

Address 21460 Overseas Hwy, Suite 4
Cudjoe Key, Florida 33042

Signature

Eric Isaacs
Print Name

03/27/2023
Date

President
Title

NOTARY FOR THE CONTRACTOR

STATE OF Florida

COUNTY OF Monroe





FLORIDA KEYS LAND SURVEYING

21460 OVERSEAS HWY, SUITE 4, CUDJOE KEY, FL 33042

PHONE: (305) 394-3690

EMAIL : FKLSemail@gmail.com

www.floridakeyslandsurveying.net

The foregoing instrument was acknowledged before me by means of ☒ physical presence, or
☐ online notarization, this 27th day of March, 2023, by
Eric Isaacs, authorized person of Florida Keys Land Surveying on behalf of
the Company.



Signature of Notary Public-State of Florida

WENDY S. GONZALEZ
Name of Notary

Personally Known ☒

OR Produced Identification ☐

Type of Identification
Produced _____



FLORIDA KEYS LAND SURVEYING

21460 OVERSEAS HWY, SUITE 4, CUDJOE KEY, FL 33042

PHONE: (305) 394-3690

EMAIL : FKLSeMail@gmail.com

www.floridakeyslandsurveying.net

EQUAL BENEFITS FOR DOMESTIC PARTNERS AFFIDAVIT

STATE OF Florida)
: SS

COUNTY OF Horse)

I, the undersigned hereby duly sworn, depose and say that the firm of Florida Keys Land Surveying provides benefits to domestic partners of its employees on the same basis as it provides benefits to employees' spouses per City of Key West Ordinance Sec. 2-799.

By: [Signature]

Sworn and subscribed before me this

27th day of March, 2023.

[Signature]
NOTARY PUBLIC, State of Florida at Large

My Commission Expires: 01.17.2025





FLORIDA KEYS LAND SURVEYING

21460 OVERSEAS HWY, SUITE 4, CUDJOE KEY, FL 33042

PHONE: (305) 394-3690

EMAIL : FKLSemail@gmail.com

www.floridakeyslandsurveying.net

PROFESSIONAL LICENSES



FLORIDA KEYS LAND SURVEYING

21460 OVERSEAS HWY, SUITE 4, CUDJOE KEY, FL 33042

PHONE: (305) 394-3690

EMAIL : FKLSeMail@gmail.com

www.floridakeyslandsurveying.net



Florida Department of Agriculture and Consumer Services
Division of Consumer Services
Board of Professional Surveyors and Mappers
2005 Apalachee Pkwy Tallahassee, Florida 32399-6500
800HELPFLA(435-7352) or (850) 488-2221

January 7, 2023

ERIC ADLAI ISAACS
PO BOX 1547
KEY WEST, FL 33041-1547

Detach Here

SUBJECT: Professional Surveyor and Mapper License # LS6783

Your application / renewal as a professional surveyor and mapper as required by Chapter 472, Florida Statutes, has been received and processed.

The license appears below and is valid through February 28, 2025.

You are required to keep your information with the Board current. Please visit our website at www.800helpfla.com/psm to create your online account. If you have already created your online account, you can use the website to maintain your license. You can also find other valuable information on the website.

If you have any questions, please do not hesitate to call the Division of Consumer Services, Board of Professional Surveyors and Mappers at 800-435-7352 or 850-488-2221.



Florida Department of Agriculture
and Consumer Services
Board of Professional Surveyors
and Mappers

LS6783

Professional Surveyor and Mapper
ERIC ADLAI ISAACS

IS LICENSED under the provisions of Ch. 472 FS
Expiration date: February 28, 2025

Detach Here



Florida Department of Agriculture and Consumer Services
Division of Consumer Services
Board of Professional Surveyors and Mappers
2005 Apalachee Pkwy Tallahassee, Florida 32399-6500

License No.: **LS6783**
Expiration Date February 28, 2025

Professional Surveyor and Mapper License

Under the provisions of Chapter 472, Florida Statutes

ERIC ADLAI ISAACS
PO BOX 1547
KEY WEST, FL 33041-1547

WILTON SIMPSON
COMMISSIONER OF AGRICULTURE



FLORIDA KEYS LAND SURVEYING

21460 OVERSEAS HWY, SUITE 4, CUDJOE KEY, FL 33042

PHONE: (305) 394-3690

EMAIL : FKLSeMail@gmail.com

www.floridakeyslandsurveying.net



Florida Department of Agriculture and Consumer Services
Division of Consumer Services
Board of Professional Surveyors and Mappers
2005 Apalachee Pkwy Tallahassee, Florida 32399-6500
800HELPFLA(435-7352) or (850) 488-2221

January 12, 2023

FLORIDA KEYS LAND SURVEYING LLC
PO BOX 1547
KEY WEST, FL 33041-1547

SUBJECT: Professional Surveyor and Mapper Business Certificate # LB7847

Your application / renewal as a professional surveyor and mapper business as required by Chapter 472, Florida Statutes, has been received and processed.

The license appears below and is valid through February 28, 2025.

You are required to keep your information with the Board current. Please visit our website at www.800helpfla.com/psm to create your online account. If you have already created your online account, you can use the website to maintain your license. You can also find other valuable information on the website.

If you have any questions, please do not hesitate to call the Division of Consumer Services, Board of Professional Surveyors and Mappers at 800-435-7352 or 850-488-2221.

Detach Here



Florida Department of Agriculture and Consumer Services
Division of Consumer Services
Board of Professional Surveyors and Mappers
2005 Apalachee Pkwy Tallahassee, Florida 32399-6500

License No.: **LB7847**

Expiration Date February 28, 2025

Professional Surveyor and Mapper Business License

Under the provisions of Chapter 472, Florida Statutes

FLORIDA KEYS LAND SURVEYING LLC
21460 OVERSEAS HWY STE 4
CUDJOE KEY, FL 33042-4139

WILTON SIMPSON
COMMISSIONER OF AGRICULTURE



FLORIDA KEYS LAND SURVEYING

21460 OVERSEAS HWY, SUITE 4, CUDJOE KEY, FL 33042

PHONE: (305) 394-3690

EMAIL : FKLSemail@gmail.com

www.floridakeyslandsurveying.net

2022 / 2023 MONROE COUNTY BUSINESS TAX RECEIPT EXPIRES SEPTEMBER 30, 2023

Business Name: FLORIDA KEYS LAND SURVEYING LLC

RECEIPT# 46110-107053

Owner Name: ERIC ISAACS

Business Location: 19960 OVERSEAS HWY
SUGARLOAF KEY, FL 33042

Mailing Address: PO BOX 1547
KEY WEST, FL 33041

Business Phone: 305-394-3690
Business Type: PROFESSIONAL (LAND SURVEYING)

1

STATE LICENSE: PSM 6783 LB7847

Tax Amount	Transfer Fee	Sub-Total	Penalty	Prior Years	Collection Cost	Total Paid
30.00	0.00	30.00	0.00	0.00	0.00	30.00

Paid 108-21-00002123 07/08/2022 30.00

THIS BECOMES A TAX RECEIPT
WHEN VALIDATED

Sam C. Steele, CFC, Tax Collector
PO Box 1129, Key West, FL 33041

THIS IS ONLY A TAX.
YOU MUST MEET ALL
COUNTY AND/OR
MUNICIPALITY
PLANNING, ZONING AND
LICENSING
REQUIREMENTS.

MONROE COUNTY BUSINESS TAX RECEIPT P.O. Box 1129, Key West, FL 33041-1129 EXPIRES SEPTEMBER 30, 2023

Business Name: FLORIDA KEYS LAND SURVEYING LLC

RECEIPT# 46110-107053

Owner Name: ERIC ISAACS

Business Location: 19960 OVERSEAS HWY
SUGARLOAF KEY, FL 33042

Mailing Address: PO BOX 1547
KEY WEST, FL 33041

Business Phone: 305-394-3690
Business Type: PROFESSIONAL (LAND SURVEYING)

1

STATE LICENSE: PSM 6783 LB7847

Tax Amount	Transfer Fee	Sub-Total	Penalty	Prior Years	Collection Cost	Total Paid
30.00	0.00	30.00	0.00	0.00	0.00	30.00

Paid 108-21-00002123 07/08/2022 30.00



FLORIDA KEYS LAND SURVEYING

21460 OVERSEAS HWY, SUITE 4, CUDJOE KEY, FL 33042

PHONE: (305) 394-3690

EMAIL : FKLSemail@gmail.com

www.floridakeyslandsurveying.net

CITY OF KEY WEST, FLORIDA

Business Tax Receipt

This Document is a business tax receipt
Holder must meet all City zoning and use provisions.
P.O. Box 1409, Key West, Florida 33040 (305) 809-3955

Business Name FLORIDA KEYS LAND SURVEYING LLC

Location Addr 19960 OVERSEAS HWY

Lic NBR/Class 26984

STATE LICENSED PROFESSIONAL

Issued Date 9/17/2021

Expiration Date: September 30, 2023

ATTORNEY, PHYSICIAN OR OTHER STATE LICENSED
PROFESSIONAL

Comments: LAND SURVEYOR

Restrictions: AG #LB7847 (2/28/23)

FLORIDA KEYS LAND SURVEYING
LLC
PO BOX 1547
KEY WEST, FL 33041

This document must be prominently displayed.

ISAACS, ERIC



FLORIDA KEYS LAND SURVEYING

21460 OVERSEAS HWY, SUITE 4, CUDJOE KEY, FL 33042

PHONE: (305) 394-3690

EMAIL : FKLSemail@gmail.com

www.floridakeyslandsurveying.net

ADDENDUM NO. 1



FLORIDA KEYS LAND SURVEYING

21460 OVERSEAS HWY, SUITE 4, CUDJOE KEY, FL 33042

PHONE: (305) 394-3690

EMAIL : FKLSemail@gmail.com

www.floridakeyslandsurveying.net



THE CITY OF KEY WEST

Post Office Box 1409 Key West, FL 33041-1409 (305) 809-3866

ADDENDUM NO. 1

Professional Surveying Services RFQ 23-004

This addendum is issued as supplemental information to the bid package for clarification of certain matters of both a general and a technical nature. The referenced Request for Qualifications (RFQ) package is hereby amended in accordance with the following items:

Questions: Page 2 of the RFQ where states: Qualifications shall be limited to 20 double-sided pages, not including

A.3 Qualifications Criteria.

Does this mean section A.3 Qualifications Criteria is not part of the 20 double-sided pages? (We have various staff (resumes), and projects will exceed the 20-page limit)

In reference to the Tab Sections of the RFQ, are the tabs (dividers) included in the 20 double-sided pages?

On page two, right after Section A.2 - the RFQ says, "Qualification packages shall be limited to 20 double-sided pages not including" is there supposed to be anything after the word included?

At the end of Section C.1, the RFQ says, "Total proposal length (not including required forms) will not exceed 20 double-sided (40 single) pages." Should firms follow the directions on this page limit section or the page limit information after Section A.2?

Answer: Page 2 should state and be followed: "Qualifications shall be limited to 20 double-sided pages or 40 single pages, not including required forms or tabs."

Questions: Page 4 of the RFQ Section C. Submission Detail: C.1 Response Information states Examples of five (5) traffic engineering projects. This is a Surveying RFQ. Are you looking for surveying projects or traffic engineering projects?

Section C.1 - "Response Information," says firms are to provide FDOT experience and examples for Traffic Engineering. Is this a typo in the RFQ, or should firms submit experience with FDOT and examples for Traffic Engineering?

Answer: Page 4 C.1 should read "Examples of five (5) survey projects specific to this RFQ, completed within past 5 years."

Also, under C1. Disregard the statement "Experience with Key West, Monroe County and Florida DOT District 6."

Question: Also, will you consider extending the Due date for this RFQ.

Answer: The Due Date is March 29, 2023



FLORIDA KEYS LAND SURVEYING

21460 OVERSEAS HWY, SUITE 4, CUDJOE KEY, FL 33042

PHONE: (305) 394-3690

EMAIL : FKLSemail@gmail.com

www.floridakeyslandsurveying.net

Question: There are three different outlines for the proposal preparation (A.2, C.1, and C.12); which should firms follow?

Answer: Please use A.2 outline on Page 1.

Question: In reference to the LOCAL VENDOR CERTIFICATION, we have an office in Key Largo and a Business Tax with Monroe County. Will this be ok to submit?

Answer: Yes, however: Page 5 C.7 License Requirements reads:

“The selected respondent will also be required to obtain and maintain a City of Key West Business Tax Receipt for the duration of the work.”

All Bidders shall acknowledge receipt and acceptance of this Addendum No. 1 with Attachment by submitting the addendum with their proposal. Proposals submitted without acknowledgement or without this Addendum may be considered non-responsive.

Signature

Florida Keys Land Surveying, LLC

Name of Business