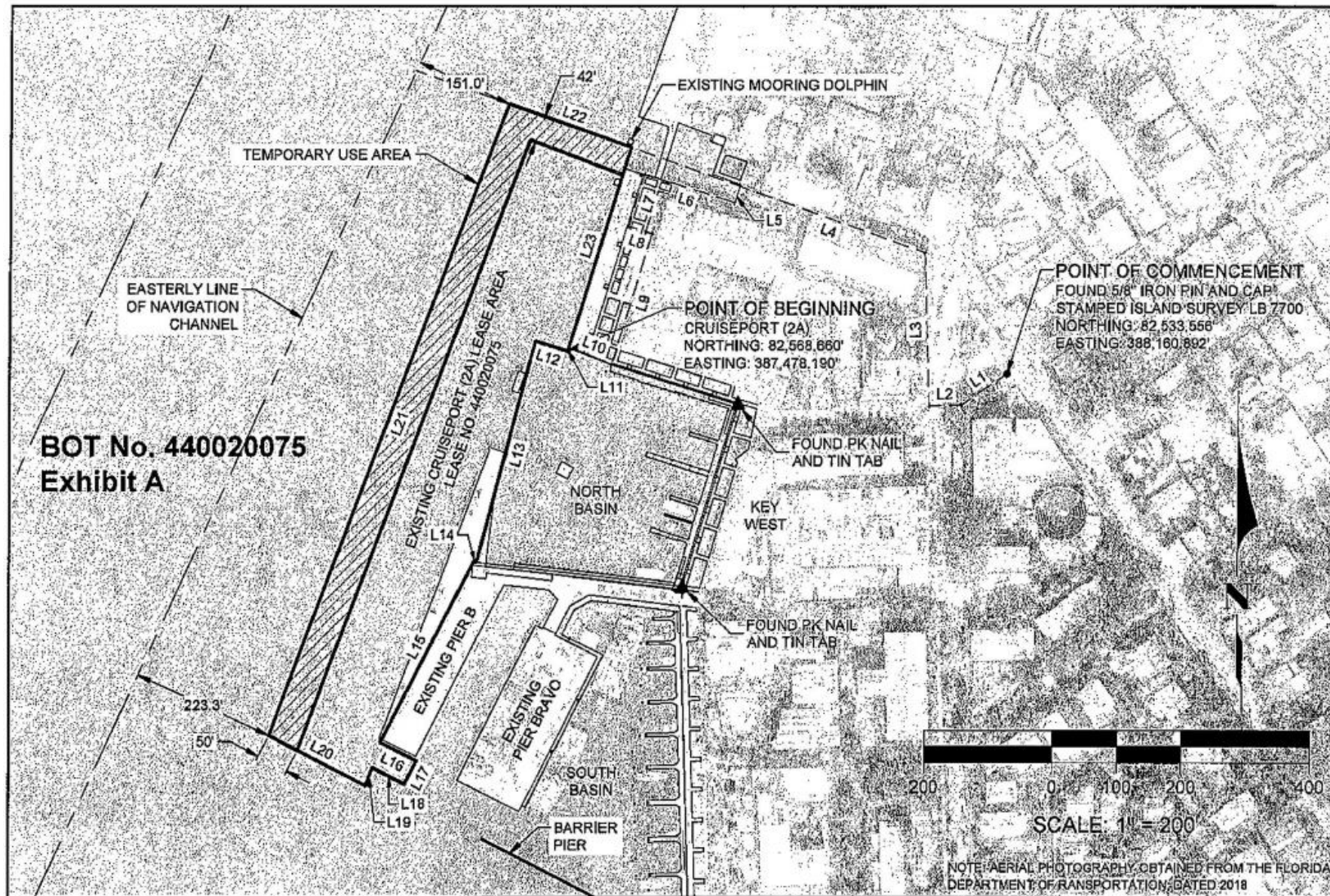


# Current Pier B Temporary Use Area 7/1/2022 – 7/1/2023

Added hashed area. Adds 42 ft length and 50 ft width to original lease.

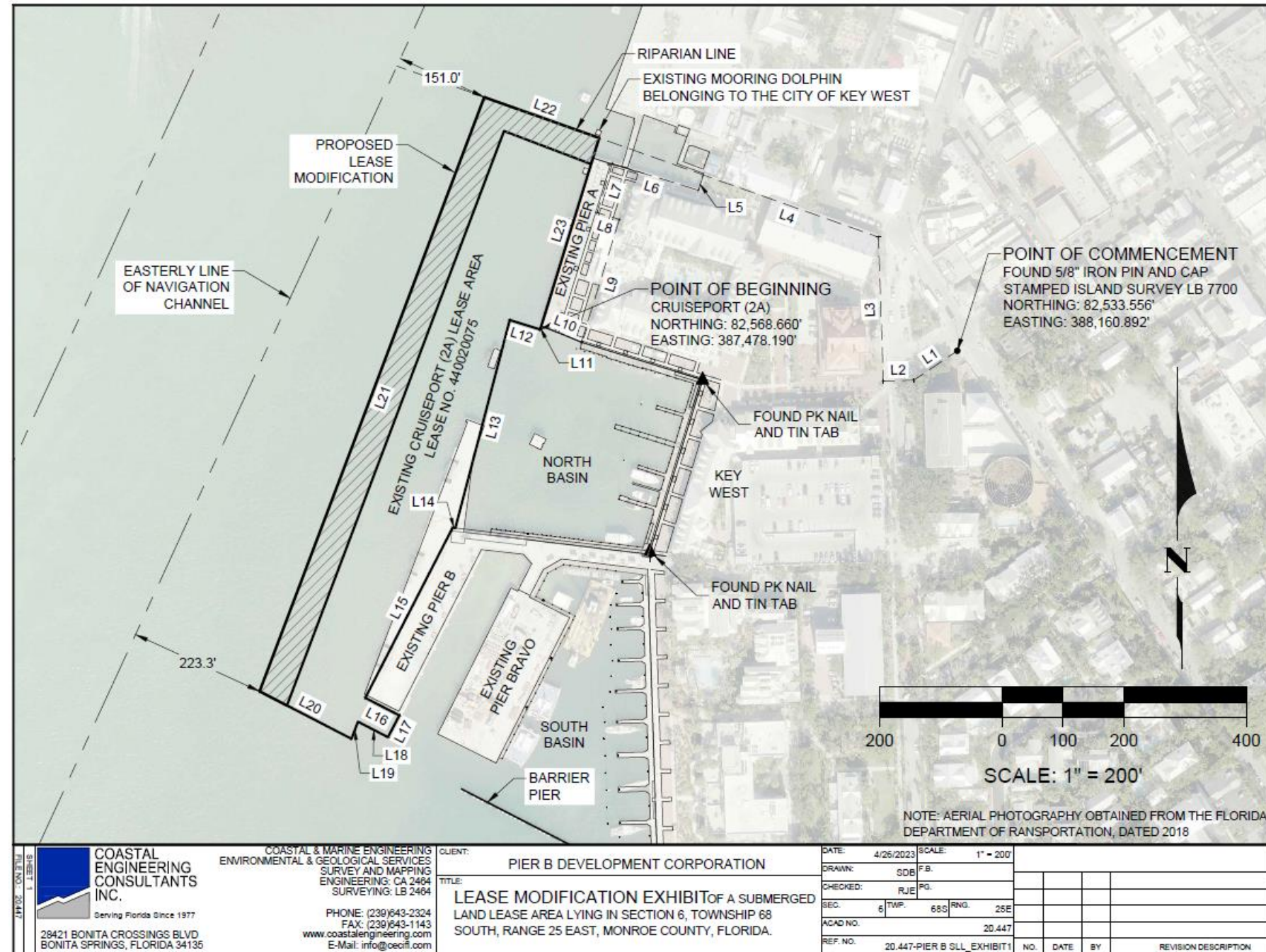


 <b>COASTAL ENGINEERING CONSULTANTS INC.</b> A CECI GROUP COMPANY Serving Florida Since 1977 28421 BONITA CROSSINGS BLVD BONITA SPRINGS, FLORIDA 34135	COASTAL & MARINE ENGINEERING ENVIRONMENTAL & GEOLOGICAL SERVICES SURVEY AND MAPPING ENGINEERING: CA 2464 SURVEYING: LB 2464  PHONE: (239) 843-2324 FAX: (239) 643-1143 www.coastal-engineering.com E-Mail: info@ceci.com	CLIENT: <b>PIER B DEVELOPMENT CORPORATION</b>	DATE: 06/30/2022 DRAWN: SDB/KAK CHECKED: RJE SEC: 8 ACADNO: 20.447 REF. NO:	SCALE: 1" = 200' F.B. PG. TWP. 68S RNG. 25E 20.447		
	TITLE: <b>TEMPORARY USE AREA EXHIBIT OF A SUBMERGED LAND LEASE AREA LYING IN SECTION 6, TOWNSHIP 68 SOUTH, RANGE 25 EAST, MONROE COUNTY, FLORIDA.</b>					
			NO.	DATE	BY	REVISION DESCRIPTION



# Pier B Requested Permanent Lease Area

Same as current temporary use area.



# How Many Ships Does Expanded Area Affect? (May 2022 – Sept 2023)

Ships May 2022 through Sept 2023

Name	# of Visits	Length (ft)	Width (ft)	# of Visits
Brilliance of the Seas	7	958	105	
Carnival Conquest	29	953	116	29
Carnival Dream	35	1004	122	35
Carnival Ecstasy	1	855	103	
Carnival Glory	13	952	116	13
Carnival Paradise	3	855	103	
Carnival Sunrise	14	893	116	14
Celebrity Summit	1	964	105	
Celebrity Apex	12	1004	128	12
Celebrity Constellation	3	965	106	
Celebrity Equinox	6	1041	121	6
Celebrity Infinity	21	964	105	
Celebrity Reflection	1	1047	123	1
Celebrity Silhouette	10	1047	121	10
Celebrity Summit	22	964	105	
Grandeur of the Seas	9	915	106	
Jewel of the Seas	2	962	105	
Marella Discovery	7	866	105	
MSC Magnifica	15	963	106	
Norwegian Dawn	5	965	125	5
Norwegian Pearl	1	965	125	1
Norwegian Sky	5	848	123	5
Radiance of the Seas	3	961	105	
Rhapsody of the Seas	1	915	116	1
Scarlet Lady	34	909	125	34
Seabourn Quest	2	650	84	
Seabourn Sojourn	1	650	84	
Seven Seas Navigator	1	560	81	
Silver Dawn	1	698	86	
Star Legend	1	523	67	
Valiant Lady	1	912	125	1
Viking Star	8	748	95	

Max      Length      Width  
1005      ~110

Note: Data in this chart is from May 2022. Actual ship visits may have varied slightly.

275

Total

167

Exceed Submerged Land Lease

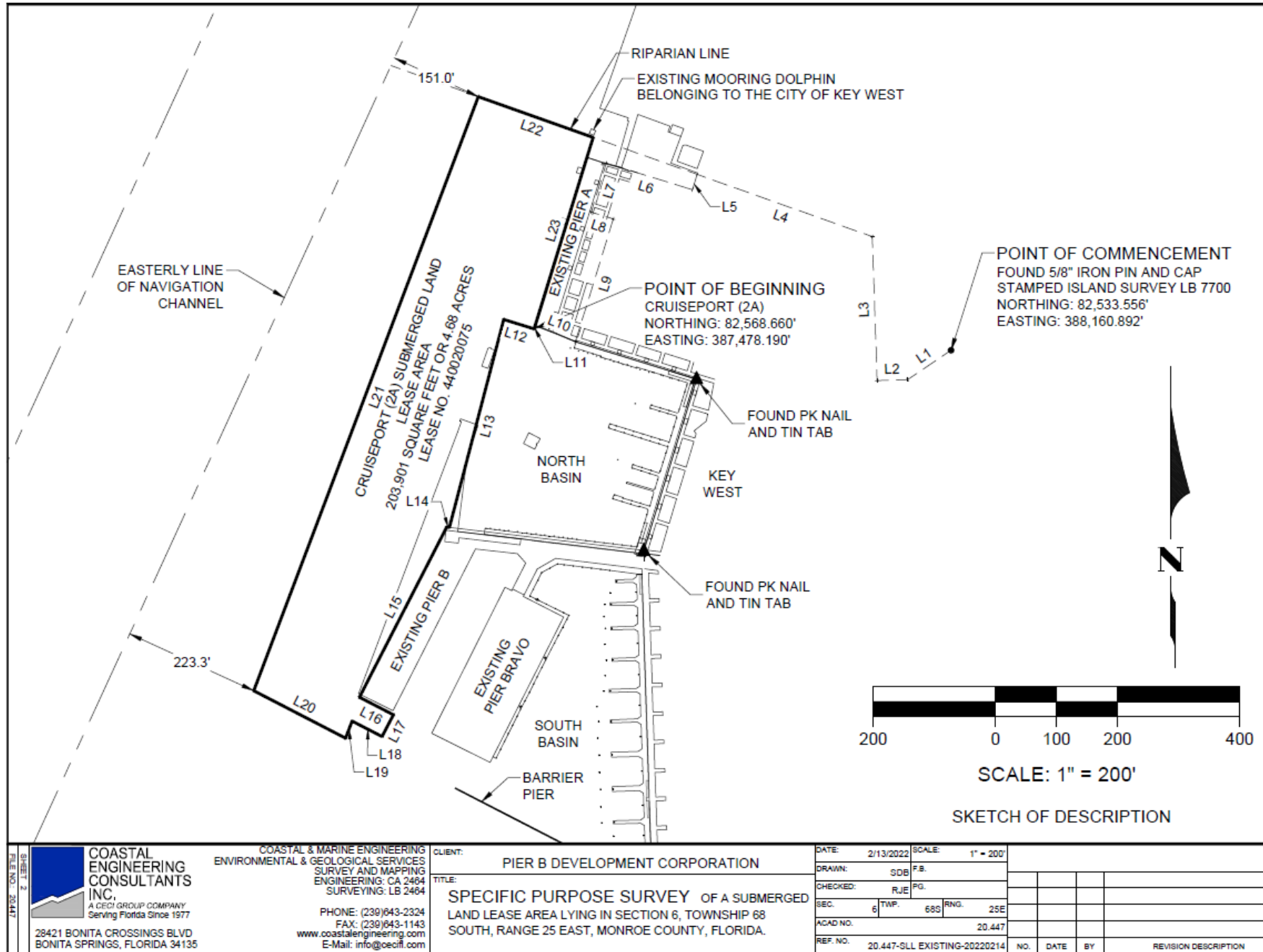


# City's Mallory T-Pier Lease Boundary

Expanded Pier B lease would abut City's Mallory lease.



# Survey for Pier B Application



# Legend

## LXX - LINE TABLE

LINE	BEARING	DISTANCE
L1	S55°59'14"W	85.77'
L2	S88°06'46"W	50.00'
L3	N1°56'59"W	235.87'
L4	N70°26'40"W	304.41'
L5	S16°55'28"W	26.34'
L6	N72°54'10"W	147.59'
L7	S17°07'10"W	83.65'
L8	S72°43'50"E	37.81'
L9	S17°07'10"W	210.00'

## LXX - LINE TABLE

LINE	BEARING	DISTANCE
L10	S68°40'27"E	71.00'
L11	N17°07'10"E	5.29'
L12	N72°51'30"W	52.00'
L13	S14°41'55"W	351.76'
L14	N83°14'07"W	4.17'
L15	S27°13'10"W	313.12'
L16	S62°37'32"E	62.81'
L17	S27°45'56"W	40.21'
L18	N62°41'40"W	55.07'

## LXX - LINE TABLE

LINE	BEARING	DISTANCE
L19	S20°43'37"W	29.95'
L20	N62°41'40"W	169.24'
L21	N20°42'26"E	1039.77'
L22	S70°26'38"E	199.55'
L23	S17°07'06"W	327.89'