



**THE CITY OF KEY WEST**

1300 White Street  
Key West, FL 33040

**ADDENDUM NO. 2 – RE-BID REST BEACH STABILIZATION  
ITB 18-011**

This addendum is issued as supplemental information to the bid package for clarification of certain matters of both a general and a technical nature. The referenced bid package is hereby addended in accordance with the following items:

- Answers to ITB questions
- Revised Page 17 of Proposal Form
- Revised Schedule of Values Sheet
- Approved Replacement Palm List
- Approved Replacement Dicot List
- January 16, 2018 Updated Staff Report (“Tree Plan”)

All Bidders shall acknowledge receipt and acceptance of this Addendum No. 2 by submitting the addendum with their proposal. This Addendum does not alter the bid-opening date of January 24<sup>th</sup>, 2018 at 3:30pm. Proposals submitted without acknowledgement or without this Addendum may be considered non-responsive.

---

Signature

---

Name of Business

## Answers to ITB Questions

1. WILL THERE BE A CHARGE TO THE CONTRACTOR FOR THE STAGING AREA (PROVIDED BY THE CITY OF KEY WEST)?

There will be no charge to the contractor for the staging area, however, contractor responsible for returning parcel to original condition.

2. THE SHEET PILE SPECIFICATION CALLS FOR EZ95 AND THE SCHEDULE OF VALUE LISTS XZ95; WHICH ONE IS TO BE USED?

The construction drawings and bid documents reflect EZ-95 steel sheet piles. The Schedule of Values has been corrected to likewise read EZ-95.

3. SHOULD THE BID OPTIONS (LINE 32-38 OF THE SCHEDULE OF VALUE) BE INCLUDED IN THE DIRECT COSTS (LINE 39 OF THE SCHEDULE OF VALUE) OR AFTER AWARD AND APPROVED BE INCLUDED IN THE CONTRACT? IF TO BE INCLUDED IN THE DIRECT COST SHOULD LINE 33 JUST SHOW AN ADDITIONAL COST TO LINE 13?

The Bid Options should NOT be included in the direct cost, as not all bid options are likely to be considered/approved.

4. DOES THE LUMP SUM NEED TO INCLUDE BID OPTION NUMBERS?

The Bid Option numbers should NOT be included in the lump sum cost.

5. CAN I USE AN ALTERNATIVE SHEET PILE TO EZ-95?

Bidders may propose alternate sheet piling as a deductive alternate. Include deductive alternate price on Revised Page 17 of Proposal Form, and include the alternate sheet pile Product specifications for consideration by Engineer. Bidders that elect to provide an alternate sheet pile bid shall provide a base bid for the EZ-95 sheet pile specified in the plans. Once all bids are received, any alternate sheet pile sections proposed will be evaluated by Engineer to determine equivalency.

6. Relating to tree relocation, the FNGLA directory does not list any FNGLA certified contractors in Monroe County. Please confirm if an ISA Certified Arborist is acceptable.

ISA Certified Arborist is acceptable and preferred.

7. Regarding the Concrete Cap work, please provide details and/or maximum spacing requirements for any desired joints. Drawing sheet C-502, Detail 2, shows an expansion joint in the concrete cap with no spacing requirements noted.

Please refer to the Marine Concrete Specification (Section 03 31 00), Section 3.2 Placing Reinforcement and Joints

### Answers to ITB Questions (Continued)

8. Regarding the bid item “Landscaping – Relocation of 101 Existing Trees On Site by FNGLA Certified Contractor”, with a bid quantity of 5 Days. Please clarify the scope of work for this item and how it is to be paid. Relative to scope, drawing sheets C-104 and C-105 include schedules of trees that may be impacted by construction activities. The total number of trees identified in these schedules is 17 ea., 10 ea. of which are planned to be relocated. This varies significantly from the 101 ea. noted in the bid item description. In terms of pay quantity, the quantity listed is 5 Days. Please confirm the City’s intent to pay this item by the “Day”.

Tree removal/replacement, trimming, and relocation shall be bid as a single lump sum item; please refer to the revised schedule of values, Line No. 27.

9. Is there a specific sod that will be needed to be put down or will there be options? Also, all trees that need to be removed and replaced, what will they need to be replaced with? Can a tree with a larger DBH be replaced with multiple smaller width trees to make up for the difference or does the tree have to be of equal size?

Sod type options will be approved by the Engineer. Attached below are the approved trees lists—removal of palms requires replacement of an approved palm 4 ft tall, removal of trees requires a certain amount of caliper inches of approved trees. If the caliper is 10” it could be 1-10” caliper tree or 10-1” caliper trees or two trees, as long as the total planted equals the 10 required caliper inches. The approved dicot tree list is also approved. For the Rest Beach area it is strongly urged that very high salt tolerant trees or beach berm tree species get replanted in the area (ie: Jamaican Caper, Buttonwood, 7 Year Apple).

[illegible]

# REVISED SCHEDULE OF VALUES SHEET

Line					
1	<b>City of Key West / Rest Beach - 702 LF Seawall w/ Concrete Cap</b>				<b>Jan-18</b>
2	<b>Description</b>	<b>Quantity *</b>	<b>Units</b>	<b>Unit Price</b>	<b>Amount</b>
3					
4	<b>Direct Cost</b>				
5	<b>General - Seawall</b>				
6	Staging Area (provided by City of Key West)	1	LS		
7	Temporary Construction Fencing (6' High, 12' Sections of Chain Link with Wind Screen & Sandbags)	756	LF		
8	Erosion & Sediment Control	1	LS		
9	General Site Preparation & M.O.T.	1	LS		
10	Demo - sidewalks, slabs, wooden decks	22	SF		
11	Site Excavation	15	CY		
12	Beach Quality Fill	100	CY		
13	EZ-95 Steel Sheet Piling (12' long, A-572 including freight)	702	LF		
14	Steel Sheet Piling installation (shore driven)	702	LF		
15	Concrete - Cap, 6,000 PSI, Ext. Aggressive Env., with forms, installed with FDOT Class 5 Finish Coating	118	CY		
16	Rebar - #5, 1.043# per FT, 390 pieces at 20' each = 7800 LF = 8,150 LB, A615, Grade 60	7,800	LF		
17	Rebar - #3, Stirrups, 0.668# per FT, 940 pieces each 6ft = 5,640 LF @ 9-in OC, Grade 60	940	EA		
18	Rebar - #5, 1.043# per FT, 75 corner bar pieces at 10' each = 750 LF = 785 LB, A615, Grade 60	75	EA		
19	Concrete between sheet piling and concrete ramp (34ft long * 1.5ft deep * 2ft wide)	4	CY		
20	Concrete for steps, landing pad, and fill between sheetpile ( = 7'x4'x4' + 7'x4'x0.33' + 28'*3'*4')	17	CY		
21	Rebar for steps & fill between sheetpile - #5, A615, Grade 60	444	LF		
22	FDOT Aluminum Handrail	35	LF		
23	Sidewalk (includes 36 sf section to be repaired)	1,685	SF		
24	Post & Rope Fence	740	LF		
25	10ft x 10ft Covered Pavilion w/ Concrete Pad & Thickened Edges	1	LS		
26	Landscaping - 4,064 plants on planting plan (1 gallon ea)	4,064	EA		
27	Landscaping - remove and replace, protect and trim or relocate existing trees as indicated in January 16 Updated Staff Report.	1	LS		
28	Sod	16,750	SF		
29	Testing - Allowance for Concrete	1	LS		
30	Vibration Monitoring - during pile driving operations between Stations 0+00 - 0+53 and 6+50 - 6+92	1	LS		
31	Site Restoration (including sidewalk and other impacts)	1	LS		
32	<b>Bid Options</b>				
33	Steel Sheet Pile Meets ASTM A690 Specification for Corrosion Resistance in Marine Environments	702	LF		
34	Coal Tar Epoxy Coating: 16 Mils DFT after a Near White Sand Blast; Coated Full Length All Sides	22,649	SF		
35	Steel Sheet Pile Points (materials only)	337	EA		
36	Cutting & Installing Points to Sheet Pile	337	EA		
38					
39	<b>Direct Cost, Base Bid (Lines 6-31, Inclusive)</b>				<b>Direct Cost</b>
40					
41	<b>Contractor Cost</b>				
42	FOOH & HOOH (Overhead) Combined		LS		
43	Mobilization/ Demobilization		LS		
44	Bonds, Permits & Insurance		LS		
45	<b>Direct + Contractor Cost</b>				
46	<b>* Quantities provided for information only, Bidder responsible for verifying all values.</b>				
47	Prepared by: JWD, MRB				

# Approved Replacement Palm List

*Cocos nucifera*

## **Coconut Palm**

Tall, moderate growth with heavy crown, full sun, salt and drought tolerant

*Coccothrinax argentata*

## **Silver Palm**

Small, slow growing, fan leaf, drought tolerant

*Pseudophoenix sargentii*

## **Buccaneer Palm**

Medium, slow growing, feather leaf, salt and drought tolerant

*Roystonea regia*

## **Royal Palm**

Tall, moderate to fast growing, feather leaf, moderate salt and drought tolerant

*Sabal palmetto*

## **Cabbage Palm**

Medium to tall, slow growing, salt and drought tolerant

*Thrinax morrisii*

## **Keys Brittle Thatch Palm**

Medium, slow growing, moderate salt and drought tolerant

*Thrinax radiata*

## **Florida Thatch Palm**

Medium, slow to moderate growing, salt and drought tolerant

Replacement palms must be 4 ft tall (measured from the ground to top of frond). A palm who is 8 ft tall can count for 2 replacement palms.

Any questions, please contact (305) 809-3768.

# CITY OF KEY WEST DICOT TREE REPLACEMENT LIST

\*Highlighted in Blue are State Listed Endangered or Threatened trees and qualify for the 2 for 1 caliper inch replacement credit. This credit does not apply to emergency permits that require a one or two tree replacement.

## Canopy and Subcanopy Trees:

<i>Acacia choriophylla</i>	<b>Cinnecord/Tamarindillo</b>
<i>Acacia farnesiana</i>	Sweet or Pine Acacia
<i>Acacia macracantha</i>	Long-spine Acacia
<i>Amphitecna latifolia</i>	Black Calabash
<i>Amyris elemifera</i>	Torchwood
<i>Annona glabra</i>	Pond Apple
<i>Ardisia escallonioides</i>	Marlberry
<i>Ateramnus lucidus</i>	Crabwood
<i>Bourreria cassinifolia</i>	<b>Little Strongbark</b>
<i>Bourreria ovata</i>	Strongbark
<i>Bourreria radula</i>	<b>Rough Strongbark</b>
<i>Bumelia celastrina</i>	Saffron Plum
<i>Bumelia salicifolia</i>	Willow Bustic
<i>Bursera simaruba</i>	Gumbo Limbo
<i>Byrsoniama lucida</i>	<b>Locust berry</b>
<i>Calyptranthes pallens</i>	<b>Spicewood/Pale Lidflower</b>
<i>Calyptranthes zuzygium</i>	<b>Myrtle-of-the-river</b>
<i>Canella winterana</i>	<b>Wild Cinnamon</b>
<i>Capparis cynophallophora</i>	Jamaica Caper
<i>Capparis flexuosa</i>	Limber Caper
<i>Casasia clusiifolia</i>	Seven Year Apple
<i>Cassia chapmanii</i>	Bahama Senna
<i>Cassia keyensis</i>	<b>Key Cassia</b>
<i>Chiococca alba</i>	Common Snowberry
<i>Chiococca parvifolia</i>	Pineland Snowberry
<i>Chrysobalanus icaco</i>	Cocoplum
<i>Chrysophyllum oliviforme</i>	<b>Satin Leaf</b>
<i>Clusia rosea</i>	Pitch Apple
<i>Citharexylum fruticosum</i>	Fiddlewood
<i>Coccoloba diversifolia</i>	Pigeon Plum
<i>Colubrina arborescens and cubensis</i>	<b>Greenheart/Colubrina</b>
<i>Colubrina elliptica</i>	<b>Soldierwood</b>
<i>Conocarpus erectus</i>	Green Buttonwood
<i>Conocarpus erectus var. sericeus</i>	Silver Buttonwood
<i>Cordia sebestena</i>	Orange Geiger
<i>Crossopetalum rhacoma</i>	<b>Rhacoma</b>
<i>Cupania glabra</i>	<b>Cupania</b>
<i>Dodonaea viscosa</i>	Varnish Leaf
<i>Drypetes diversifolia</i>	<b>Milkbark</b>
<i>Drypetes lateriflora</i>	<b>Guiana Plum</b>
<i>Erithalis fruticosa</i>	<b>Black Torch</b>
<i>Eugenia axillaries</i>	White Stopper
<i>Eugenia confusa</i>	<b>Redberry Stopper</b>
<i>Eugenia foetida</i>	Spanish Stopper
<i>Eugenia rhombea</i>	<b>Red Stopper</b>

# CITY OF KEY WEST DICOT TREE REPLACEMENT LIST

\*Highlighted in Blue are State Listed Endangered or Threatened trees and qualify for the 2 for 1 caliper inch replacement credit. This credit does not apply to emergency permits that require a one or two tree replacement.

*Exostema caribaeum*  
*Exothea paniculata*  
*Ficus aurea*  
*Ficus citrifolia*  
*Forestiera segregata*  
*Guaiacum officinale*  
*Guaiacum sanctum*  
*Guapira discolor*  
*Guettarda elliptical*  
*Guettarda scabra*  
*Gyminda latifolia*  
*Hamelia patens*  
*Hypelate trifoliata*  
*Ilex cassine dahoon*  
*Jacquinia keyensis*  
*Krugiodendron ferreum*  
*Lysiloma latisiliquum*  
*Manilkara bahamensis*  
*Mastichodendron foetidissimum*  
*Myrica cerifera*  
*Myrcianthes fragrans/*  
*Eugenia simpsonii*  
*Myrsine floridana*  
*Nectandra coriacea*  
*Pimenta dioica*  
*Pimeta racemose*  
*Pinus elliottii var. densa*  
*Piscidia piscipula*  
*Pisonia rotundata*  
*Pithecellobium keyense*  
*Psidium longipes*  
*Randia aculeata*  
*Reynosia septentrionalis*  
*Sapindus saponari*  
*Savia bahamensis*  
*Schaefferia frutescens*  
*Schoepfia chrysophylloides*  
*Simarouba glauca*  
*Suriana maritima*  
*Swietenia mahagoni*  
*Trema lamarckianum*  
*Trema micranthum*  
*Ximenia americana*  
*Zanthoxylum fagara*  
*Zanthoxylum flavum*

Princewood  
Inkwood  
Strangler Fig  
Shortleaf Fig  
Florida Privet  
Cuban Lignum Vitae  
Lignum Vitae  
Blolly  
Velvetseed  
Rough Velvetseed  
West Indian False Boxwood  
Firebush  
Inkwood/White Ironwood  
Dahoon Holly  
Joewood  
Black Ironwood  
Wild Tamarind  
Wild Dilly  
Mastic Tree  
Wax myrtle  
  
Simpson's Stopper  
Myrsine  
Lancewood  
Allspice  
Bay Rum  
Dade County Slash Pine  
Jamaica Dogwood  
Devil's Smooth Claws  
Blackbead  
Long-stalked Stopper  
White Indigo berry/Randia  
Darling Plum  
Soapberry  
Bahama Maidenbush  
Florida Boxwood  
Graytwig  
Paradise Tree  
Baycedar  
Mahogany  
West Indies Trema  
Florida Trema  
Hog Plum  
Wild Lime  
Yellow-heart



# CITY OF KEY WEST DICOT TREE REPLACEMENT LIST

*\*Highlighted in Blue are State Listed Endangered or Threatened trees and qualify for the 2 for 1 caliper inch replacement credit. This credit does not apply to emergency permits that require a one or two tree replacement.*

## Heritage Canopy Trees:

<i>Delonix regia</i>	Royal Poinciana
<i>Manilkara zapota</i>	Sapodilla
<i>Melicoccus bijugatus</i>	Spanish Lime

## Fruit Trees:

<i>Annona muricata</i>	Soursop
<i>Annona squamosa</i>	Sugar Apple
<i>Averrhoa carambola</i>	Starfruit
<i>Citrus aurantifolius</i>	Key Lime
<i>Citrus sp.</i>	Sour Orange
<i>Mangifera indica</i>	Mango
<i>Persea americana</i>	Avocado
<i>Pouteria sapota</i>	Mamey Sapote
<i>Psidium guajava</i>	Guava
<i>Tamarindus indica</i>	Tamarind

**\*\* contact Urban Forestry Manager to discuss approval of additional fruit tree replacement plant species**

## Flowering Trees:

<i>Bulnesia arborea</i>	Verawood
<i>Cassia fistula</i>	Golden Shower tree
<i>Cassia javanica</i>	Apple Blossom tree
<i>Cassia bakeri and grandis</i>	Pink Shower tree
<i>Plumeria sp.</i>	Frangipani
<i>Tabebuia aurea</i>	Silver Trumpet Tree (yellow flowers)
<i>Tabebuia bahamensis</i>	Bahamian Trumpet Tree/Five Fingers

**NOTE: Replacement trees must be a minimum of 5 feet in height (measured from the ground to top of branch/trunk).**

# Updated STAFF REPORT

DATE: January 16, 2018

RE: **1300 Atlantic Boulevard (C.B. Harvey Rest Beach Park)**  
**(permit application # T17-8522)**

FROM: Karen DeMaria, City of Key West Urban Forestry Manager

**Tree #2B: Buttonwood (*Conocarpus erectus*)**



**Heavy trim this tree if needed.**



**TREE #4: Thatch Palm (Thrinax sp.)**



**Transplant tree  
if needed.**

**Tree #34B: Cabbage Palm (Sabal palmetto)**



**Heart of this  
palm is still  
alive—new  
growth is green.  
Transplant tree.**



**Tree #34: Coconut Palm (*Cocos nucifera*)**



**Transplant  
tree.**

**Tree #48A: Blackbead (*Pithecellobium keyense*)**







Tree was initially supposed to be transplanted. Appears to have some significant hurricane damage. Needs to be re-evaluated. If removed (emergency approval), 1-8ft tall tree minimum 1" diameter from approved list will have to be planted as a replacement.

**Tree #48: Baycedar (*Suriana maritima*)**



**Tree approved for removal. If removed, 6.2 caliper inches of approved replacement trees are required.**



**Tree #58: Thatch Palm (Thrinax sp.)**



**Transplant.**

**Tree #61, 62A & B, and 63: Thatch Palm (Thrinax sp.)**



**All of these palms to be transplanted.**



### **Tree #66: Seven Year Apple (*Casasia clusiifolia*)**



**Tree originally approved for removal with required replacements. Large portion of tree removed in hurricane. Tree is now a shrub-no permit required for removal and no replacements required.**

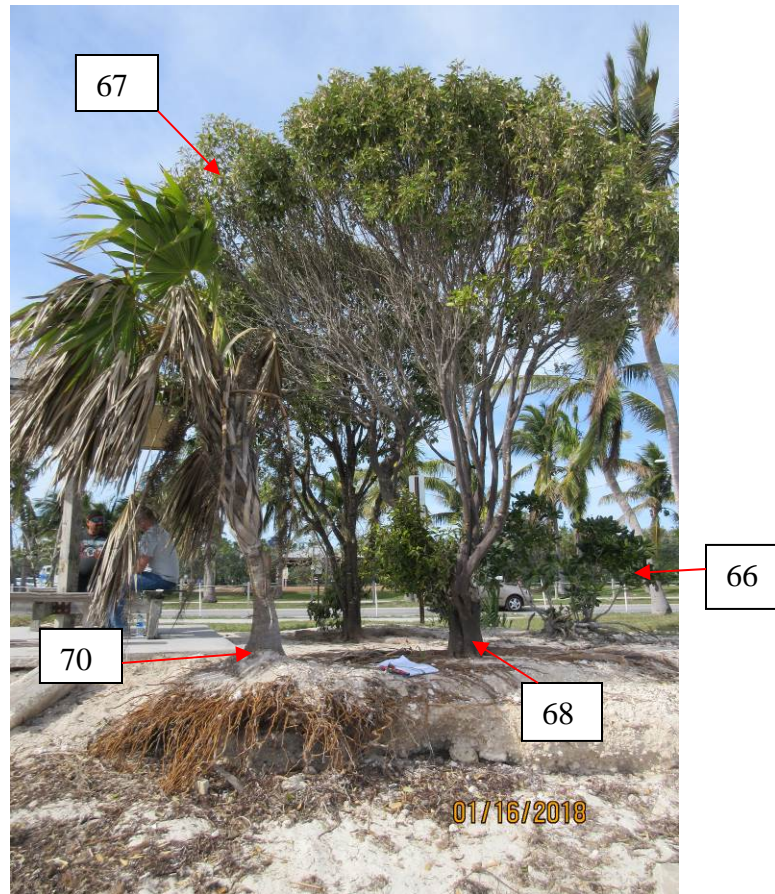
### **Tree #67: Jamaican Caper (*Capparis cynophallophora*)**



**Tree approved for removal. If removed, required replacements are 11.3 caliper inches of approved trees.**



## Tree #68: Jamaican Caper (*Capparis cynophallophora*)



**Tree approved for removal. If removed, 13.4 caliper inches of approved replacement trees required.**

## Tree #70: Thatch Palm (*Thrinax* sp.)



**Tree originally approved for transplanting. Palm is dying-the heart appears to be dead. If confirmed as dead, no replacements required for removal.**





**Tree #86: Thatch Palm (*Thrinax* sp.)**



**Palm to be transplanted.**

## **Tree #106:**



**Tree to be trimmed, if needed.**

### **FINAL SYNOPSIS: Approved Actions.**

**Trim Only:** Trees 2B and 106 (both trees have had some trimming already done).

**Tree Removal:** Trees 48, 48A, 66, 67, and 68. Requires a total of 30.9 caliper inches of approved tree replacement plus 1-8ft tall tree, minimum 1" diameter.

**Palm Removal:** Tree 70. Required replacement of 1-4ft tall palm tree from approved list.

**Palm Transplants:** Trees 4, 34, 34B, 58, 61, 62A-B, 63, and 86.

**No permits will be issued for the project until a specific tree removal/transplantation/maintenance trimming plan has been submitted to the Urban Forester.**

**Any transplants or trimming work to the trees must be done by professionals in that field.**



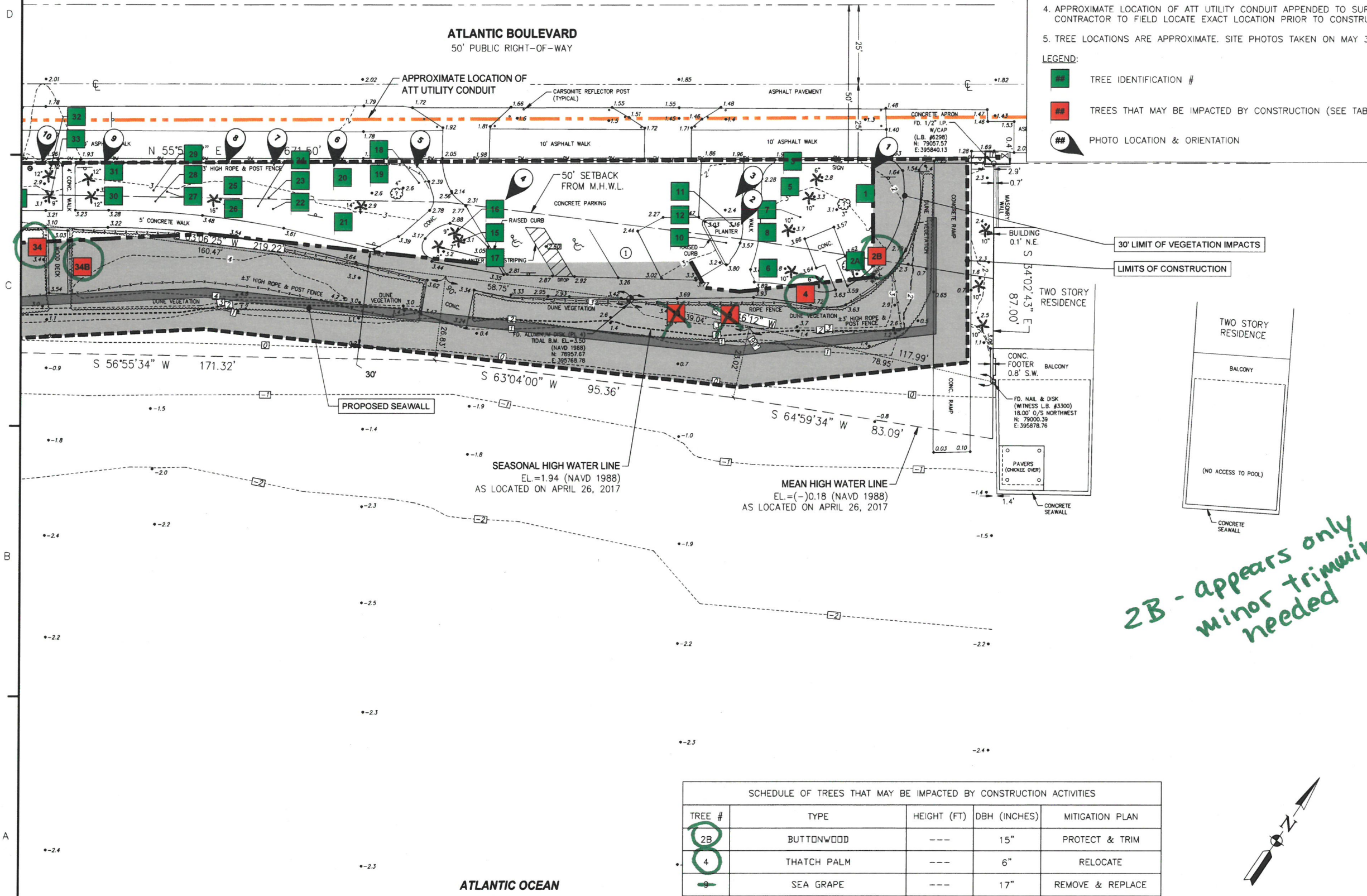
1-16-18 KD

- NOTES:
1. SITE SURVEY PERFORMED BY AVIROM & ASSOCIATES INC. ON APRIL 26, 2017.
  2. ALL ELEVATIONS ARE REFERENCED TO NAVD88. NGVD29 = 1.35' + NAVD88.
  3. HORIZONTAL COORDINATES, WHERE DEPICTED, ARE REFERENCED TO NAD83, FLORIDA STATE PLANE, EAST ZONE.
  4. APPROXIMATE LOCATION OF ATT UTILITY CONDUIT APPENDED TO SURVEY. CONTRACTOR TO FIELD LOCATE EXACT LOCATION PRIOR TO CONSTRUCTION.
  5. TREE LOCATIONS ARE APPROXIMATE. SITE PHOTOS TAKEN ON MAY 31, 2017.

- LEGEND:
- TREE IDENTIFICATION #
  - TREES THAT MAY BE IMPACTED BY CONSTRUCTION (SEE TABLE)
  - PHOTO LOCATION & ORIENTATION

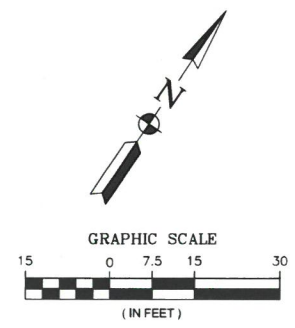


MICHAEL R. BARNETT, PE  
FL LIC. # 44625



2B - appears only minor trimming needed

SCHEDULE OF TREES THAT MAY BE IMPACTED BY CONSTRUCTION ACTIVITIES				
TREE #	TYPE	HEIGHT (FT)	DBH (INCHES)	MITIGATION PLAN
2B	BUTTONWOOD	---	15"	PROTECT & TRIM
4	THATCH PALM	---	6"	RELOCATE
9	SEA GRAPE	---	17"	REMOVE & REPLACE
13	SEA GRAPE	---	13"	REMOVE & REPLACE
34	COCONUT PALM	20	---	RELOCATE
34B	SABAL PALM	4	---	RELOCATE



FOR BID PURPOSES ONLY - NOT FOR CONSTRUCTION

TETRA TECH INC.  
750 SOUTH FEDERAL HWY  
SUITE 314  
STUART, FL 34994-2936  
TEL: (772) 781-3400  
FAX: (772) 781-3411

CITY OF KEY WEST  
REST BEACH SEAWALL  
EXISTING TREES (2 of 2)

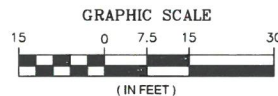
CERTIFICATE OF AUTHORIZATION  
NO. 2425

KEY WEST, MONROE COUNTY, FL

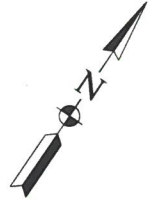
Sheet Reference:  
**C-105**  
Sheet 7 of 23

Trees already reviewed by Tree Commission circled in green.





1-16-18 KD

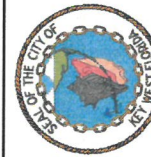


NOTES:

1. SITE SURVEY PERFORMED BY AVIROM & ASSOCIATES INC. ON APRIL 26, 2017.
2. ALL ELEVATIONS ARE REFERENCED TO NAVD88. NGVD29 = 1.35' + NAVD88.
3. HORIZONTAL COORDINATES, WHERE DEPICTED, ARE REFERENCED TO NAD83, FLORIDA STATE PLANE, EAST ZONE.
4. APPROXIMATE LOCATION OF ATT UTILITY CONDUIT APPENDED TO SURVEY. CONTRACTOR TO FIELD LOCATE EXACT LOCATION PRIOR TO CONSTRUCTION.
5. TREE LOCATIONS ARE APPROXIMATE. SITE PHOTOS TAKEN ON MAY 31, 2017.

LEGEND:

- 98 TREE IDENTIFICATION #
- ## PHOTO LOCATION & ORIENTATION
- LIMIT OF VEGETATION IMPACTS
- LIMITS OF CONSTRUCTION
- TREES THAT MAY BE IMPACTED BY CONSTRUCTION (SEE TABLE)



MICHAEL R. BARNETT, PE  
FL LIC. # 44625

Design	Drawn	Checked	Design	Scale	Appr.
M. BARNETT	J. DAVIS	R. CZAJANSKI	M. BARNETT	AS SHOWN	

TETRA TECH INC.  
7569 SOUTH FEDERAL HWY  
SUITE 314  
STUART, FL 34994-2936  
TEL: (772) 781-3411  
FAX: (772) 781-3411



CITY OF KEY WEST  
REST BEACH SEAWALL  
EXISTING TREES (1 of 2)  
KEY WEST, MONROE COUNTY, FL

Sheet Reference:  
**C-104**  
Sheet 6 of 23

FOR BID PURPOSES ONLY - NOT FOR CONSTRUCTION

Trees already reviewed by  
Tree Commission circled in green.

Tree 106  
has already  
had some  
trimming.

56 + 82 not  
included in review

DYING

ATLANTIC BOULEVARD  
50' PUBLIC RIGHT-OF-WAY

APPROXIMATE LOCATION  
ATT UTILITY COND

WHITE STREET  
R/W OF  
WHITE STREET

SOUTHEASTERLY  
EXTENSION OF  
WHITE STREET R/W

30' LIMIT OF VEGETATION IMPACTS

LIMITS OF CONSTRUCTION

WHITE STREET PIER

MEAN HIGH WATER LINE  
EL. = (-)0.18 (NAVD 1988)  
AS LOCATED ON APRIL 26, 2017  
AT WETFACE OF SEAWALL

SEASONAL HIGH WATER LINE  
EL. = 1.94 (NAVD 1988)  
AS LOCATED ON APRIL 26, 2017

SCHEDULE OF TREES THAT MAY BE IMPACTED BY CONSTRUCTION ACTIVITIES (CONT'D)

TREE #	TYPE	HEIGHT (FT)	DBH (INCHES)	MITIGATION PLAN
81	THATCH PALM	6	---	RELOCATE
86	THATCH PALM	6	---	RELOCATE
88	5 THATCH PALMS/1 SEA GRAPE	6	---	RELOCATE
96	COCONUT PALM	20	---	RELOCATE
100	BUTTONWOOD	---	45"	REMOVE & REPLACE
104	COCONUT PALM	20	---	RELOCATE
105	COCONUT PALM	20	---	RELOCATE
106	BUTTONWOOD	---	23"	PROTECT & TRIM

SCHEDULE OF TREES THAT MAY BE IMPACTED BY CONSTRUCTION ACTIVITIES

TREE #	TYPE	HEIGHT (FT)	DBH (INCHES)	MITIGATION PLAN
36	COCONUT PALM	20	---	RELOCATE
40	BUTTONWOOD	---	20"	REMOVE & REPLACE
48	BAY CEDAR	---	8"	REMOVE & REPLACE
48A	BLACKBEAD	---	16"	TRANSPLANT
58	THATCH PALM	6	---	RELOCATE
61	THATCH PALM	6	---	RELOCATE
62A/B	2 THATCH PALMS	6	---	RELOCATE
63	THATCH PALM	6	---	RELOCATE
66	SEVEN YEAR APPLE	---	9"	REMOVE & REPLACE
67	JAMAICAN CAPER	---	21"	REMOVE & REPLACE
68	JAMAICAN CAPER	---	16"	REMOVE & REPLACE
70	THATCH PALM	6	---	RELOCATE
72	THATCH PALM	4	---	RELOCATE
84A/B	THATCH PALM	6	---	RELOCATE
82	THATCH PALM	6	---	RELOCATE
83	THATCH PALM	6	---	RELOCATE