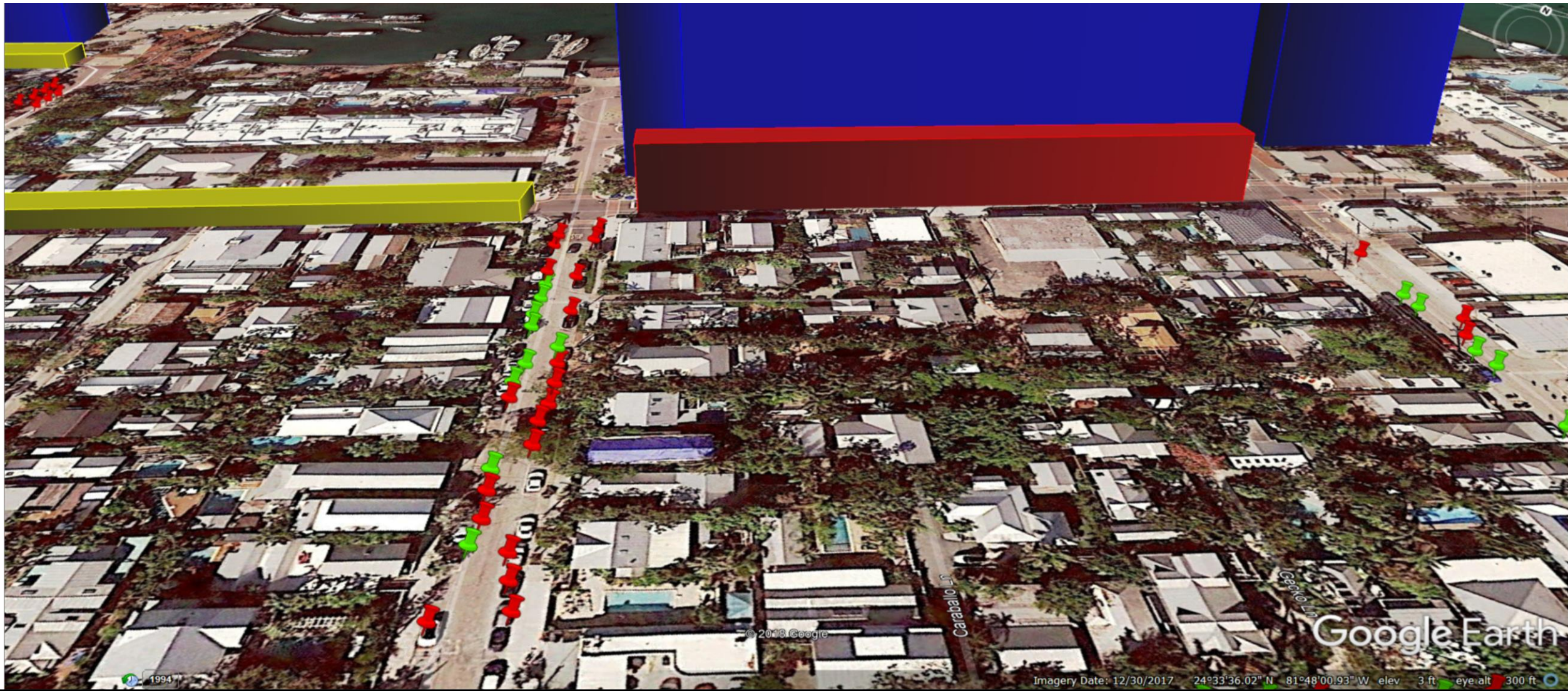


Residential Parking Reform

Residential Parking Space Criteria by Block

- Any block in the residential zone have 50 percent residential spaces
- Blocks adjacent to paid parking have at least 75 percent residential spaces
- Blocks with parking on only one side of the street have at least 75 percent residential spaces.

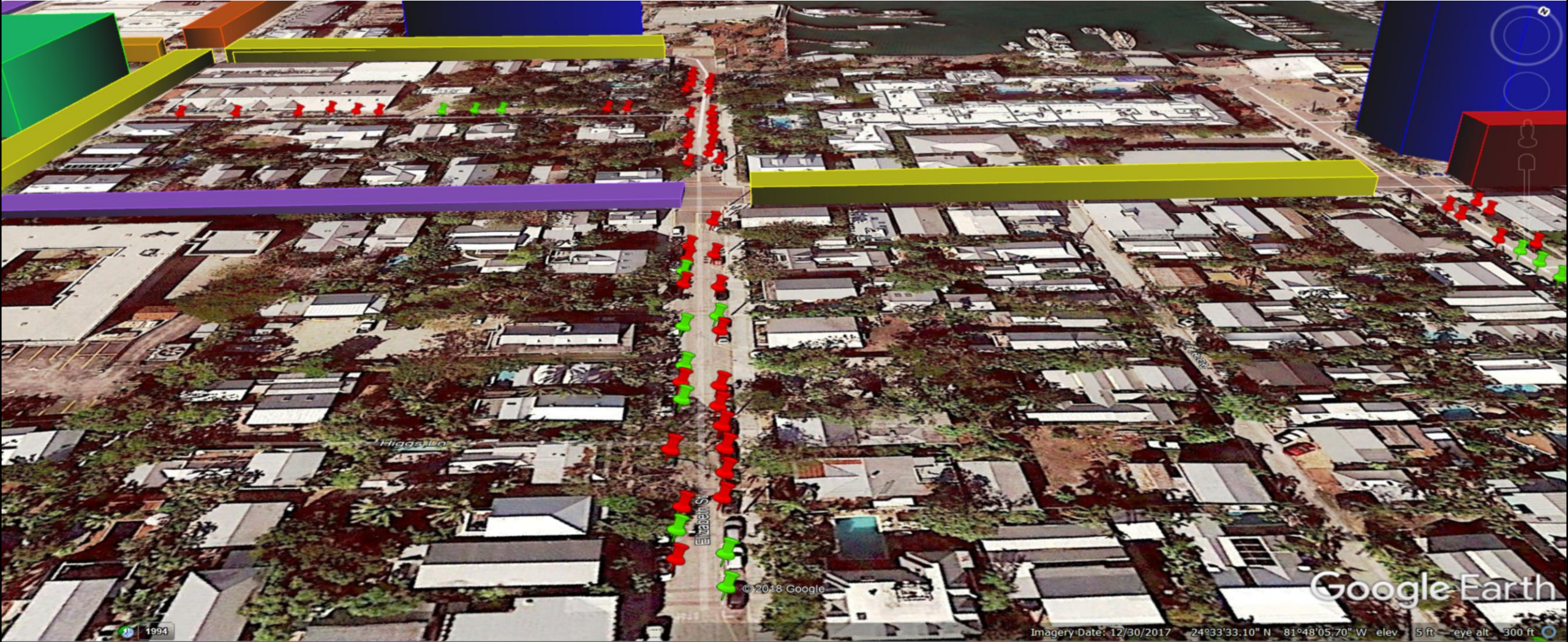
300 William Street



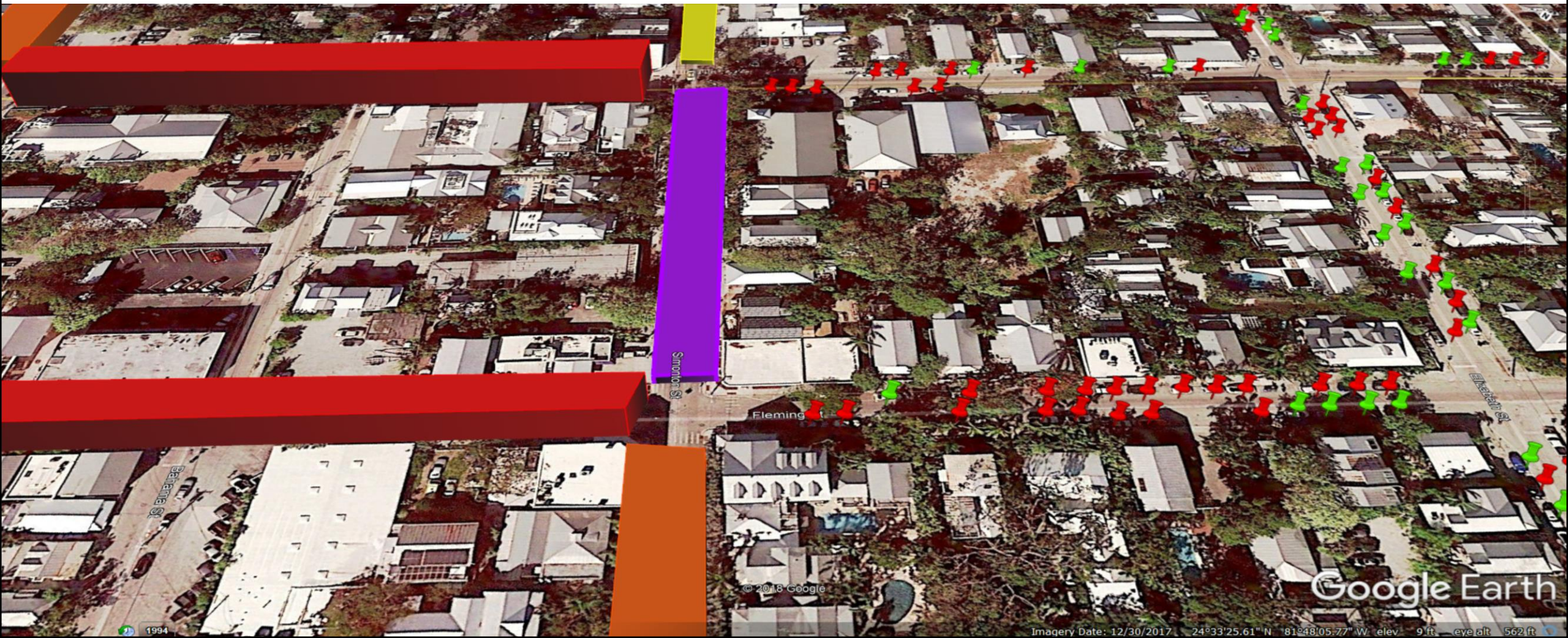
900 James Street



300 Elizabeth Street



600 Fleming Street



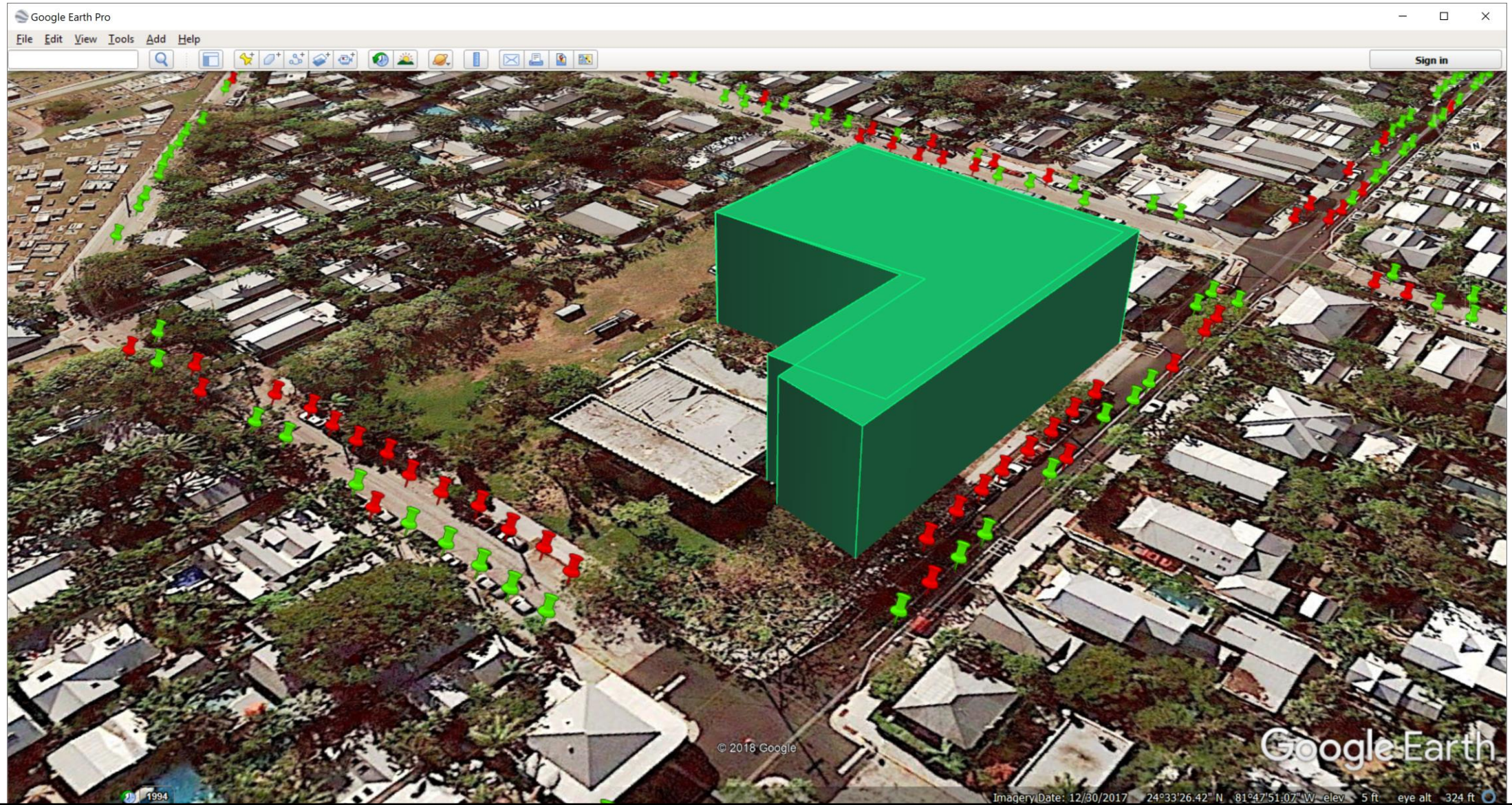
600 Southard Street



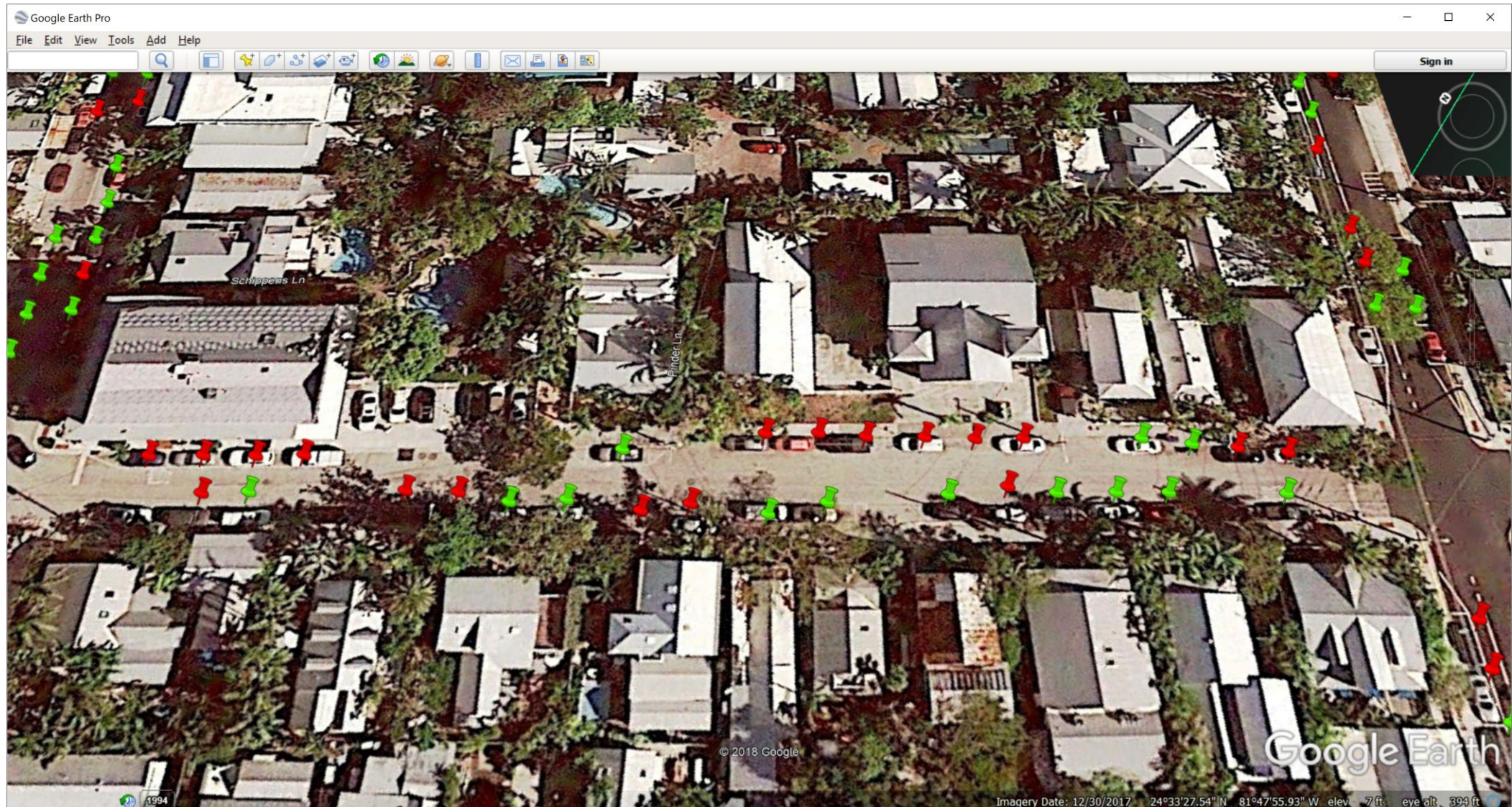
400 Frances Street



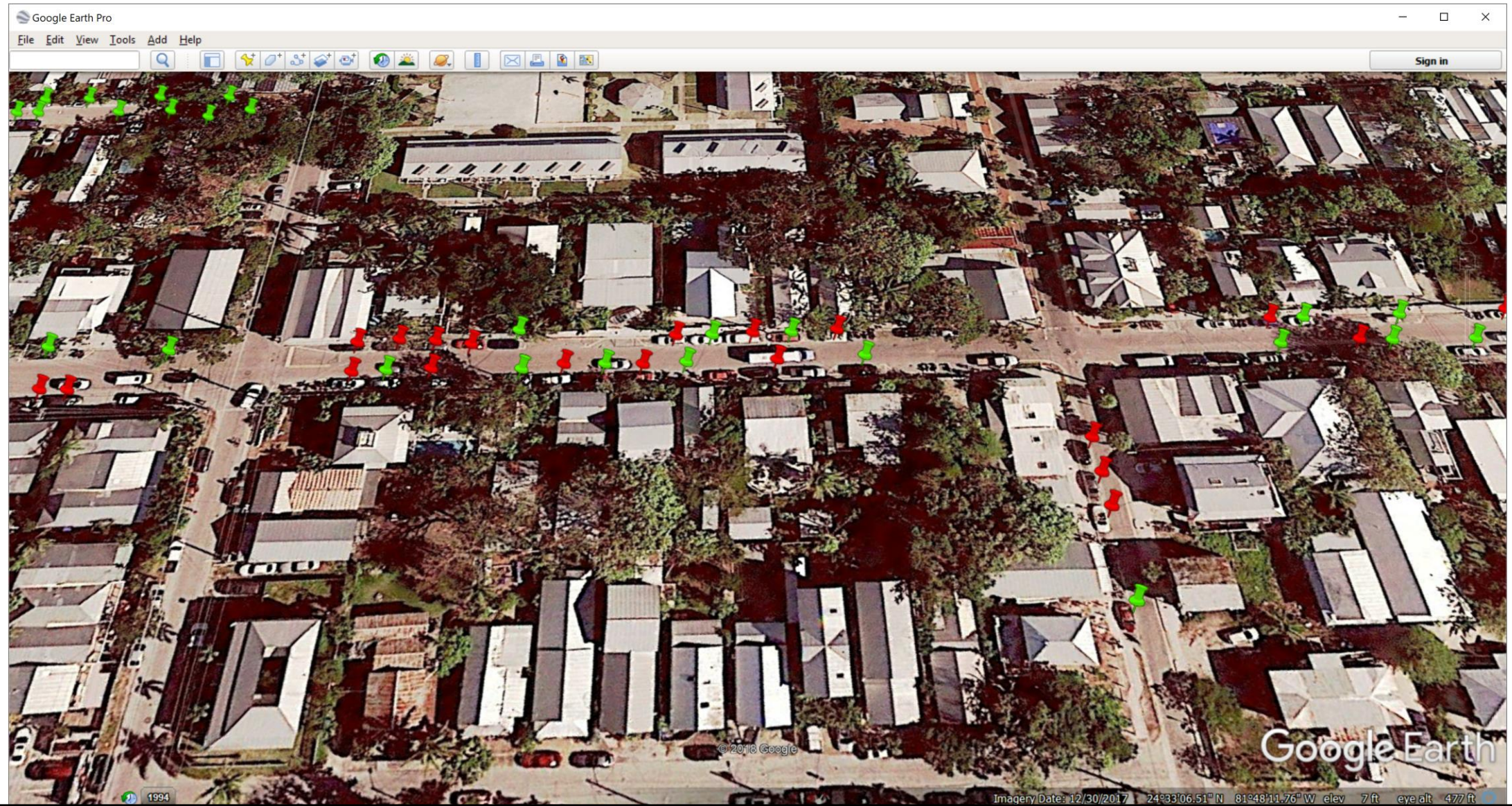
Harris School – Southard and William



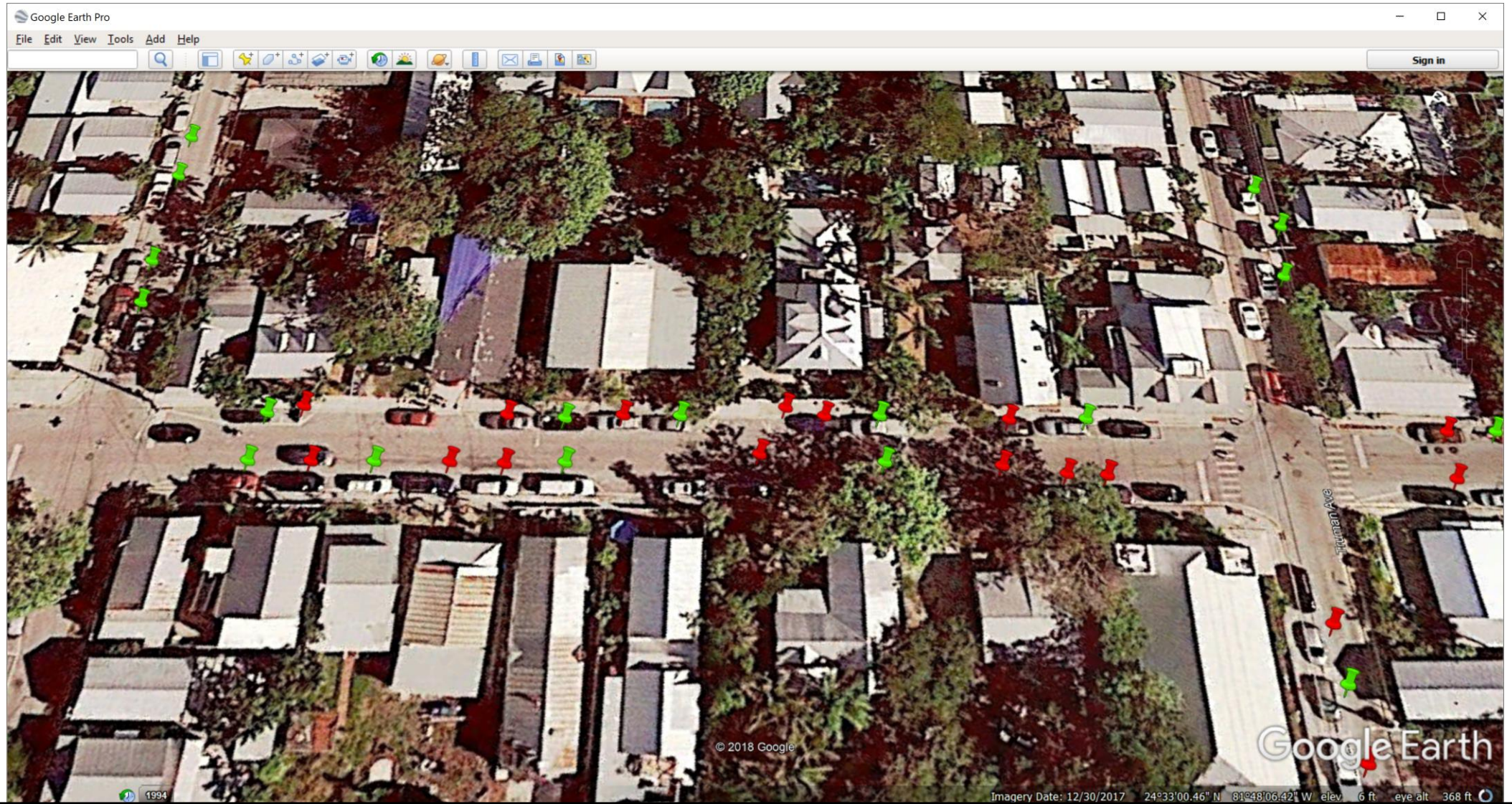
500 William



700 Thomas



900 Thomas



700 and 800 White



800 and 900 Simonton



Residential Parking Space Criteria by Block

- Any block in the residential zone have 50 percent residential spaces
- Blocks adjacent to paid parking have at least 75 percent residential spaces
- Blocks with parking on only one side of the street have at least 75 percent residential spaces.