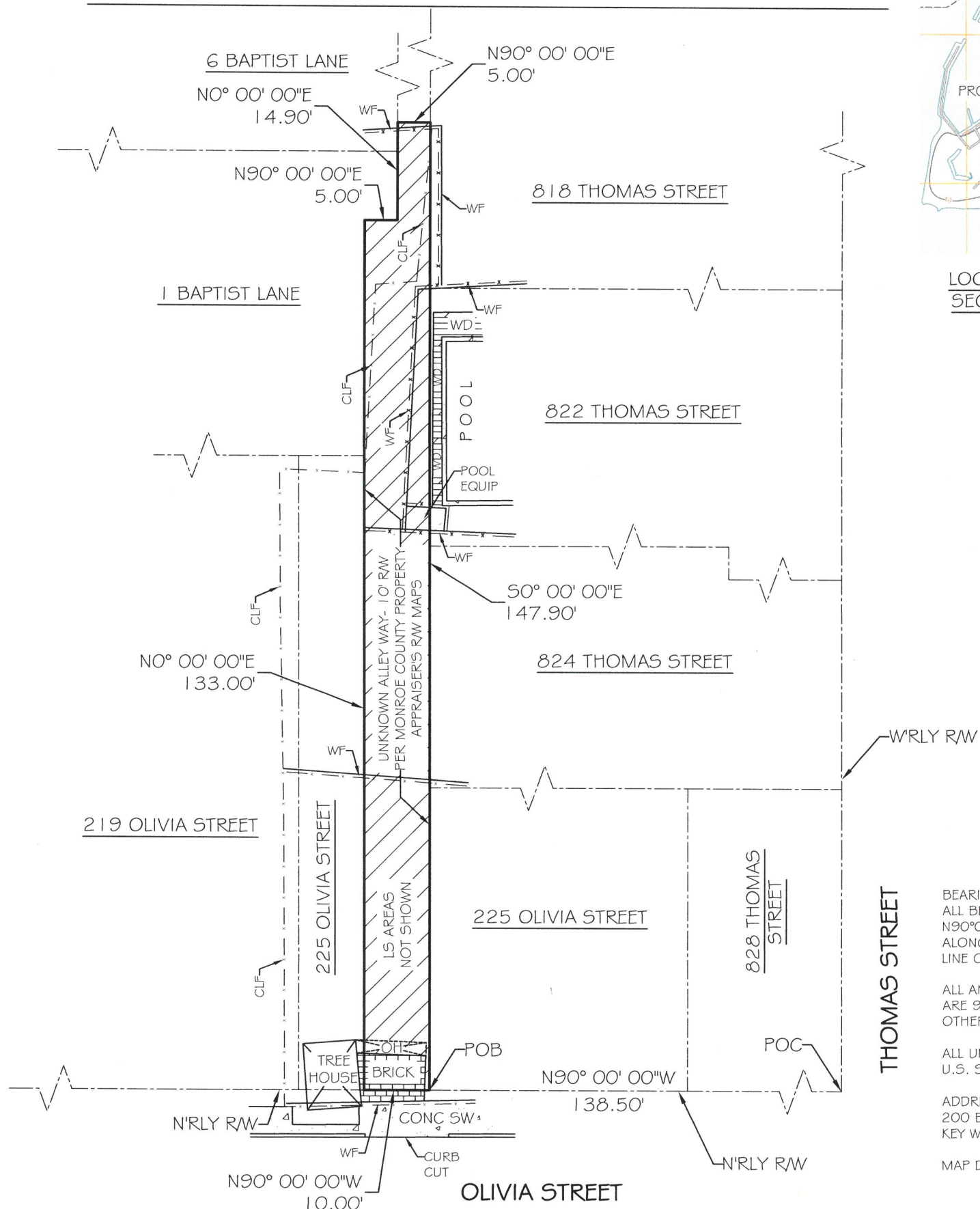
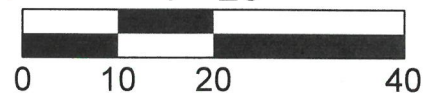




ASSUMED


$$1'' = 20'$$


BFP = BACK-FLOW PREVENTER	GUY = GUY WIRE	POC = POINT OF COMMENCEMENT
BO = BLOW OUT	HB = HOSE BIB	PRC = POINT OF REVERSE CURVE
C & G = 2' CONCRETE CURB & GUTTER	IP = IRON PIPE	PRM = PERMANENT REFERENCE MONUMENT
CB = CONCRETE BLOCK	IR = IRON ROD	PT = POINT OF TANGENT
CBW = CONCRETE BLOCK WALL	LS = ARC LENGTH	RT = RADIUS
CL = CENTERLINE	LS = LANDSCAPING	RAW = RIGHT OF WAY LINE
CLF = CHAINLINK FENCE	MB = MAILBOX	SSCO = SANITARY SEWER CLEAN-OUT
CM = CONCRETE MONUMENT	MEAS = MEASURED	SW = SIDE WALK
CONC = CONCRETE	MF = METAL FENCE	TBM = TEMPORARY BENCHMARK
CPP = CONCRETE POWER POLE	MHWL = MEAN HIGH WATER LINE	TOB = TOP OF BANK
CVRD = COVERED	NGVD = NATIONAL GEODETIC VERTICAL DATUM (1929)	TOS = TOE OF SLOPE
DELTA = CENTRAL ANGLE	NTS = NOT TO SCALE	TS = TRAFFIC SIGN
DEASE = DRAINAGE EASEMENT	OH = ROOF OVERHANG	TYP = TYPICAL
EL = ELEVATION	OHW = OVERHEAD WIRES	U/R = UNREADABLE
ENCL = ENCLOSURE	PC = POINT OF CURVE	U/E = UTILITY EASEMENT
EP = EDGE OF PAVEMENT	PM = PARKING METER	WD = WOOD DECK
FF = FINISHED FLOOR ELEVATION	PCC = POINT OF COMPOUND CURVE	WF = WOOD FENCE
FH = FIRE HYDRANT	PCP = PERMANENT CONTROL POINT	WL = WOOD LANDING
FI = FENCE INSIDE	PK = PARKER KALON NAIL	WM = WATER METER
FND = FOUND	POB = POINT OF BEGINNING	WPP = WOOD POWER POLE
FO = FENCE OUTSIDE	PI = POINT OF INTERSECTION	WRACK LINE = LINE OF DEBRIS ON SHORE
FOL = FENCE ON LINE		

NOTE: LEGAL DESCRIPTIONS HAVE BEEN FURNISHED BY THE CLIENT OR HIS/HER REPRESENTATIVE. PUBLIC RECORDS HAVE NOT BEEN RESEARCHED BY THE SURVEYOR TO DETERMINE THE ACCURACY OF THESE DESCRIPTIONS NOR HAVE ADJOINING PROPERTIES BEEN RESEARCHED TO DETERMINE OVERLAPS OR HIATUS. ADDITIONS OR DELETIONS TO SURVEY MAP OR REPORT BY OTHER THAN THE SIGNING PARTY IS PROHIBITED WITHOUT WRITTEN CONSENT OF THE SIGNING PARTY. THE BOLD LINE SHOWN HEREON REPRESENTS THE SURVEYOR'S OPINION OF THE DEED LINES. THE MEAN HIGH WATER LINE WAS NOT DETERMINED FOR THIS SURVEY. THE APPARENT MEAN HIGH WATER LINE IS SHOWN FOR REFERENCE ONLY.

ERIC A. ISAACS, PSM #6783, PROFESSIONAL SURVEYOR AND MAPPER, LB# 7847

NOT VALID WITHOUT THE
SIGNATURE AND THE RAISED
SEAL OF A FLORIDA
SURVEYOR AND MAPPER



19960 OVERSEAS HIGHWAY
SUGARLOAF KEY, FL 33042
PHONE: (305) 394-3690
FAX: (305) 509-7373
EMAIL: FKLSemail@Gmail.com

Map of Whitehead Spit showing the project site location. The map includes a grid of streets, with 'PROJECT SITE' labeled and an arrow pointing to a specific location. Other labels include 'PO', '12th St', '5th St', and 'Whitehead Spit'.

A compass rose with four main points labeled N (North), S (South), E (East), and W (West). The rose is centered on a black dot with four lines extending to the cardinal directions. The word "ASSUMED" is written in a serif font below the compass rose.

19960 OVERSEAS HIGHWAY
SUGARLOAF KEY, FL 33042
PHONE: (305) 394-3690
FAX: (305) 509-7373
EMAIL: FKL5email@Gmail.com