

Tree Species: Gumbo Limbo (*Bursera simaruba*)
Tree #80 and #81









Tree #80 Diameter: 10.6"

Location: 80%

Species: 100% (on protected tree list)

Condition: 50% (overall condition is fair to poor, poor canopy branch structure)

Total Average Value = 76%

Value x Diameter = 8 replacement caliper inches

Tree #81 Diameter: 3.3"

Location: 60% (growing close to larger tree)

Species: 100% (on protected tree list)

Condition: 40% (overall condition is poor, limited canopy growth)

Total Average Value = 66%

Value x Diameter = 2.1 replacement caliper inches

Tree #86





Tree #86



Tree #86

12/02/2020



Tree #86 Diameter: 9.5"

Location: 60% (growing with other canopy trees, growth impacted by other canopies, appears canopy also has bud mites).

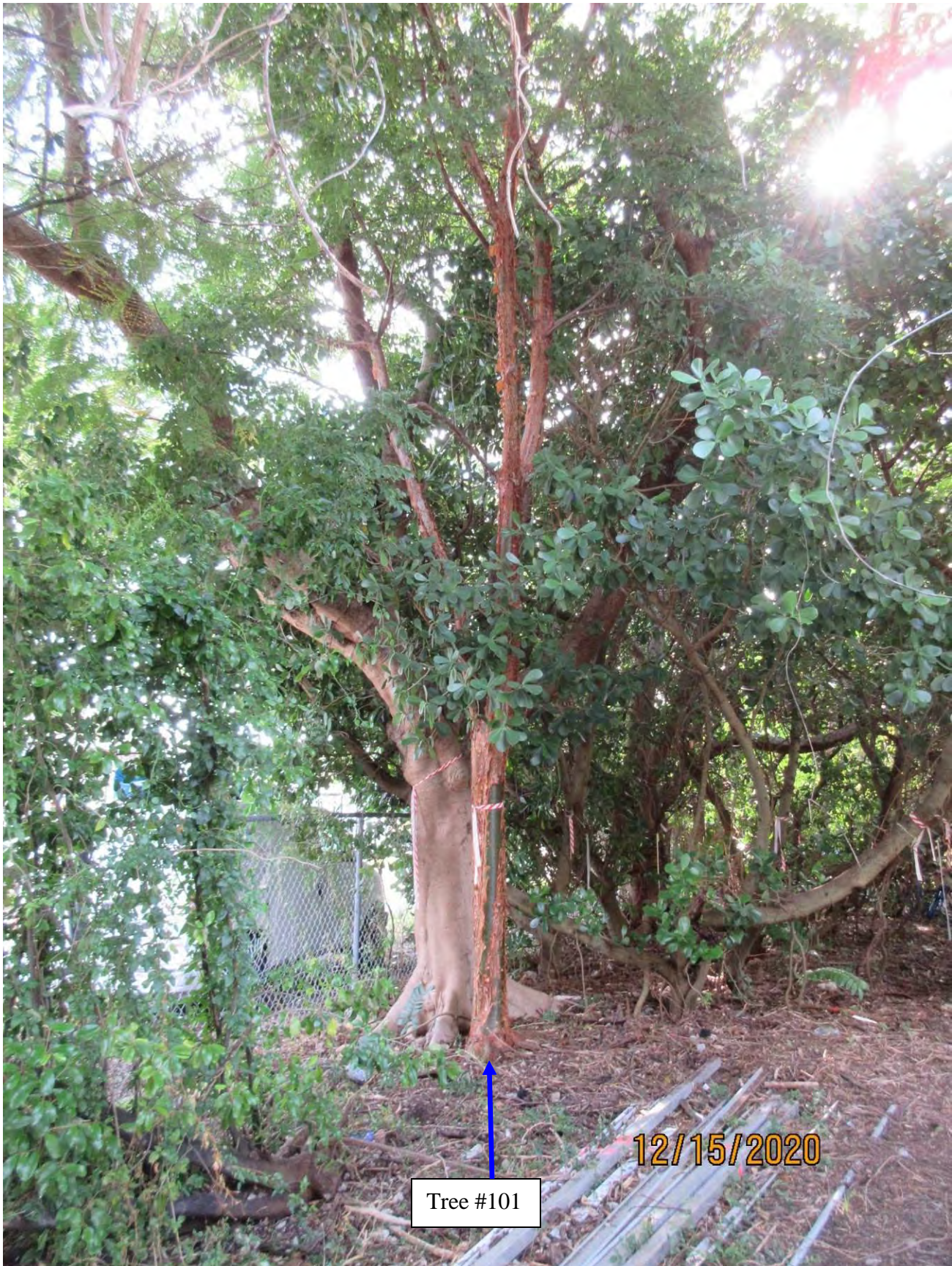
Species: 100% (on protected tree list)

Condition: 40% (overall condition is fair to poor, trunk has growth lean and canopy has a pest issue)

Total Average Value = 66%

Value x Diameter = 6.2 replacement caliper inches

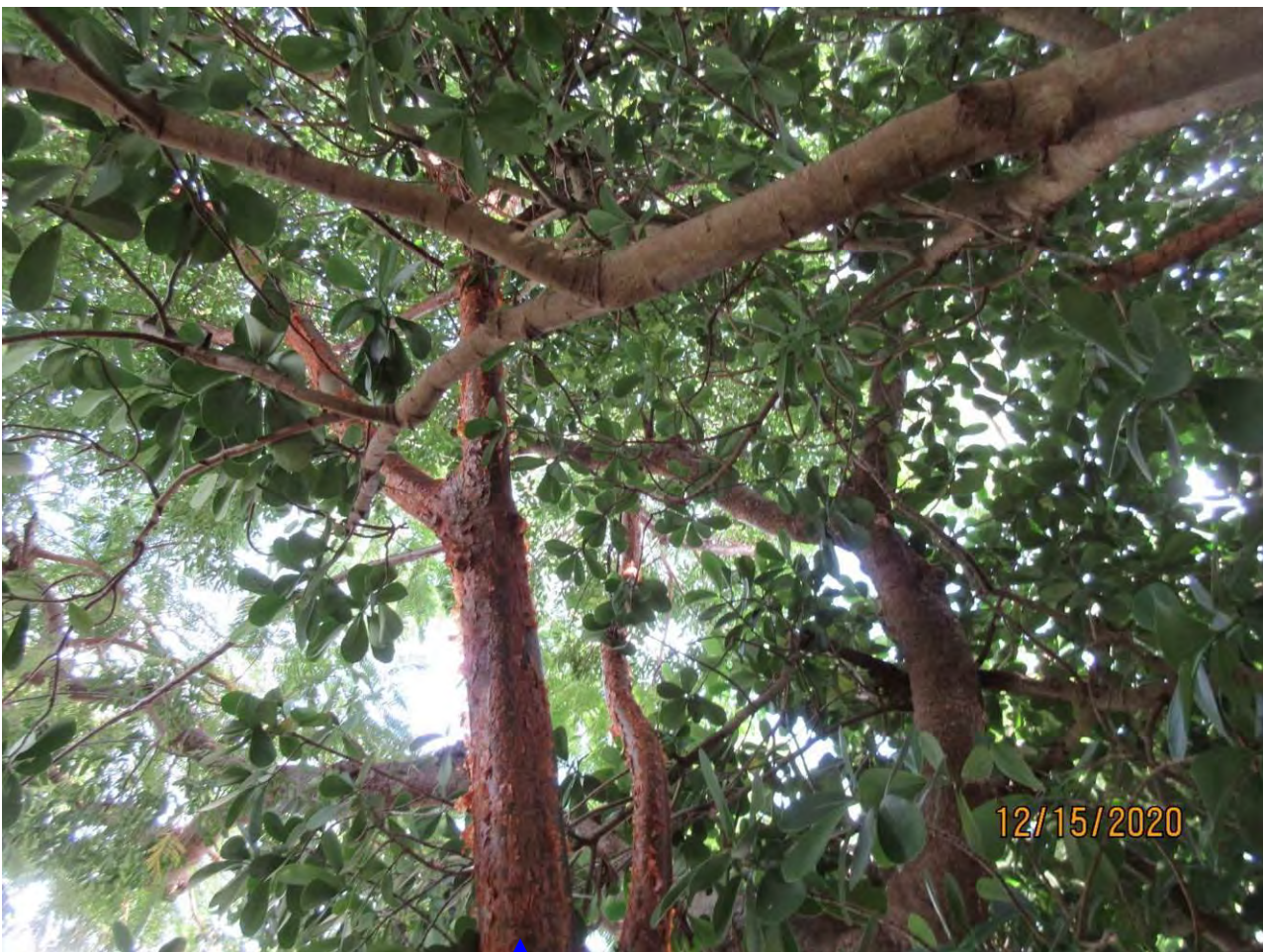
Tree #101



Tree #101



12/15/2020



Tree #101

Tree #101

06/24/2020





Diameter: 8.5"

Location: 60% (growing at base of Royal Poinciana tree)

Species: 100% (on protected tree list)

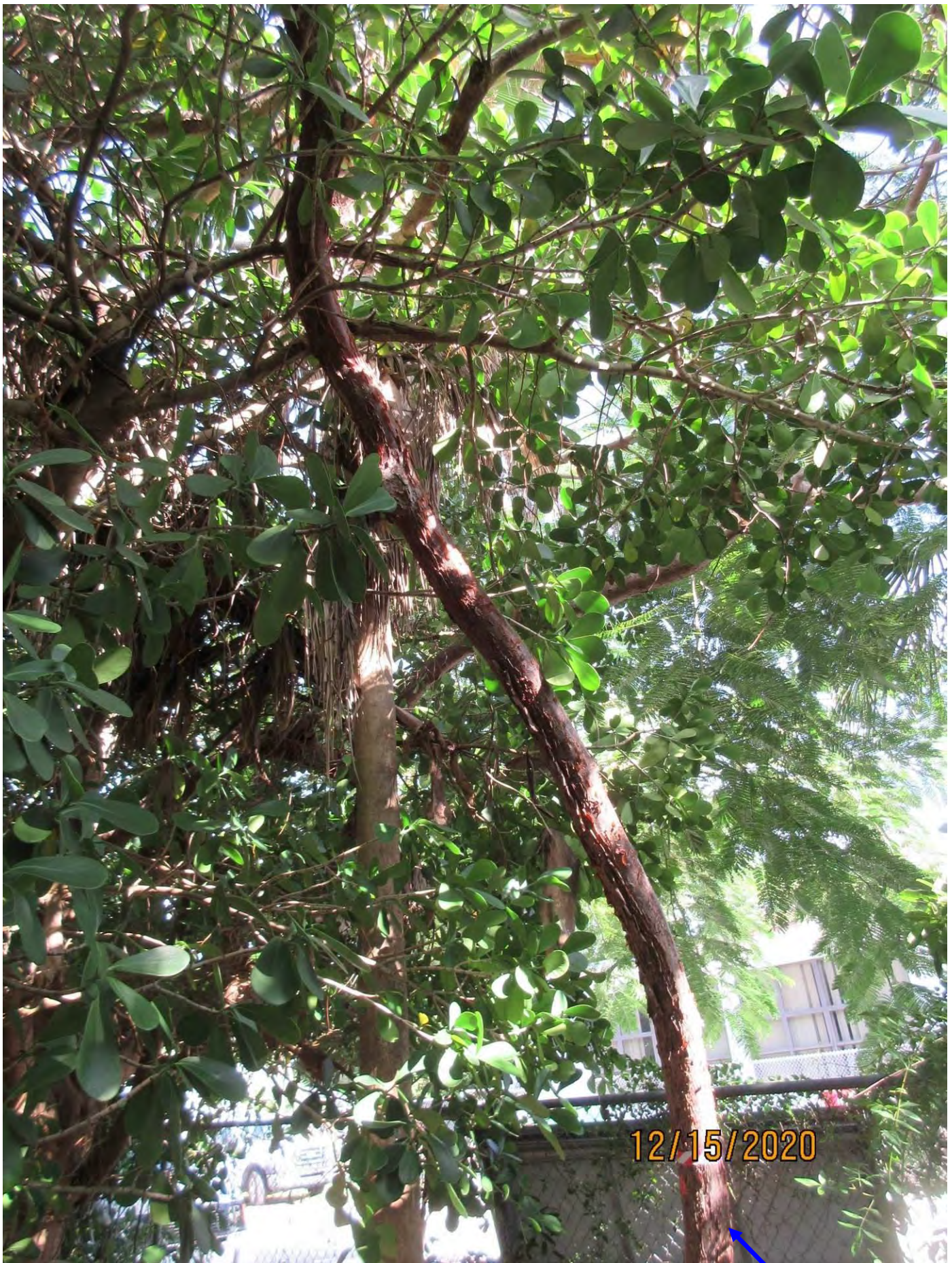
Condition: 60% (overall condition is fair)

Total Average Value = 73%

Value x Diameter = 6.2 replacement caliper inches

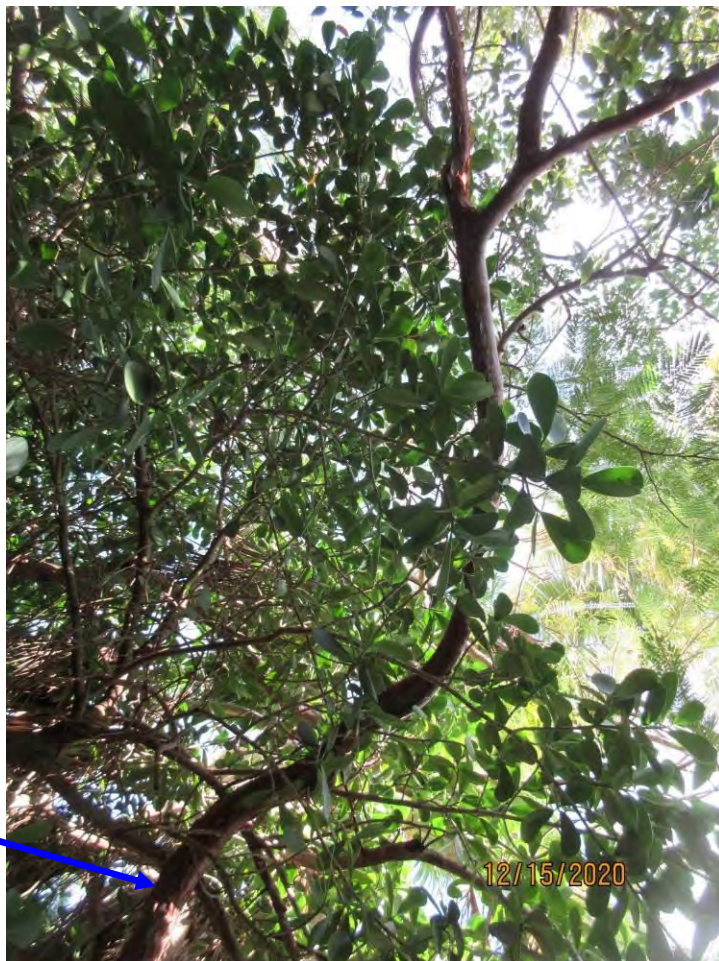
Tree #112





12/15/2020

Tree #112



Tree #112 Diameter: 4.7"

Location: 60% (canopy growth impacted by other adjacent trees)

Species: 100% (on protected tree list)

Condition: 40% (overall condition is poor, trunk has growth lean and canopy not properly developed-branch growth sprawling to one side)

Total Average Value = 66%

Value x Diameter = 3.1
replacement caliper inches



Tree #124



Tree #124 Diameter: 1.3"
Location: 80%
Species: 100% (on protected tree list)
Condition: 40% (poor, trunk impacted and constricted by vines, reduced canopy)
Total Average Value = 73%
Value x Diameter = 0.9
replacement caliper inches

Tree #163

Tree #161





Tree #161





Tree #161 Diameter: 6.5"

Location: 60% (growing at base and in root area of larger tree)

Species: 100% (on protected tree list)

Condition: 50% (fair to poor, canopy with growth lean away from larger tree, overall structure poor)

Total Average Value = 70%

Value x Diameter = 4.5 replacement caliper inches

Tree #175.



Tree #175 Diameter: 6.4"

Location: 60% (growth impacted by canopies of adjacent trees)

Species: 100% (on protected tree list)

Condition: 60% (overall condition is fair, tree has a growth lean with codominant branch trunks)

Total Average Value = 73%

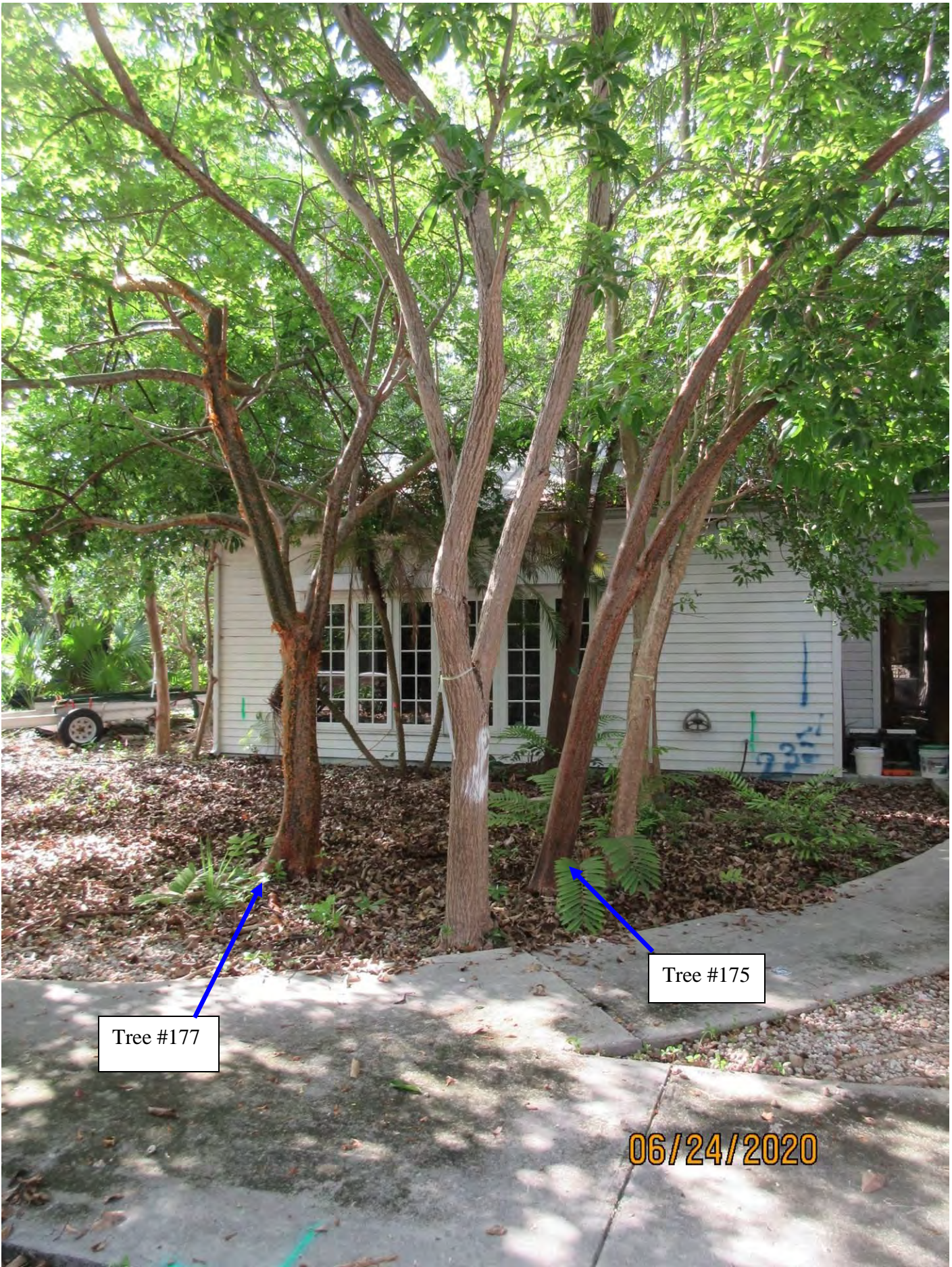
Value x Diameter = 4.6 replacement caliper inches



Tree #177

Tree #175

Pink Tabebuia
Tree #176
(NPR)



Tree #177

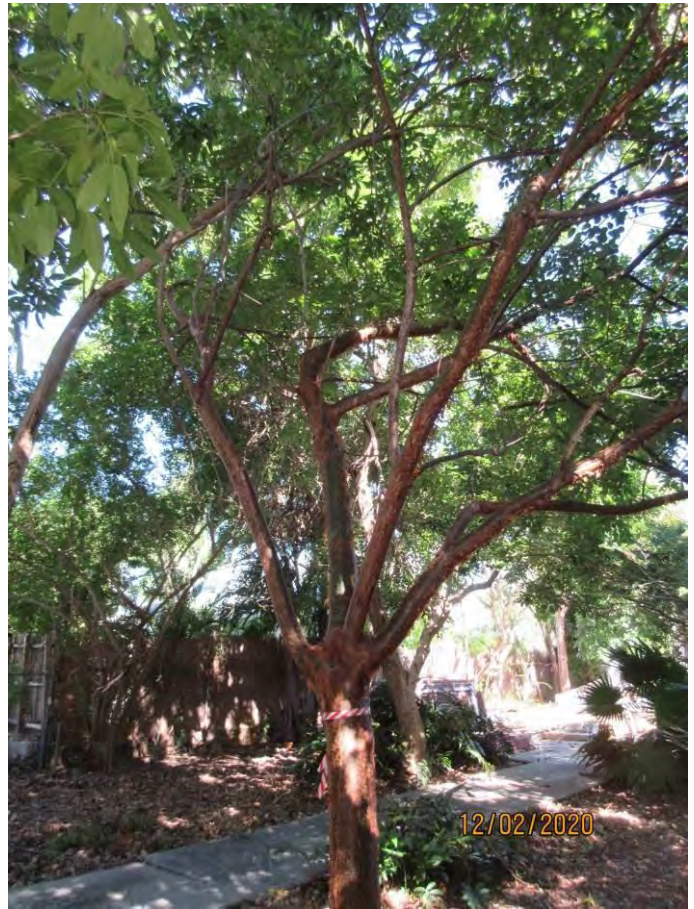
Tree #175

06/24/2020

Tree #177



Tree #177



Tree #177 Diameter: 8.5"

Location: 70% (canopy growth impacted by adjacent tree canopies)

Species: 100% (on protected tree list)

Condition: 60% (overall condition is fair)

Total Average Value = 76%

Value x Diameter = 6.4 replacement caliper inches

Tree Species: Jamaican Caper (*Capparia cynophallophora*)

Tree #90

