



THE CITY OF KEY WEST
Tree Commission

Post Office Box 1409 - Key West, FL 33041-1409
Telephone: 305-809-3725

March 10, 2020

City of Key West
PO Box 1409
Key West, FL 33040

To Whom It May Concern:

The City of Key West Tree Commission recently considered your permit application, T2020-0060 for Conceptual Landscape Plan approval with tree removal (1-Cinnamon Bark tree #3 and 1-Gumbo Limbo tree #11) for 111 Olivia Street, Key West, Florida, at their regularly scheduled meeting on March 9, 2020.

The Tree Commission approved the Conceptual Landscape Plan with Tree Removal to allow the project to proceed through the permitting process with the Planning Board. Once you have received approval from the Planning Board and HARC Commission, application should be made again to the Tree Commission for Final Landscape Plan approval with Tree Removal.

If you have any questions, please call the office at (305) 809-3768.

Sincerely,

A blue ink signature of Karen DeMaria, written in a cursive style, positioned above a horizontal line.

Karen DeMaria
Urban Forestry Manager
kdemaria@cityofkeywest-fl.gov

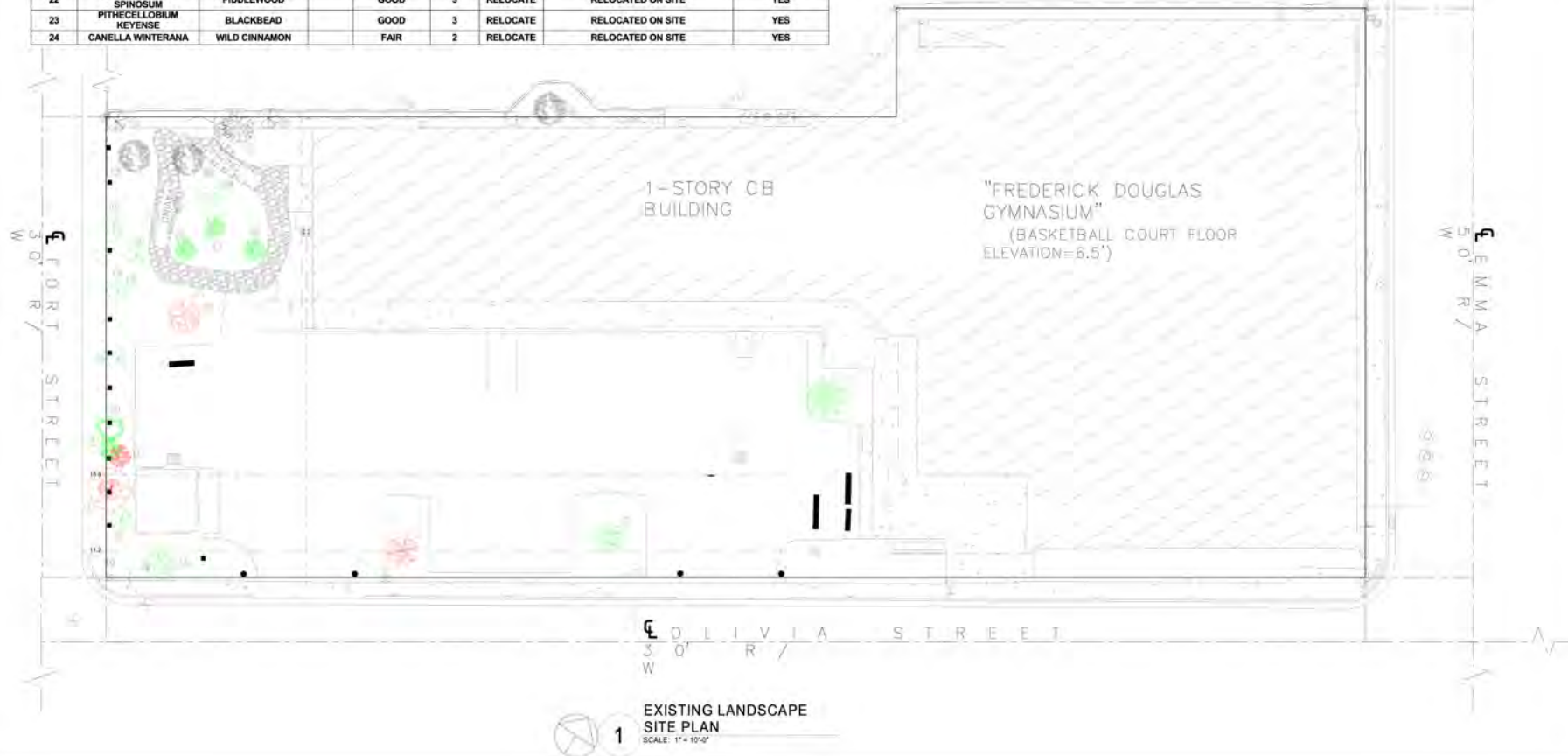
A blue ink signature of David Jackson, written in a cursive style, positioned above a horizontal line.

David Jackson
Chairman, Tree Commission

cc: Erica Poole-K2M Design

PLAN #	BOTANICAL NAME	COMMON NAME	SIZE	CONDITION	RATING	DISPOSITION	PROPOSED REPLACEMENT (AS REQUIRED)	PERMIT REQUIRED
1	TABEBUIA BAHAMENSIS	BAHAMA TABEBUIA		GOOD	3	RELOCATE	RELOCATED ON SITE	YES
1A	CLUSIA MAJOR	PITCH APPLE		GOOD	3	RELOCATE	RELOCATED ON SITE	YES
2	LYSILOMA LATISILIQUUM	WILD TAMARINO	15.2"	GOOD	3	RELOCATE	RELOCATED ON SITE	YES
3	CANELLA WINTERANA	WILD CINNAMON	6.3"	POOR	3	REMOVE	N/A	YES
4	BURSERIA SIMARUBA	GUMBO LIMBO	21.3"	GOOD	3	RELOCATE	RELOCATED ON SITE	YES
5	THRINAX RADIATA	THATCH PALM		GOOD	3	RELOCATE	RELOCATED ON SITE	YES
6	BUCIDA BUCERAS	BLACK OLIVE	3" & 4"	FAIR	3	REMOVE	N/A	NO
7	MYRCIANTHES FRAGRANS	SIMPSON STOPPER	4"	DEAD	3	REMOVE	DEAD	NO
8	EUGENIA SP	REDBERRY STOPPER		FAIR	3	RELOCATE	N/A	YES
9	SABAL PALMETTO	CABBAGE PALM PUP		GOOD	3	RELOCATE	RELOCATED ON SITE	YES
10	THRINAX RADIATA	THATCH PALM	10"	GOOD	3	RELOCATE	RELOCATED ON SITE	YES
11	BURSERIA SIMARUBA	GUMBO LIMBO	9.2"	FAIR	3	REMOVE	N/A	YES
12A	THRINAX RADIATA	THATCH PALM		GOOD	3	RELOCATE	RELOCATED ON SITE	YES
12B	SABAL PALMETTO	SABAL PALM		GOOD	3	RELOCATE	RELOCATED ON SITE	YES
13	THRINAX RADIATA	THATCH PALM		GOOD	3	RELOCATE	RELOCATED ON SITE	YES
14	DELONIX REGIA	ROYAL POINCIANA		GOOD	3	REMAIN	N/A	YES
15	THRINAX RADIATA	THATCH PALM		GOOD	3	REMAIN	N/A	YES
16	DELONIX REGIA	ROYAL POINCIANA	15"	GOOD	3	REMAIN	N/A	YES
17	BURSERIA SIMARUBA	GUMBO LIMBO		GOOD	3	REMAIN	N/A	YES
18	THRINAX RADIATA	THATCH PALM		GOOD	3	REMAIN	N/A	YES
19	PONGAM	PONGAMIA PINNATA	17"	GOOD	3	REMAIN	N/A	YES
20A	ADONIDIA MERRILLI	CHRISTMAS PALM		GOOD	1	RELOCATE	RELOCATED ON SITE	NO
20A	ADONIDIA MERRILLI	CHRISTMAS PALM		GOOD	1	RELOCATE	RELOCATED ON SITE	NO
21	LIGNUM VITAE	GUAYACAN		POOR	1	RELOCATE	RELOCATED ON SITE	YES
22	CITHAREXYLUM SPINOSUM	FIDDLEWOOD		GOOD	3	RELOCATE	RELOCATED ON SITE	YES
23	PITHECELLOBIUM KEYENSE	BLACKBEAD		GOOD	3	RELOCATE	RELOCATED ON SITE	YES
24	CANELLA WINTERANA	WILD CINNAMON		FAIR	2	RELOCATE	RELOCATED ON SITE	YES

GENERAL NOTES	
1.	ALL PLANTS TO BE # 4 TLL MINIMUM PER CODE
2.	TREES TO BE RELOCATED TO BE REMOVED WITH SPAD AND MAINTAINED WATERED DURING CONSTRUCTION
3.	COORDINATE TREE RELOCATIONS WITH SHEET L1.1.2
LEGEND	
	TREE TO BE REMOVED
	TREE TO BE RELOCATED
	TREE TO REMAIN



Existing Trees and Palms to remain :

PLAN #	BOTANICAL NAME	COMMON NAME	MINIMUM SIZE	QUANTITY	PLAN LEGEND
2	LYSIOOMA LATISQUAM	WILD TAMARIND	EXISTING	1	
4	BURSERIA SMARULBA	QUINBO LIMBO	EXISTING	1	
5	THYRSAX RADIATA	THATCH PALM	EXISTING	1	
8	Eugenia sp.	Redberry Stopper	EXISTING	1	
10	THYRSAX RADIATA	THATCH PALM	EXISTING	1	
12	THYRSAX RADIATA	THATCH PALM	EXISTING	1	
13	THYRSAX RADIATA	THATCH PALM	EXISTING	1	
14	DELOXI REGIA	ROYAL PONCIANA	EXISTING	1	
15	THYRSAX RADIATA	THATCH PALM	EXISTING	1	
16	DELOXI REGIA	ROYAL PONCIANA	EXISTING	1	
17	BURSERIA SMARULBA	QUINBO LIMBO	EXISTING	1	
18	THYRSAX RADIATA	THATCH PALM	EXISTING	1	
19	Pongamia pinnata	Pongam	existing	1	

Required Landscape Calculations for Frederick Douglas Gym, City of Key West, Florida

Notes:
This plan is only intended to represent the minimum required landscape per code for planning approval. The installed landscape may exceed all landscape requirements to enhance the community character.
Plants will be installed as shown and the overall effect is meant to replicate a naturally occurring arrangement of native trees mixed with native and other non native plantings. 100% of proposed plants are native.
3" of dressed cypress bark mulch will be installed in the required landscape areas & all required plants will be staked in accordance with Sec. 100-100/2 Key West Florida Code of Ordinances. 12" for Canopy trees and 24" for Shrubs.
All Landscape areas shall be covered by using plant material per Code and any area not indicated with plant material shall receive Zoyia Empire sod.

A total of 7 trees are scheduled to be relocated per sheet L1.1.1.

Protect existing trees and other vegetation indicated to remain in place against unnecessary cutting, leveling or moving of roots, blocking and shading of work, anchoring of trees by stockpiling construction materials or excavating materials within one (1) foot of trunk or within one (1) foot of trunk or within one (1) foot of trunk. No activity of any sort is to take place in an area fenced off as a protected area. Water, fertilizer, wash off and spray trees and other vegetation to remain within limits of contract work as required to maintain their health during the course of the Landscape Installation. Repair or replace trees and vegetation indicated to remain which are damaged by landscape operations with a tree staked on the community status only upon approval of the Landscape Architect. Landscape Contractor may be required to employ a Licensed Arborist approved by the Landscape Architect to repair damage to trees.

Relocating Trees:
If at all possible root pruning should commence at the earliest date possible. The crown may be reduced by 1/3 or as directed by the Landscape Architect. As large a rootball as is practical shall be taken and at all times the entire root pruned area shall be taken. The tree is to be placed off of Canopy if possible but in some cases Canopy will have to be taken with the rootball. The tree is to be immediately placed into its new location. Check water the tree daily for two months and every other day for another 2 months at the root system. It is recommended and may be required by the Landscape Architect to supply a mist head in the crown of the tree or to treat the tree with "Wundtonger" or other to insure successful relocation. Relocated trees are not guaranteed by the landscape contractor.

Relocating Palms:
Transplantation will be similar to that for trees except trim all but 3-4 fronds off of the palm, all fronds and flowers and in some cases the fronds will have to be tied up. The palm shall be treated with "Wundtonger" and an approved fungicide. The Landscape Architect also may require the palm to be tied up. Relocated palms are not guaranteed by the landscape contractor.

Street Frontage:
Required: 1 acre, 252 linear feet provided, 200 plant units required.
Provided: 60 plant units provided.

Provided:
2 relocated trees, 4 relocated palms = 32 Landscape Units.
15 - 12" tall m. Glycyrrhiza lucida, Columned
16 - 14" Thyrsax radiata, Key Thatch Palm.

Interior Parking lot:

Canopy Trees
Required: 600 L.F. x 8 Canopy Trees
Provided: 6 - 12" tall m. Angiosperm ferns Black Ironwood Tree

Perimeter Landscaping:

78 L.F. provided
Canopy Trees
Required: 2.17 x 1 = 2 required
Provided: 2 relocated trees

Shrubs
Required: 2.17 x 10 = 22
Provided: 22 - 24" native Shrubs will be planted
American Beautyberry - Callisaya americana
Locustberry - Syzygium lucida

Non Vehicular use areas:

Canopy Trees
Required: Less than 30% and less than 2,000 s.f. NOS. = 4 trees
Provided: 3 Relocated trees and 2 - 12" tall m. Angiosperm ferns Black Ironwood Tree

Screening:

11
Locustberry - Syzygium lucida
12 Thyrsax radiata, Key Thatch Palm.

Transplants
EXISTING TREES that Remain in Place

GENERAL NOTES

- ALL PALMS TO BE 4" TALL MINIMUM PER CODE
- TREES TO BE RELOCATED TO BE REMOVED WITH SPUD AND MAINTAINED WATERED DURING CONSTRUCTION

GRAVEL AREA: TBD BY PUBLIC WORKS + 3.625 SQ FT

LEGEND

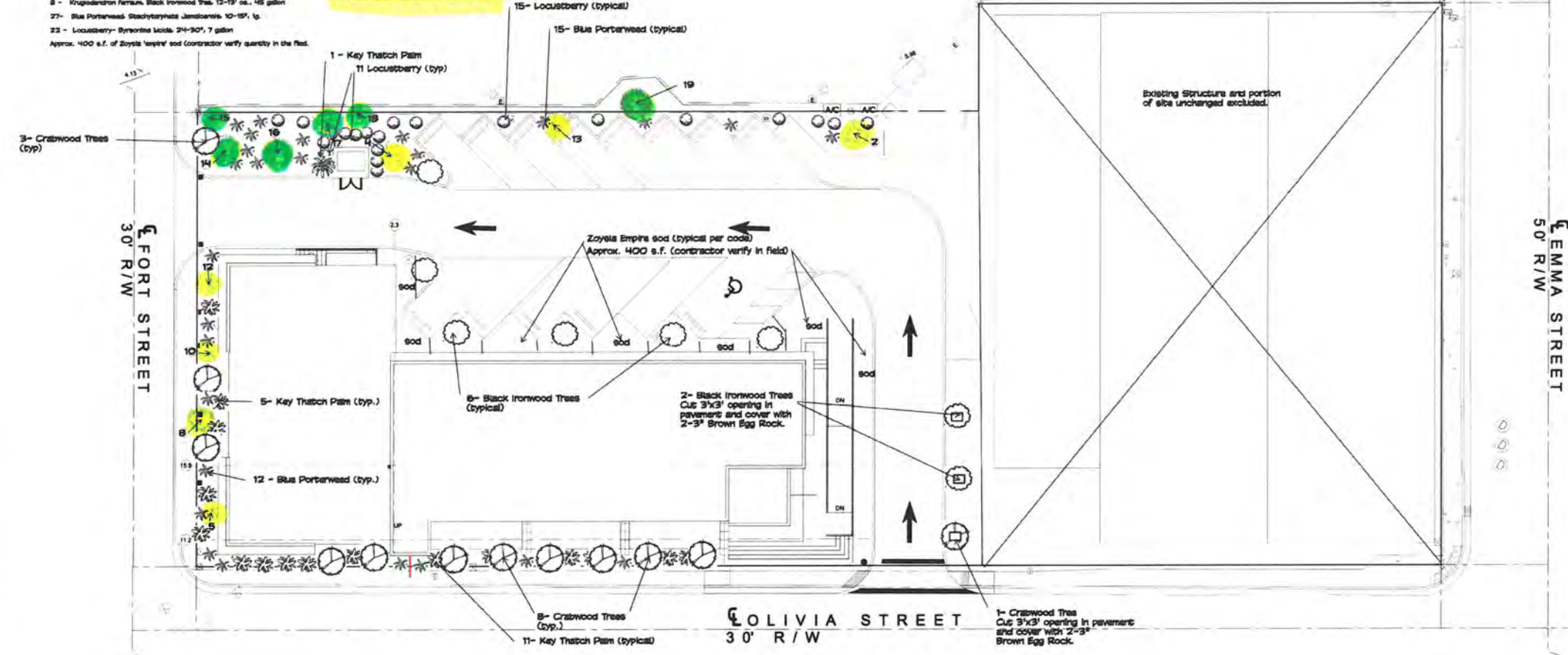


Required Landscape Plant List for Frederick Douglas Gym, City of Key West, Florida

- 13 - Glycyrrhiza lucida, Crinum 12-13" dia., 45 gallon
17 - Thyrsax radiata, Key Thatch Palm, 9" dia., 45 gallon
8 - Knigiolandron ferns, Black Ironwood Tree 12-13" dia., 45 gallon
27 - Blue Porterweed, Stachytarpheta jamaicensis 10-15", 1g.
22 - Locustberry - Syzygium lucida 24-30", 7 gallon
Approx. 400 s.f. of Zoyia Empire sod and Contractor verify quantity in the field.

Existing Trees and Palms to relocate:

Trees to be Transplanted to Port Street Parking lot:
As shown on sheet L1.1.1. Final location per LA or Urban Forestry Manager
1 - Banana (Banana Coccoth)
14 - Pinch Apple (pins to large and messy)
16 - Small cactus (out of character for design)
20 - ABB - Christmas Palm (messy species)
21 - Lycopodium (out of character for design)
22 - Redwood (out of character for design)
23 - Redwood (out of character for design)
24 - M6 Christmas (out of character for design)



REQUIRED LANDSCAPE PLAN

SCALE: 3/32" = 1'-0"

K2M
Architecture, Engineering
Interior Design
Asset Management
Specialty Consulting
Key Largo, Florida
Key West, Florida
Marathon, Florida
URL: www.k2mgroup.com
P.O. BOX 100000
Building Relationships
Based on Trust and Respect
Dedicated | Collaborative | Innovative | Efficient
Team | Customer | Quality | Service | Satisfaction

DDAI
DAVID DOUGLAS
ASSOCIATES, INC.
A Subsidiary of K2M
111 OLIVIA STREET, KEY WEST, FL 33040
TEL: 305.852.1111
WWW.DDAI.COM

Butting
Engineers
LLC
111 OLIVIA STREET, KEY WEST, FL 33040
TEL: 305.852.1111
WWW.BUTTINGENGINEERS.COM

BROWN & GREEN
LANDSCAPE ARCHITECTURE
LLC
111 OLIVIA STREET, KEY WEST, FL 33040
TEL: 305.852.1111
WWW.BROWNANDGREEN.COM

Submittal	Reviewed	Approved
11/15/2019	11/15/2019	11/15/2019

FREDERICK DOUGLASS GYM
111 OLIVIA STREET, KEY WEST, FL 33040
CITY OF KEY WEST
1300 WHITE STREET, KEY WEST, FL 33040

PLOTTED:
2/20/2020 2:01:51 PM
Drawing Size: 30x42 Project #: 18098
Drawn By: Rich
Checked By:
Title:
Required Landscape Plan

Sheet Number:
L1.1.2

Date: 12/24/2019
Scale: 3/32" = 1'-0"